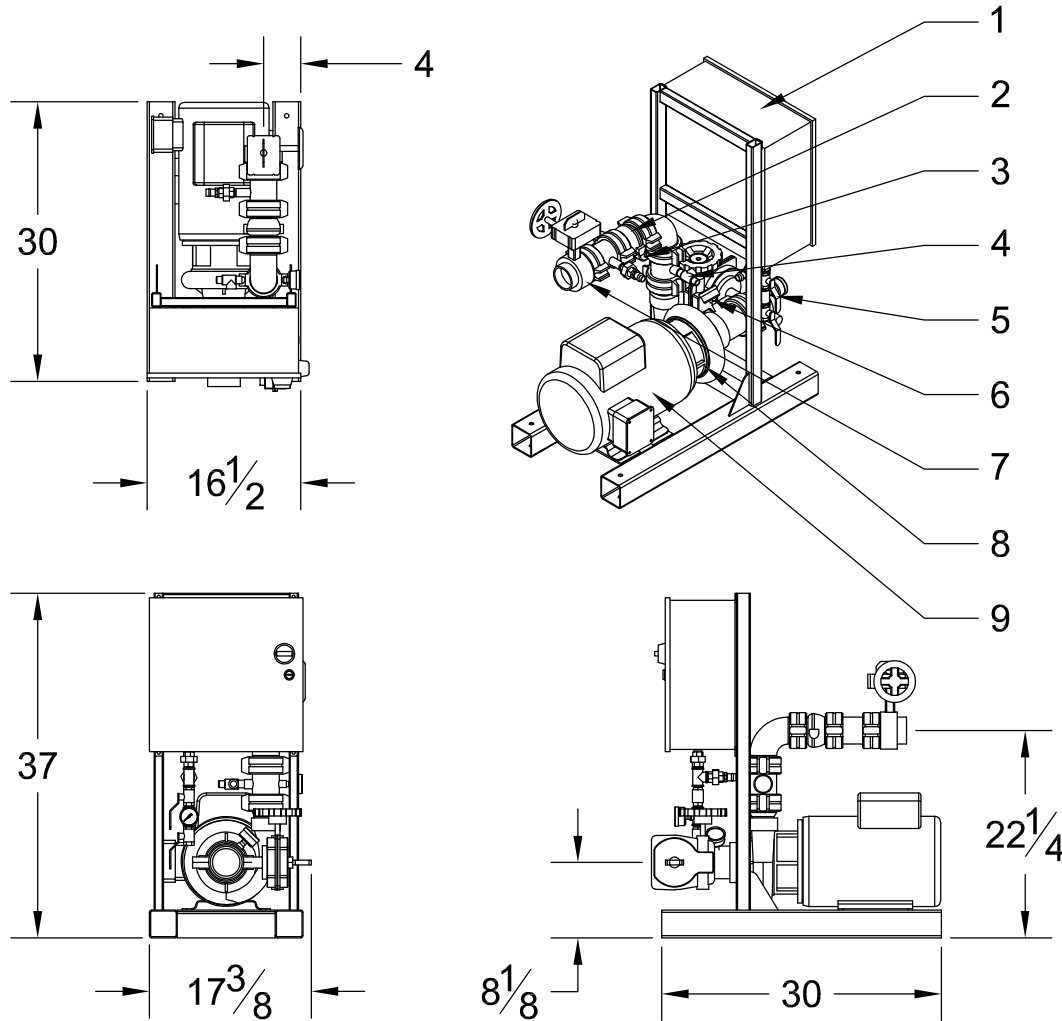


## Residential Packaged Fire Pump System

# HDR-150

Heavy Duty Residential Package  
 Design Condition: 150GPM @ 65PSI



### System Specifications:

**Motor**  
 -10 Horsepower Electric  
 -230 Volt  
 -46 Amp  
 -Single Phase  
 -3450 RPM

**Pump**  
 -End Suction Centrifugal Pump  
 -3" Suction (Grooved)  
 -2 1/2" Discharge (Grooved)  
 -175 PSI max working pressure

**System Components**  
 -1- Residential Fire Pump Controller  
 -2- Check Valve  
 -3- Discharge Pressure Gauge  
 -4- Case Relief Valve  
 -5- Suction Monitored Butterfly Valve  
 -6- Suction Pressure Gauge  
 -7- Discharge Monitored Butterfly Valve  
 -8- End Suction Pump  
 -9- Electric Motor  
 -Not Shown- Copper Sensing Line (per NFPA20)

### Performance

Performance values based on multiple pump tests. Not for certification purposes.

GPM	0	60	90	110	150	180	200	225
PSI	72	72	71	70	67	64	62	57

Please Note: This fire pump system uses an unlisted pump & a residential controller. Please submit to your AHJ for approval prior to ordering.