



TALCO **FIRE
SYSTEMS**

Portland, OR
(503) 688-1231 / (503) 688-1234(FAX)

HDR-75

75GPM Fire Pump Package

Submittal Packet

Residential Packaged Fire Pump System

HDR-75

Heavy Duty Residential Package
Design Condition: 75GPM @ 65PSI

System Specifications:

Motor

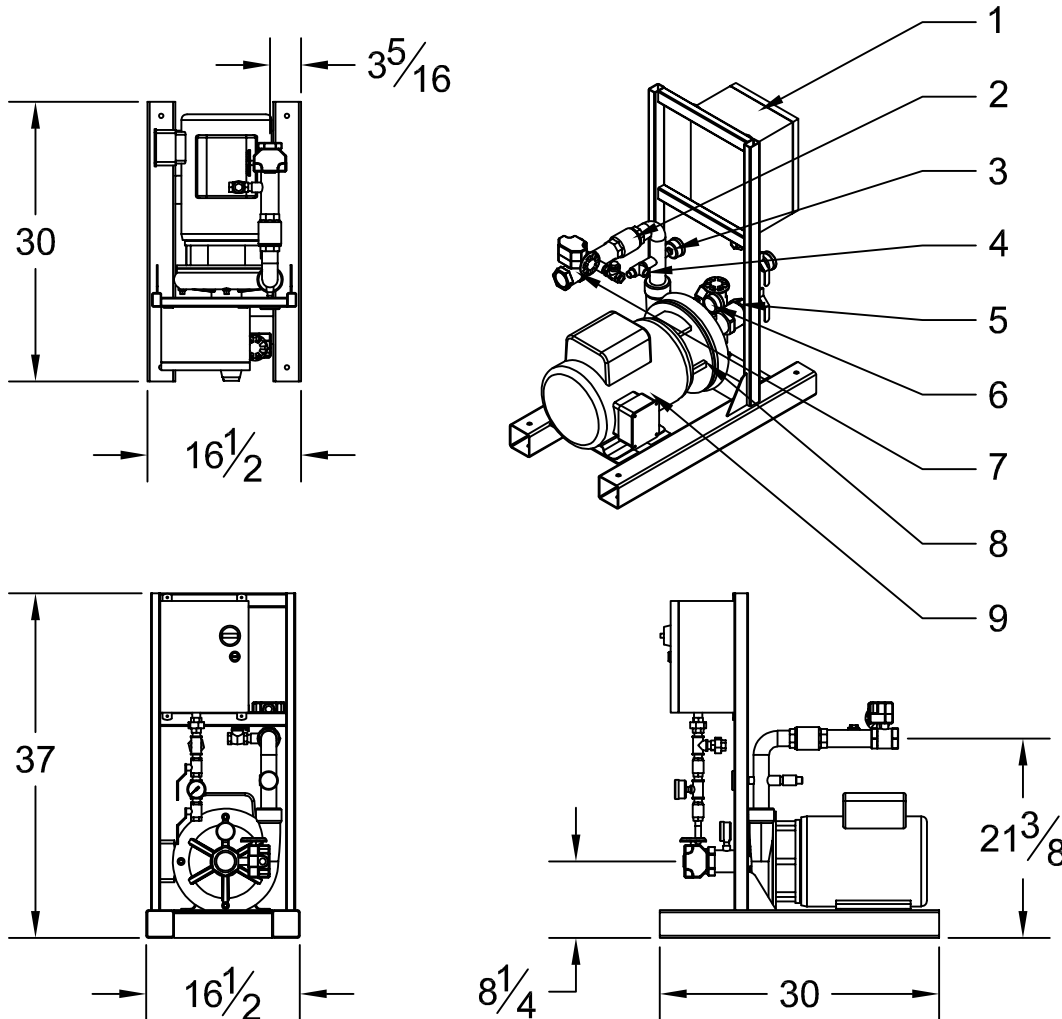
- 7.5 Horsepower Electric
- 230 Volt
- 37 Amp
- Single Phase
- 3450 RPM

Pump

- End Suction Centrifugal Pump
- 2" Suction (NPT)
- 1 1/2" Discharge (NPT)
- 175 PSI max working pressure

System Components

- 1- Residential Fire Pump Controller
- 2- Check Valve
- 3- Discharge Pressure Gauge
- 4- Case Relief Valve
- 5- Suction Monitored Butterfly Valve
- 6- Suction Pressure Gauge
- 7- Discharge Monitored Butterfly Valve
- 8- End Suction Pump
- 9- Electric Motor
- Not Shown- Copper Sensing Line (per NFPA20)



Performance

Performance values based on multiple pump tests. Not for certification purposes.

GPM	0	65	75	85	95	105	115	125
PSI	73	67	65	62	59	55	53	50

Please Note: This fire pump system uses an unlisted pump & a residential controller. Please submit to your AHJ for approval prior to ordering.

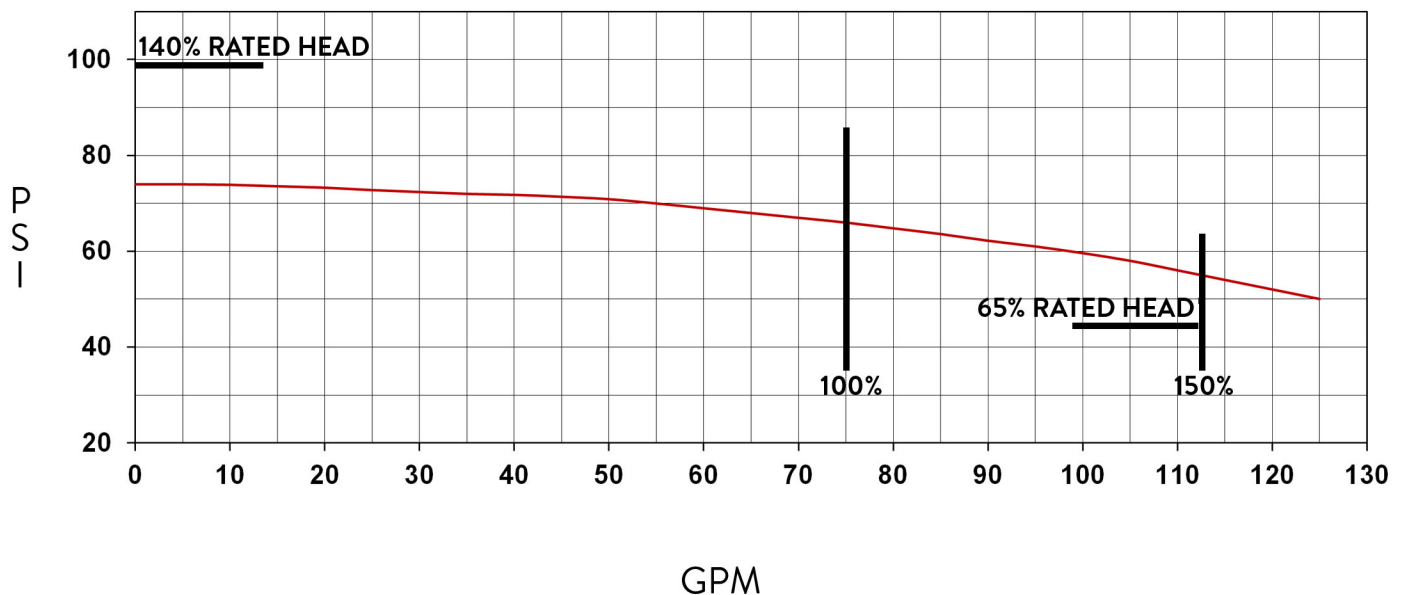


TALCO FIRE SYSTEMS

HDR-75

PUMP DATA

75GPM @ 70PSI



SYSTEM SPECIFICATIONS

MOTOR

- 7.5 HP ELECTRIC MOTOR
- 230 VOLT, 37 AMP
- SINGLE PHASE
- 3450 RPM
- JM FRAME
- SHAFT SLEEVE/O-RING FOR PROTECTION AGAINST SHAFT DAMAGE
- SEALED MOTOR BEARINGS TO CARRY AXIAL & THRUST LOADS
- OPEN DRIP PROOF (ODP)

PUMP

- HIGH PRESSURE CAST IRON VOLUTE
- MACHINED BRONZE IMPELLER
- 2" SUCTION
- 1 1/2" DISCHARGE
- 150 PSI MAX WORKING PRESSURE



TORNATECH

Project: _____

Customer: _____

Engineer: _____

Pump Manufacturer: _____

Technical Data Submittal Document

Model JPLT

Across the Line Start
Jockey Pump Controller

Contents:

Data Sheets

Dimensional Data

Wiring Schematics

Field Connections

Note: The drawings included in this package are for controllers covered under our standard offering. Actual AS BUILT drawings may differ from what is shown in this package.



N.Y.C.
APPROVED

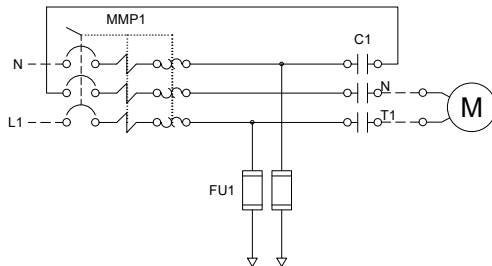


July 2024

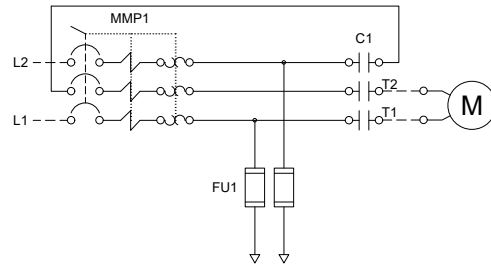


Select Incoming Voltage

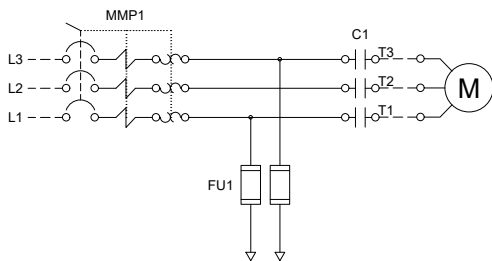
110-120V



200-240V



200-600V



N.Y.C.
APPROVED



Listing	Underwriters Laboratory (UL)	UL508A - Industrial Pump Controllers
	New York City	Accepted for use in the City of New York by the Department of Buildings
	Optional	
	CE Mark	Various EN, IEC & CEE directives and standards
Enclosure	Protection Rating Standard: NEMA 2 Optional NEMA 12 NEMA 4X-304 sst painted NEMA 3 NEMA 4X-304 sst brushed finish NEMA 3R NEMA 4X-316 sst painted NEMA 4 NEMA 4X-316 sst brushed finish	
	Accessories • Wall mounting lugs (x4)	Paint Specifications • Red RAL3002 • Powder coating • Glossy textured finish



Short circuit current rating

	Voltage						
	Single Phase		Three Phase				
HP	110 - 120V	200 - 240V	200 - 208V	220 - 240V	380 - 415V	440 - 480V	600V
0.25	65kA	65kA	65kA	65kA	65kA	65kA	10kA
0.5	65kA	65kA	65kA	65kA	65kA	65kA	10kA
0.75	42kA	65kA	65kA	65kA	65kA	65kA	10kA
1	42kA	65kA	65kA	65kA	65kA	65kA	10kA
1.5	42kA	65kA	65kA	65kA	65kA	65kA	10kA
2	42kA	65kA	65kA	65kA	65kA	65kA	10kA
3	CF	42kA	65kA	65kA	65kA	65kA	10kA
4	CF	42kA	42kA	42kA	65kA	65kA	10kA
5	CF	42kA	42kA	42kA	65kA	65kA	10kA
5.5	CF	CF	42kA	42kA	65kA	65kA	10kA
7.5	CF	CF	42kA	42kA	42kA	65kA	10kA
10	CF	CF	CF	42kA	42kA	42kA	10kA
15	CF	CF	CF	CF	42kA	42kA	5kA
20	CF	CF	CF	CF	CF	42kA	5kA
25	CF	CF	CF	CF	CF	CF	5kA



Fuseless Motor Starter	<ul style="list-style-type: none"> • Type -F fuse-less magnetic motor starter • Rotary handle, padlockable • Door interlocked 		
Control Circuit	<ul style="list-style-type: none"> • 24V.AC 		
ViZiLT Operator Interface	<ul style="list-style-type: none"> • High luminosity alphanumeric digital display • HAND-OFF-AUTO pushbuttons • MENU navigation pushbuttons 		
Pressure Sensing	<ul style="list-style-type: none"> • Pressure transducer for fresh water application 316 stainless steel construction • Rated for 0-600psi working pressure • Pressure sensing line connection 1/2" brass Male NPT 		
Visual Indications	<ul style="list-style-type: none"> • H-O-A position • System pressure • Cut-out and Cut-In pressure setting • Manual motor run • Automatic motor run • Motor overload (occured) • Pump start counter • Elapsed time meter (hours / non-resettable) 		
Timers	<ul style="list-style-type: none"> • Minimum run timer (off delay) • Delay start timer (on delay) • Visual countdown 		
Counters	<ul style="list-style-type: none"> • Pump start counter • Elapsed timer meter (hours / non-resettable) 		
Operators	<ul style="list-style-type: none"> • Main disconnect handle • HAND-OFF-AUTO pushbuttons • MENU navigation pushbuttons 		
Operation	Automatic Start	Start on pressure drop	
	Manual Start	Start pushbutton	
	Stopping	Stop pushbutton	
	Timers	Field adjustable & visual countdown	<ul style="list-style-type: none"> • Minimum run timer (off delay) • Delay start timer (on delay)

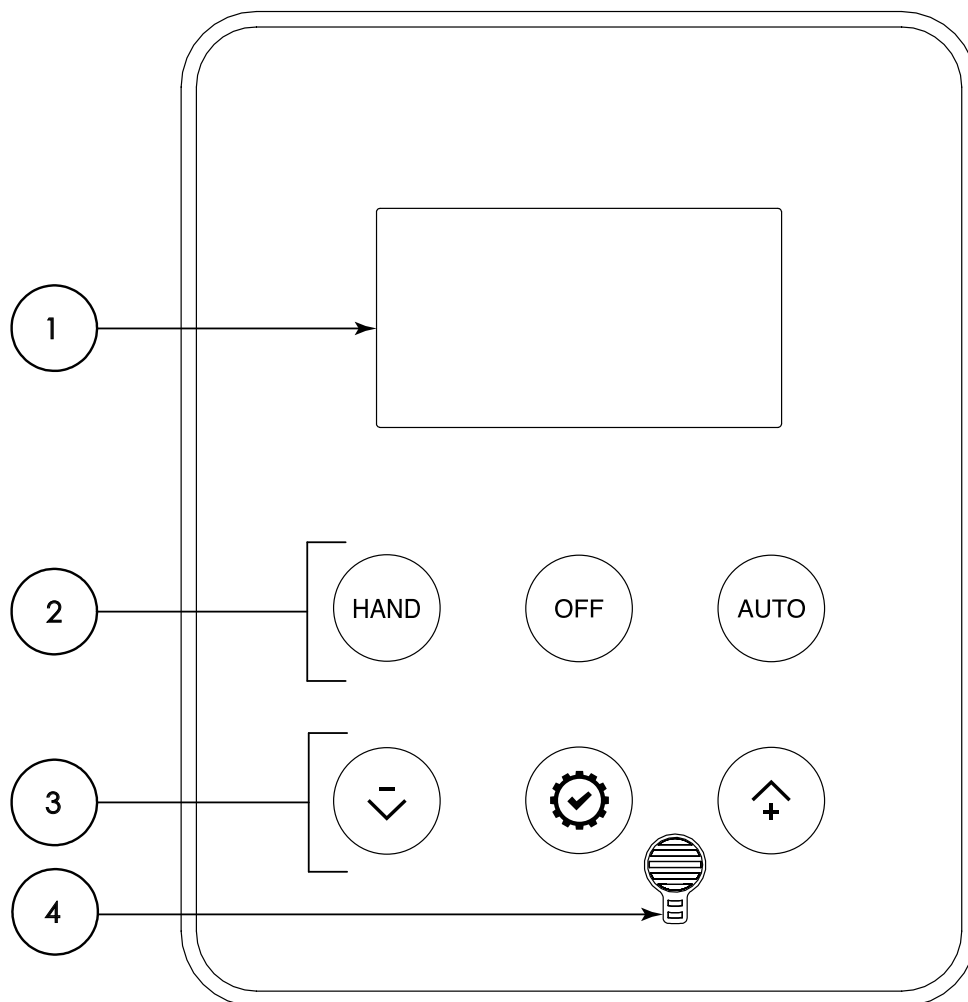


A5	Motor run alarm contact
A6	Loss of power alarm contact
A7	Overload or short circuit alarm contact
D11D	Pressure transducer 0-600psi with ½" MNPT 316 stainless steel bushing
D13A	Externally mounted wetted parts
D18	Audible alarm
D19	Anti-condensation heater and thermostat
D20	Anti-condensation heater and humidistat
D21	Tropicalization
D22	Phase reversal / failure pilot light and alarm contact
D23	Controller power healthy pilot light and alarm contact
D24	Pump failure via current sensing relay with pilot light and dry alarm contact
D25	Low zone pump control function
D26	Mid zone pump control function
D27	High zone pump control function
D28	Controller in AUTO alarm contacts
D29	Controller not in AUTO alarm contacts
D30	Motor heater circuit
D35	Seismic Certification compliant to CBC 2019, IBC 2018 rigid base/wall mounted only
D36	Special Seismic Certification compliant to OSHPD rigid base/wall mounted only
D37	100kA high short circuit withstand rating for 200V to 600V

L01	Other language and English (bilingual)
L02	French
L03	Spanish
L04	German
L05	Italian
L06	Polish
L07	Romanian
L08	Hungarian
L09	Slovakian
L10	Croatian
L11	Czech
L12	Portuguese
L13	Dutch
L15	Turkish
L16	Swedish
L21	Danish
L28	Finnish
L29	Norwegian

Note: Options chosen from this page are not electrically represented on the wiring schematics in this submittal package.

ViZiLT Operator Interface



- 1 - High luminosity alphanumeric digital display
- 2 - HAND-OFF-AUTO pushbuttons
- 3 - MENU navigation pushbuttons
- 4 - Audible Alarm



TORNATECH

© Tornatech, Inc. Not for construction.
Subject to change without notice.

BY DD/MM/YY

DRAWN BY ACD 15/05/23

FINAL APPROVAL FC 15/05/23

JOCKEY PUMP CONTROLLER

MODEL: JPLT

BUILT TO THE LATEST EDITION OF THE UL 508A



NYC
Dpt of Building
Approved

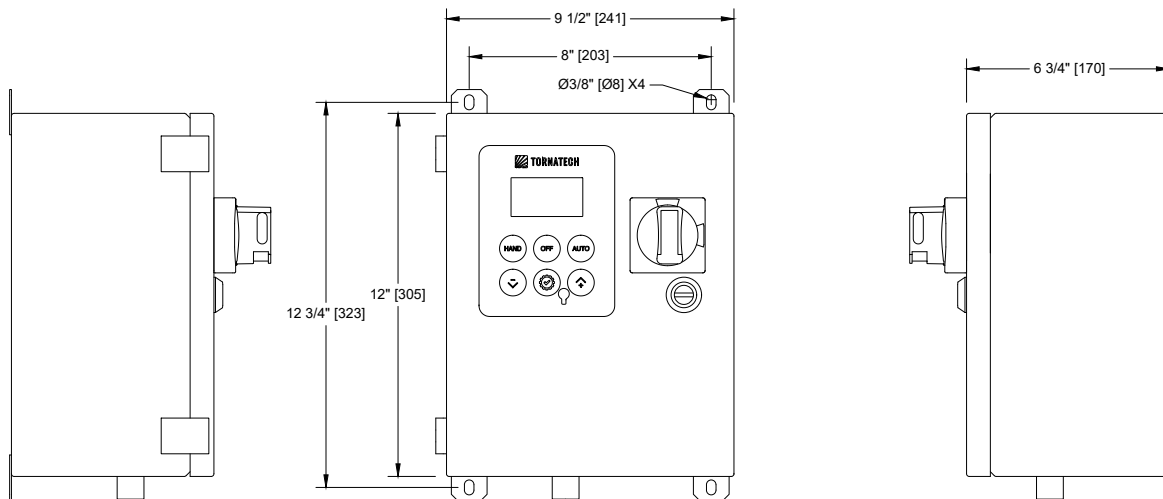


THIRD ANGLE
PROJECTION

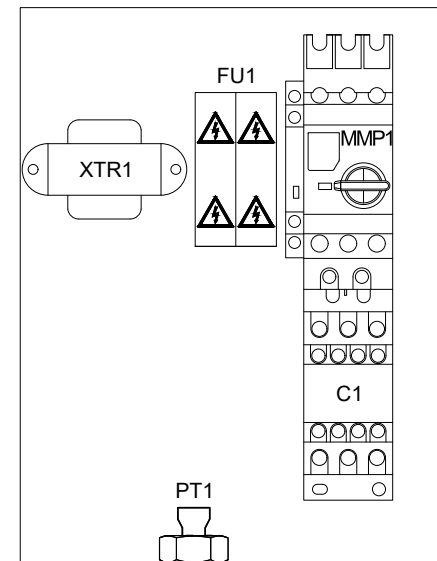
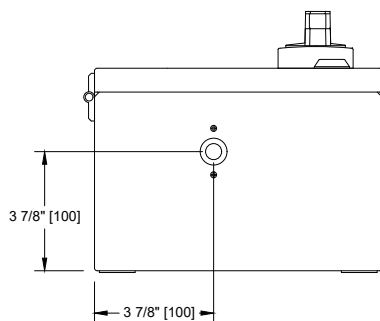
DRAWING NUMBER
JPLT-DI001/E

DWG REV. 0

SHEET 1 OF 1



Sensing Line Connection 1/2 " M.NPT



Standard Internal Layout

Voltage / Power Table

Voltage	Max HP
1 Phase	
110 - 120	2
200 - 208	5
220 - 240	5
3 Phases	
200 - 208	7.5
220 - 240	10
380 - 400 - 415	15
440 - 480	20
600	25

Notes:

- Standard NEMA: NEMA 2
- Standard Paint: Textured Red RAL 3002.
- All Dimensions are in Inches [Millimeters]
- Use Watertight Conduit and Connector Only.
- Protect Equipment Against Drilling Chips.
- Door Swing Equal to Door Width

Drawing for information only.

Manufacturer reserves the right to modify this drawing without notice.

Contact manufacturer for "As Built" drawing.

*Dimensions may change depending on option required. Consult Factory for exact dimensions.



TORNATECH

© Tornatech, Inc. Not for construction.
Subject to change without notice.

BY DD/MM/YY

DRAWN BY ACD 15/05/23

FINAL APPROVAL FC 15/05/23

JOCKEY PUMP CONTROLLER ACROSS THE LINE / 1 PHASE

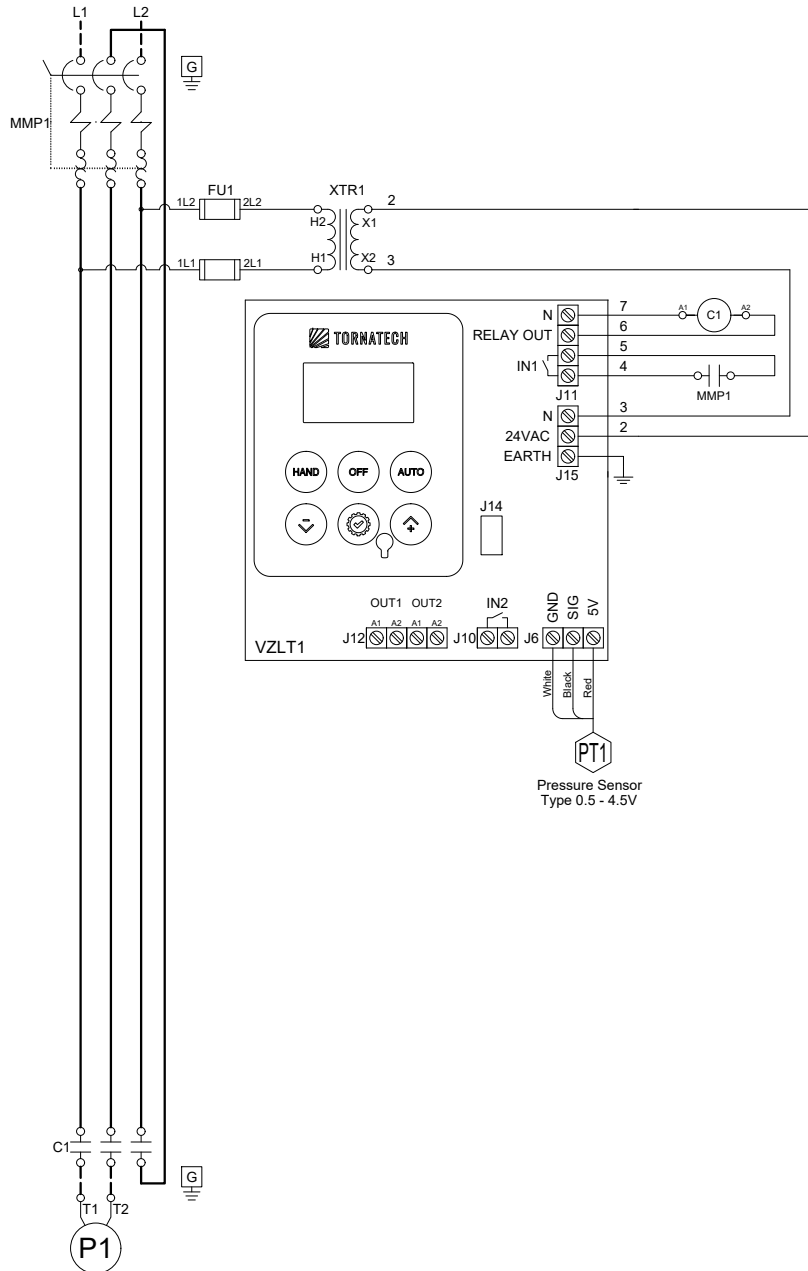
MODEL: JPLT

BUILT TO THE LATEST EDITION OF THE UL 508A



NYC
Dpt of Building
Approved

DRAWING NUMBER
JPLT-WS002/E
DWG REV. 0
SHEET 1 OF 1





TORNATECH

© Tornatech, Inc. Not for construction.
Subject to change without notice.

BY DD/MM/YY

DRAWN BY ACD 15/05/23

FINAL APPROVAL FC 15/05/23

JOCKEY PUMP CONTROLLER ACROSS THE LINE / 1 PHASE

MODEL: JPLT

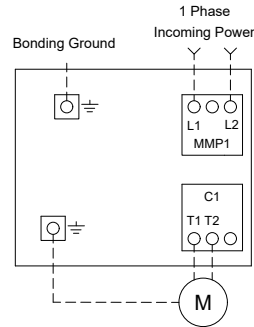
BUILT TO THE LATEST EDITION OF THE UL 508A



NYC
Dpt of Building
Approved

DRAWING NUMBER
JPLT-TD002/E
DWG REV. 0
SHEET 1 OF 1

Power Connections and Motor Connections



Line Terminals (L1,L2,GND)

Maximum Motor Horsepower		Wire Size Copper Only	Torque	Wire Size Ground Copper Only
200-208V	220-240V			
5HP	5HP	#14 AWG - #8 AWG	2.5 Nm	#14 AWG - #2 AWG

Motor Terminals (T1,T2,GND)

Maximum Motor Horsepower		Wire Size Copper Only	Torque	Wire Size Ground Copper Only
200-208V	220-240V			
1.5HP	1.5HP	#14 AWG - #10 AWG	1.7 Nm	#14 AWG - #2 AWG
5HP	5HP	#14 AWG - #8 AWG	2.5 Nm	#12 AWG - #2 AWG

TrimFit® Bronze Butterfly Valve

INSIST ON
F P P I®

Installation Instructions

Description

TrimFit® Model BFT (Threaded Butterfly Valve) and Model BFG (Grooved Butterfly Valve) close slowly to prevent water hammer. The butterfly valves are designed to be installed in any orientation and monitored to signal if the valve is opened or closed. They are Listed and Approved for use in a fire sprinkler system.



Installation

1. The valve can be installed in any orientation in a piping system with standard ASME B1.20.1 NPT or standard roll or cut grooved pipe.
2. When threading to pipe, apply PipeFit® or equivalent thread sealant or tape.
3. Use a wrench to cramp on the hexagon end of the valve.
4. The tamper switch features two switches: Switch-1 has dual leads on the terminals. This switch is used for connection of the supervisory circuit of a listed fire alarm control panel. Switch-2 has a single lead. This switch is used for connection of auxiliary equipment.
5. All the unused wires need to be capped with lead nuts and tucked into a junction box.
6. All connections need to be reviewed and approved by the appropriate jurisdictional authorities.

7. A No. 14 green wire is fixed inside the switch housing. It is provided as a ground for the housing.
8. The valves are intended for use with ANSI B36.10 Schedule 40 and/or Schedule 80 pipes, sizes 1", 1-1/4", 1-1/2", 2" and 2-1/2".

NOTE: ALL REPLACEMENT PARTS MUST BE OBTAINED FROM THE MANUFACTURER TO ASSURE PROPER OPERATION OF THE VALVE, AND TO MAINTAIN APPROVAL OF THE DEVICE.

The information contained herein is produced in good faith and is believed to be reliable but is provided for guidance and information purposes only. FPPI and its agents cannot assume liability or responsibility for results obtained in the use or misuse of its product by persons whose methods and qualifications are outside and beyond our control. It is the user's responsibility to determine the suitability of, methods of use, preparation prior to use, and appropriate installation for all products purchased from FPPI. It is the user's sole responsibility to observe and adapt such precautions as may be advisable or necessary for the protection of personnel and property in the handling and use of any of our products.

Specifications

Rated to 300 PSI

Switch rating:

10.1Amps/125/250VAC-60Hz

Actual switch application rating:

10 Amps/115 VAC-60Hz

0.5 Amps/28 VDC

Indoor/Outdoor Use

Materials

Body: Bronze ASTM 584
C83600

Disc: SS304

Handwheel: ASTM A216 WCB

Seat: ASTM D2000 Viton

Indicator: Powder Metal

Housing/Cover: Forged Brass
JIS C3771 (Ref. ASTM C37700)

Available Sizes

TrimFit® Model BFT (Threaded)

06-500-00 1" UL/FM

06-502-00 1 1/4" UL/ULc/FM

06-504-00 1 1/2" UL/ULc/FM

06-506-00 2" UL/ULc/FM

06-508-00 2 1/2" UL/ULc/FM

TrimFit® Model BFG (Grooved)

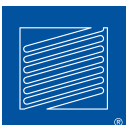
06-522-00 1 1/4" UL/ULc/FM

06-524-00 1 1/2" UL/ULc/FM

06-526-00 2" UL/ULc/FM

06-528-00 2 1/2" UL/ULc/FM

CA Bldg. Materials Listing #
7770-2164-0100



3198 LIONSHEAD AVE
CARLSBAD, CA 92010
+ 1 (760) 599-1168
+ 1 (800) 344-1822
+ 1 (800) 344-3775 FAX

© 2016 Fire Protection Products, Inc.

WWW.FPPI.COM





Check Valve – 500 SB Series Certified Lead Free*

- Silicon bronze cast body
- Silicon bronze cast poppet
- Female Threads
- Check Valves: 1/2" – 2" are VFD Compatible

*Certified Lead Free to NSF/ANSI 372 and NSF/ANSI 61. Meets all State and Federal safe water drinking acts including California Prop 65.

All check valves furnished with Buna-N O-Ring, stainless steel spring, stainless steel washer and stainless steel locknut.

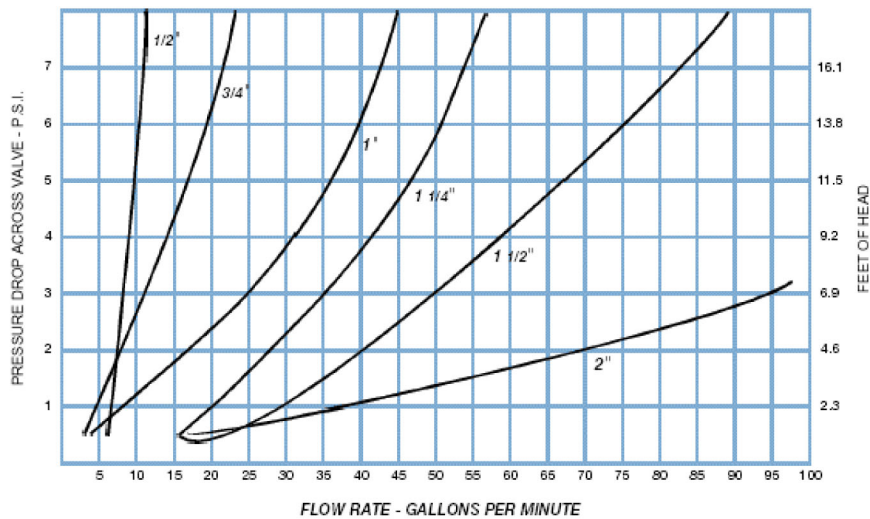
Made In U.S.A

Certified Lead Free



NSF/ANSI 372

3rd Party Certified Truesdail
Laboratories



Simmons Manufacturing
P.O. Box 1509
McDonough, GA. 30253
1608 Highway 20 East
McDonough, GA. 30252
USA

Call our Live Support Team!
(800) 241-1935

Quality Assurance is Top Priority at
Simmons.

For Commercial, Institutional and Industrial Applications

Job Name _____
 Job Location _____
 Engineer _____
 Approval _____

Contractor _____
 Approval _____
 Contractor's P.O. No. _____
 Representative _____

Series 530C Calibrated Pressure Relief Valves

Sizes: 1/2" or 3/4" (15 or 20mm)

Series 530C Calibrated Pressure Relief Valves are spring operated brass valves designed for use only as protection from the build up of excessive pressure in systems containing water, oil or air. Series 530C valves incorporate a calibrated adjustment feature for setting the valve to the relief pressure required. These valves are ideally suited for bypass thermal expansion relief.

Features

- Calibrated adjustment feature for setting valve to relief pressure required
- Adjustable range 50 – 175psi (3.4 – 12.1 bar)
- All brass construction
- All stainless steel spring
- Buna-N disc on machined body seat
- Inlet (bottom), male NPT threaded
- Outlet (side), female NPT threaded

Pressure – Temperature

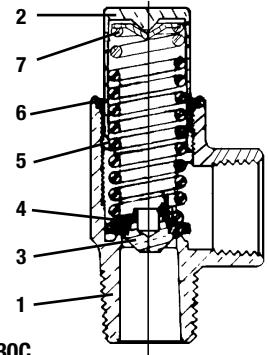
Maximum Temperature: 180°F (82°C)

Spring Ranges

1/2" or 3/4" (15 or 20mm): 50 – 175psi (3.4 – 12.1 bar)
 3/4" (20mm): 100 – 300psi (6.9 – 20.7 bar)

Application Note: The Watts Series 530C are not ASME approved safety relief valves and should not be used in system application with this requirement.

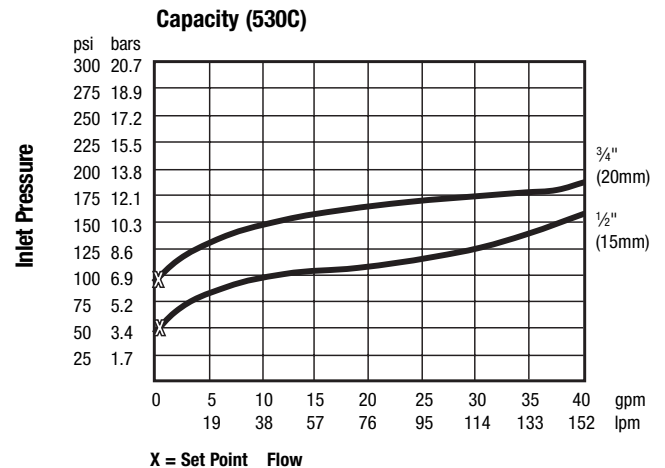
MODEL	SIZE (DN)		DIMENSIONS				WEIGHT	
	in.	mm	Height		Width		lbs.	kg.
530C	1/2 or 3/4	15 or 20	3	76	1 1/2	41	.37	0.17



Model 530C

Materials

- | | |
|----------------------|------------------|
| 1. Body | Brass |
| 2. Bonnet | Brass |
| 3. Disc Holder | Brass |
| 4. Disc | Buna-N (Nitrile) |
| 5. Adjustable Spring | Stainless Steel |
| 6. O-ring | Buna-N (Nitrile) |
| 7. Spring Washer | Brass |



Watts product specifications in U.S. customary units and metric are approximate and are provided for reference only. For precise measurements, please contact Watts Technical Service. Watts reserves the right to change or modify product design, construction, specifications, or materials without prior notice and without incurring any obligation to make such changes and modifications on Watts products previously or subsequently sold.



Water Safety & Flow Control Products

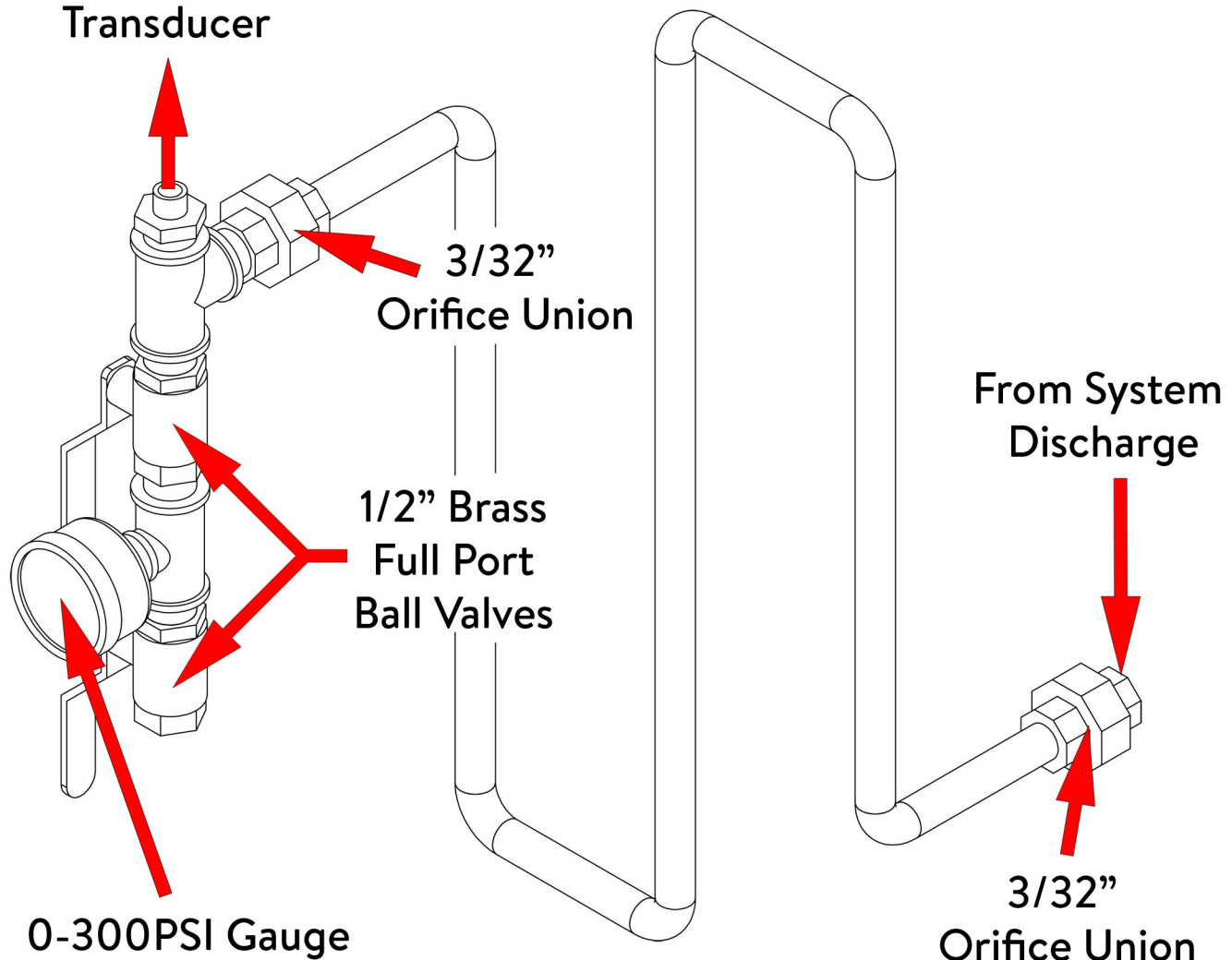
USA: 815 Chestnut St., No. Andover, MA 01845-6098; www.watts.com
 Canada: 5435 North Service Rd., Burlington, ONT. L7L 5H7; www.wattscanada.ca



TALCO FIRE SYSTEMS

NFPA-20 Pressure Sensing Line Detail

To Control Panel
Pressure Switch/
Transducer



Sensing line constructed in accordance with NFPA-20:
5 feet minimum 1/2" hard copper tubing
Brass or copper NPT components