



13-ULV50-R

2 x 2 - 9C

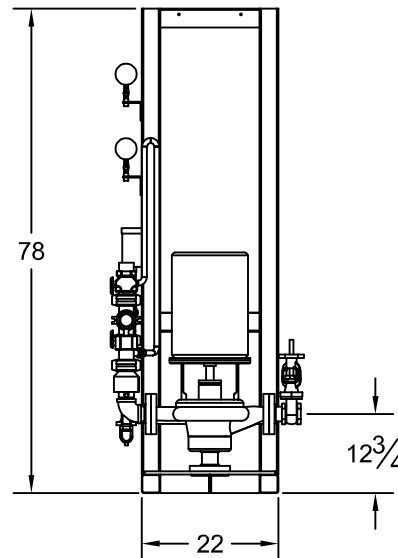
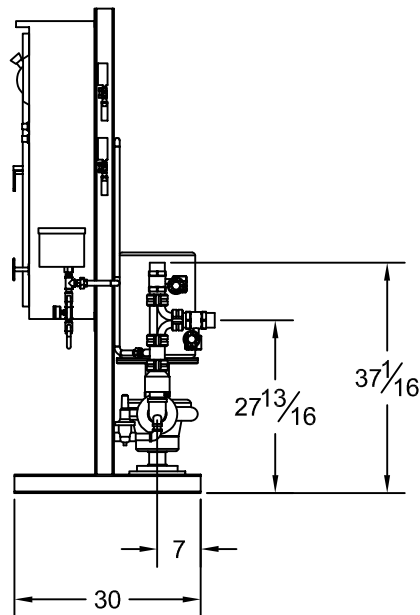
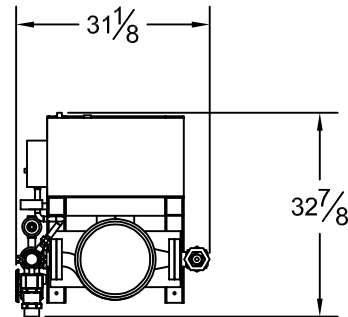
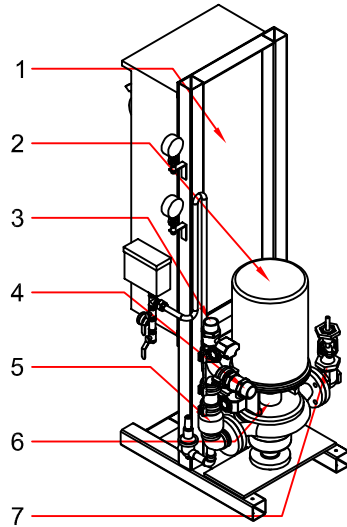
50GPM UL Fire Pump System

NFPA-20 Submittal Packet

NFPA13R Packaged Fire Pump System UL/FM Fire Pump

13-ULV50-R

Compact Residential Package
Design Condition: 50GPM @ 85PSI



System Specifications:

Motor

- 10 Horsepower Electric
- 230 Volt, 46 Amp
- Single Phase
- 3450 RPM

Pump

- UL/FM Vertical Inline Fire Pump
- 2" Suction (FNPT)
- 2" Discharge (Grooved)
- 175 PSI max working pressure

System Components (UL Listed by Manufacturer)

- 1- Limited Service Fire Pump Controller
- 2- Electric Motor (UL Recognized)
- 3- Discharge Butterfly Valve (Monitored)
- 4- Test Connection Butterfly Valve (Monitored)
- 5- Check Valve
- 6- Vertical Inline Fire Pump
- 7- Suction OS&Y (Monitored)

Dimensions

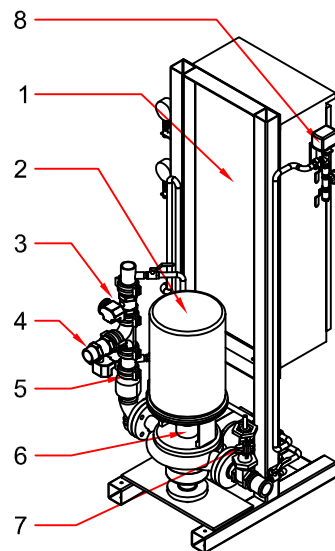
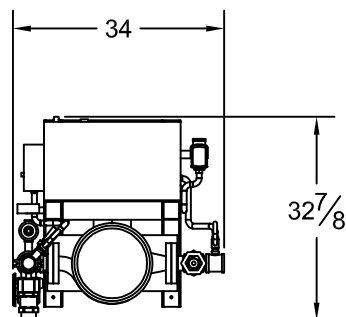
- 33" Depth
- 78" Height
- 32" Width

*All dimensions are approximate and subject to change without notice.

NFPA13R Packaged Fire Pump System UL/FM Fire Pump with Jockey Pump

13-ULV50

Compact Residential Package
Design Condition: 50GPM @ 85PSI



System Specifications:

Motor
-10 Horsepower Electric
-230 Volt, 46 Amp
-Single Phase
-3450 RPM

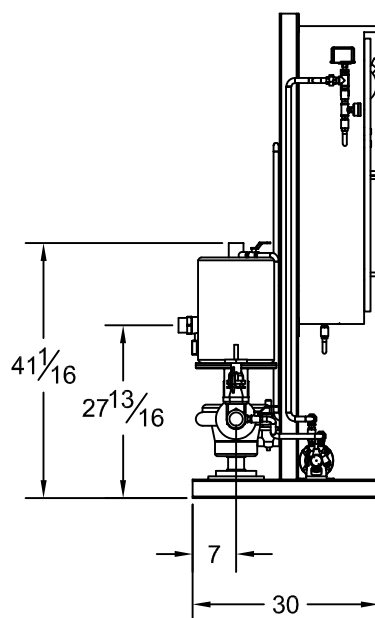
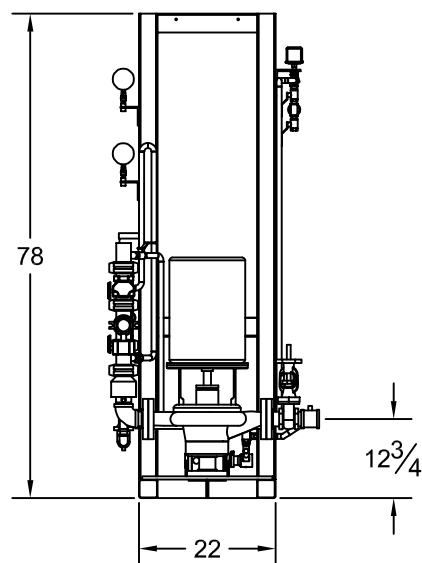
Pump
-UL/FM Vertical Inline Fire Pump
-2" Suction (FNPT)
-2" Discharge (Grooved)
-175 PSI max working pressure

System Components (UL Listed by Manufacturer)

- 1- Limited Service Fire Pump Controller
- 2- Electric Motor (UL Recognized)
- 3- Discharge Butterfly Valve (Monitored)
- 4- Test Connection Butterfly Valve (Monitored)
- 5- Check Valve
- 6- Vertical Inline Fire Pump
- 7- Suction OS&Y (Monitored)
- 8- Pressure Switch (Jockey Control)

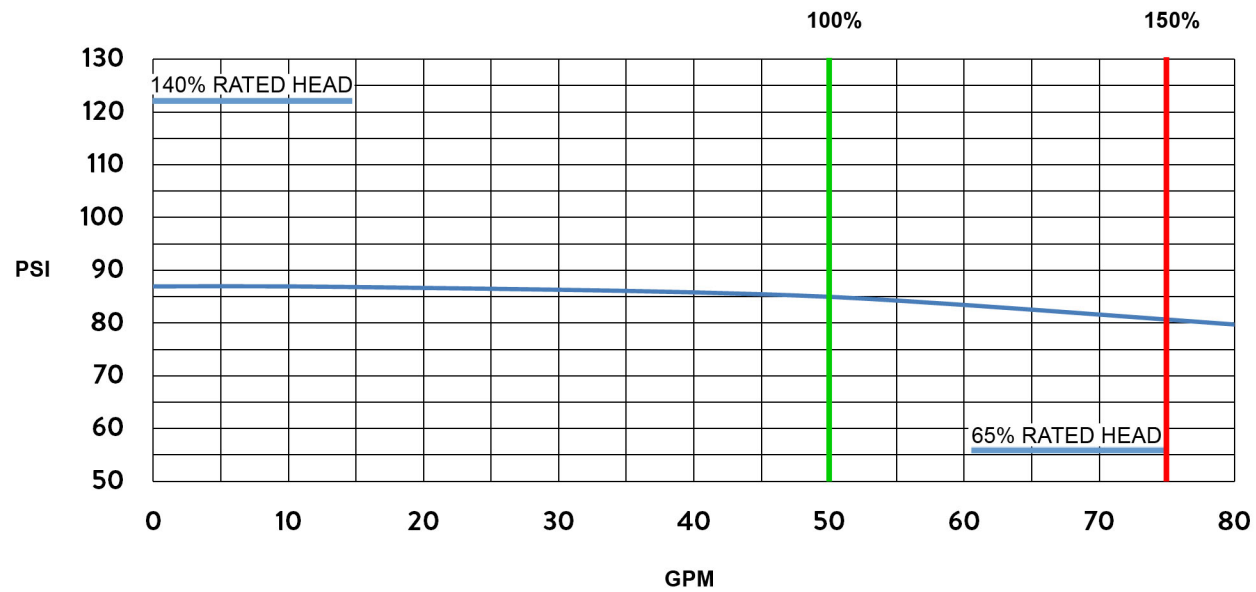
Dimensions

-33" Depth
-78" Height
-34" Width



*All dimensions are approximate and subject to change without notice.

13-ULV50 50GPM @ 85PSI 10HP UL/FM VERTICAL INLINE FIRE PUMP





Fire Pump Controller

Eaton EPCT Fire

Touchscreen based electric fire pump controllers



Powering Business Worldwide

Product Description

The EPCT Fire features an advanced, 7" color touchscreen that incorporates both the fire pump controller (FPC) and automatic transfer switch (ATS) functionality into one, intuitive display.

Designed solely with the consumer in mind, the EPCT Fire enables technicians to commission the fire pump controller faster; troubleshooting is made easier and is more effective through the use on-screen history filtering and diagnostic monitoring.

All full-service fire pump controllers can be offered in either full-voltage or reduced voltages starting methods:

- FD/FT20 - Limited service
- FD/FT30 - Across-the-line
- FD/FT40 - Part winding
- FD/FT50 - Primary resistor
- FD/FT60 - Autotransformer
- FD/FT70 - WYE-Delta (Star-Delta) open transition
- FD/FT80 - WYE-Delta (Star-Delta) closed transition
- FD/FT90 - Soft start

Product Features

Touchscreen Display

General

Speed of commissioning, configuration and troubleshooting are more critical to businesses today more than ever. Through the use of a 7" touchscreen, users can easily program all site specific setpoints through an intuitive menu structure, view all critical system information, and troubleshoot quickly and accurately via on-screen diagnostics.

Automatic Transfer Switch Integration

Going away from the multiple screen approach, the EPCT Fire touchscreen integrates both the Fire Pump Controller and Automatic Transfer Switch into one display enabling the user to effectively manage programming and operation from one source.

Commissioning Simplified

The Startup tab features all controller related commissioning tasks such as: Quick Setup, Setup Phase Reversal, Flow Test, Manual/Automatic Starts, and Test Alarms.

UL Type Rating

The touchscreen display has been tested in accordance with UL and achieves a type 4X rating.

Programming Menu

Startup tab

This tab system enables the user to complete all controller related commissioning tasks. Each sub-menu within the Startup tab guides the user through step-by-step, intuitive screens to quickly and effectively complete the startup and commissioning process.

Panel Setup tab

All variables relating to the panel, such as language, date and time, nominal voltage, etc., are located in the Panel Setup tab. For all programming points within the Panel Setup tab, refer to the instruction manual: MN124016EN.

Help tab

The help tab provides end users service contact information from the company that commissioned the unit (if programmed), factory contact information, and a QR code to download the instruction manual onto a mobile device.

Pressure Settings tab

Contains a variety of pressure settings that may be programmed to suit site requirements. Some key settings include: Start Pressure, Stop Pressure, Low Pressure Alarm, High Pressure Alarm, Low Suction Shutdown, Low Foam Shutdown, Pressure Units, and the ability to calibrate the transducer.

Timer Values tab

This tab system contains the programming point for all fire pump controller related timers. These timers are: Minimum Run Time, Acceleration Time, Sequential Start Time, Fail to Start Time, Fail to Stop Time, and Weekly Motor Test Timer.

ATS Settings tab (if equipped)

The ATS Settings tab will only be enabled on units equipped with an automatic transfer switch. Programming points within this tab only pertain to the operation of the transfer switch.

Alarm Setpoints tab

There are seven (7) programmable alarm points within this tab system: Phase Reversal, Phase Failure Alarm Setpoint, Motor Overload Setpoint, Transducer Fail Pump Start, Abort Motor Test on Low Voltage, Voltage Alarm Settings, and Frequency Alarm Settings.

Inputs/Outputs tab

The I/O board is capable of accepting ten (10) custom inputs that can be programmed for seventeen (17) predefined conditions. The output relays can be programmed for sixty-one (61) separate conditions. Additional relays can be added through the use of a single or multiple optional relay boards.

History/Statistics/Diagnostics tab

This tab system allows the customer/technician to view historical data, controller statistics, controller diagnostics, and startup information. To assist, the controller can filter for specific events or between certain dates to speed up troubleshooting.

I/O Board

Power Supply

The redesigned I/O board is equipped with a full voltage power supply capable of accepting voltage inputs between 200-600VAC three phase, or 240VAC single phase.

Customer Input Connections

Connection terminals are provided at the top of the I/O board for external customer connections that can be programmed through the touchscreen display.

Output Relays

The I/O board features four (4), 250VAC, 8A, 2 Form-C relays designated for the following: Common Alarm, Power/Phase Failure, Phase Reversal, and Pump Run. Each relay socket has a surface mount LED to indicate the relay's coil status.

Optional Boards

The controller can accept up to four (4) additional option boards: optional relay board, MODBUS communication board, secondary 4-20mA device board, and an alarm board. The controller has provisions to allow future optional boards to be added with plug-and-play functionality.

Other Components

Drain Valve Solenoid

All full-service EPCT Fire controllers are equipped with a drain valve solenoid used for manual or automatic motor tests.

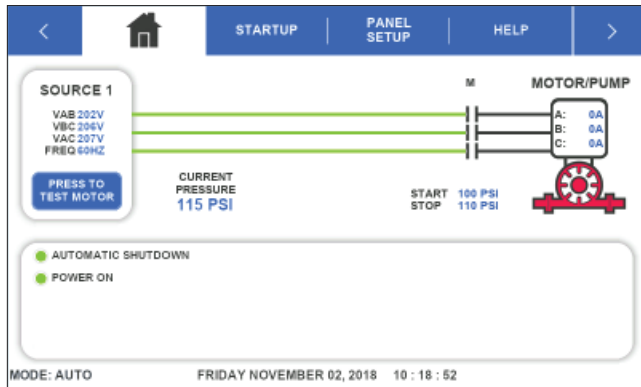
External USB Port

The USB port allows the user to download historical messages, statistics, diagnostic information, startup file, and current controller configuration to any USB device with FAT16 or FAT 32 formatting.

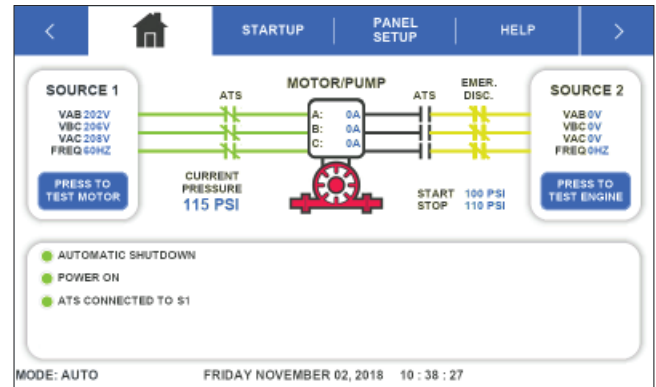
Enclosures

The EPCT Fire controllers come standard with UL type 2 (drip-proof) enclosures. Optional enclosures are available and include: type 3, 3R, 4, 4X, and 12.

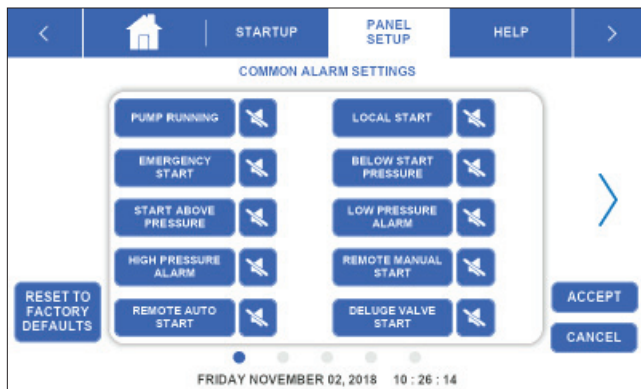
Display Screens



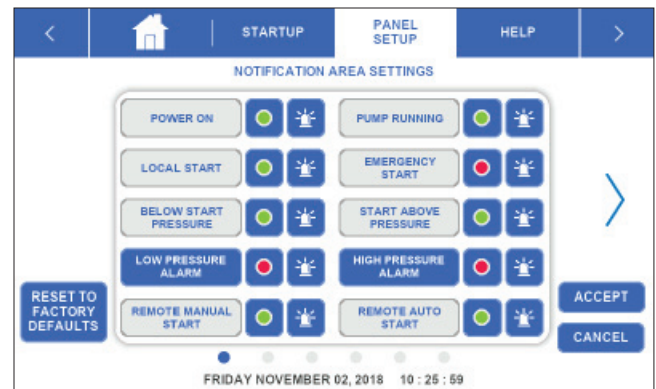
Home tab - without ATS



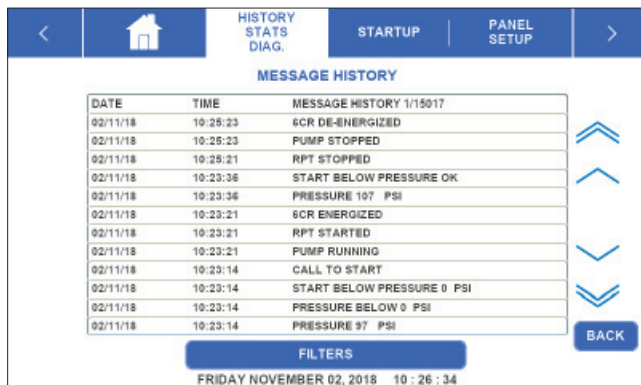
Home tab - with ATS



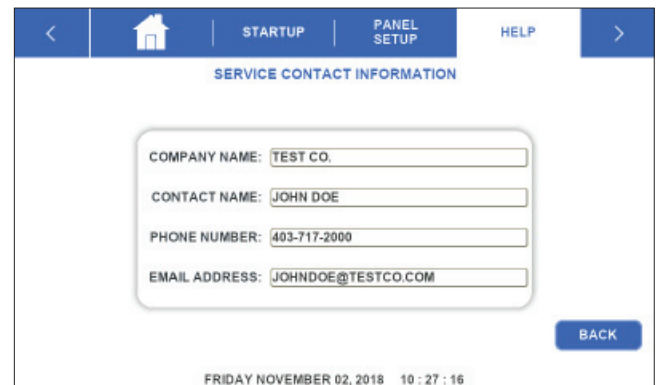
Common Alarm Settings



Notification Area Settings



Message History



Customer Service Contact

Emergency Start Operator

A mechanically operated emergency start handle (ESH) will mechanically activate the motor contactor(s) independently from any electrical control circuits.

Standards & Certifications

All EPCT Fire full-service, electric fire pump controllers meet or exceed the requirements of Underwriters Laboratories and Underwriters Laboratories Canada [UL218 and UL1008], Factory Mutual, the Canadian Standards Association, New York City building code, CE mark, U.B.C./C.B.C. seismic requirements, and are built to the latest edition of NFPA 20 standards. The EPCT Fire electric fire pump controllers are suitable for use as service entrance equipment - does not meet CEC requirements for Canada.

Quick Specification Overview

Starting Conditions					Withstand Ratings		
Starting Method	Starting Voltage	Starting Current	Starting Torque	Motor Connections	Voltage	HP	Short Circuit Withstand Rating
FD/FT20 Limited Service	Full	600%	100%	2 (SP) or 3	200-208V	5-30	25,000
					220-240V	5-30	25,000
					380-415V	5-30	25,000
					440-480V	5-30	25,000
					575-600V	5-30	18,000
					240V (SP)	5-15	10,000
FD/FT30 Across-the-Line	Full	600%	100%	3	200-208V	5-150	100,000
					220-240V	5-200	100,000
					380-415V	5-300	100,000
					440-480V	5-400	100,000
					575-600V	5-500	25,000
FD/FT40 Part Winding	Reduced	65%	50%	6	200-208V	5-250	100,000
					220-240V	5-300	100,000
					380-415V	5-500	100,000
					440-480V	5-600	100,000
					575-600V	5-700	25,000
FD/FT50 Primary Resistor	Reduced	50%	42%	3	200-208V	5-150	100,000
					220-240V	5-200	100,000
					380-415V	5-300	100,000
					440-480V	5-400	100,000
					575-600V	5-500	25,000
FD/FT60 Autotransformer	Reduced	45%	42%	3	200-208V	5-150	100,000
					220-240V	5-200	100,000
					380-415V	5-300	100,000
					440-480V	5-400	100,000
					575-600V	5-500	25,000
FD/FT70 WYE-Delta (Star-Delta) Open Transition	Reduced	33%	33%	6	200-208V	5-250	100,000
					220-240V	5-300	100,000
					380-415V	5-500	100,000
					440-480V	5-600	100,000
					575-600V	5-700	25,000
FD/FT80 WYE-Delta (Star-Delta) Closed Transition	Reduced	33%	33%	6	200-208V	5-250	100,000
					220-240V	5-300	100,000
					380-415V	5-500	100,000
					440-480V	5-600	100,000
					575-600V	5-700	25,000
FD/FT90 Soft Start	Reduced	Adjustable	Adjustable	3	200-208V	5-150	100,000
					220-240V	5-200	100,000
					380-415V	5-300	100,000
					440-480V	5-400	100,000
					575-600V	5-500	25,000

Eaton
1000 Eaton Boulevard
Cleveland, OH 44122
United States
Eaton.com

Electrical Sector
Canadian Operations
5050 Mainway
Burlington, ON L7L 5Z1
Canada
EatonCanada.ca
CHFire.com

© 2018 Eaton
All Rights Reserved
Printed in Canada
Publication No. BR124053EN / 001
January 2018

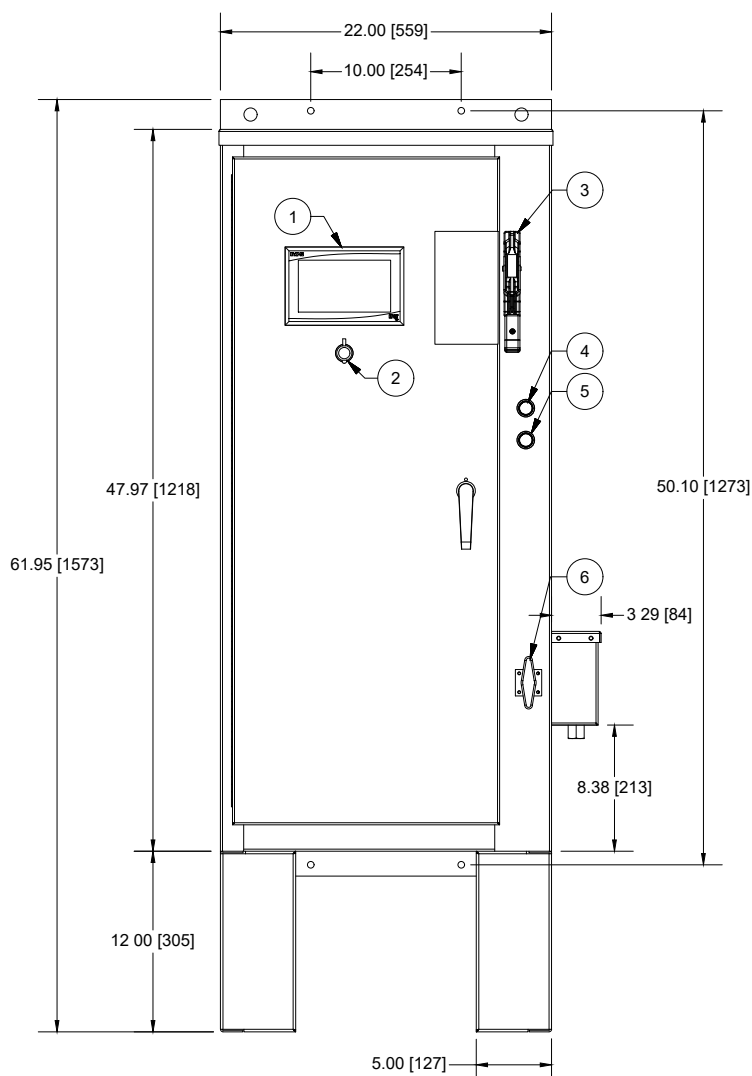
Eaton is a registered trademark.

All other trademarks are property
of their respective owners.

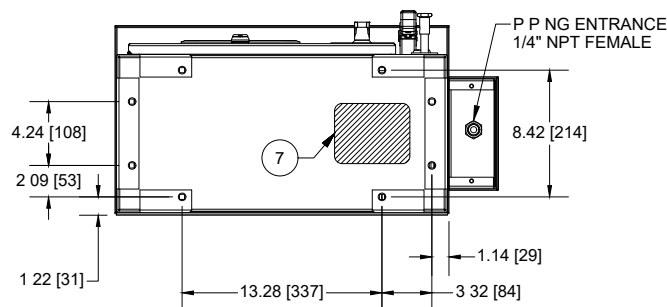
Follow us on social media to get the
latest product and support information.



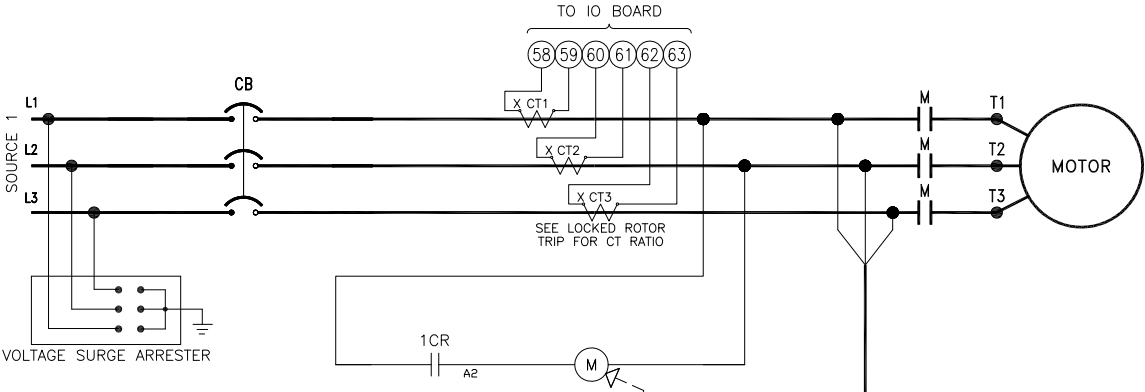
Powering Business Worldwide



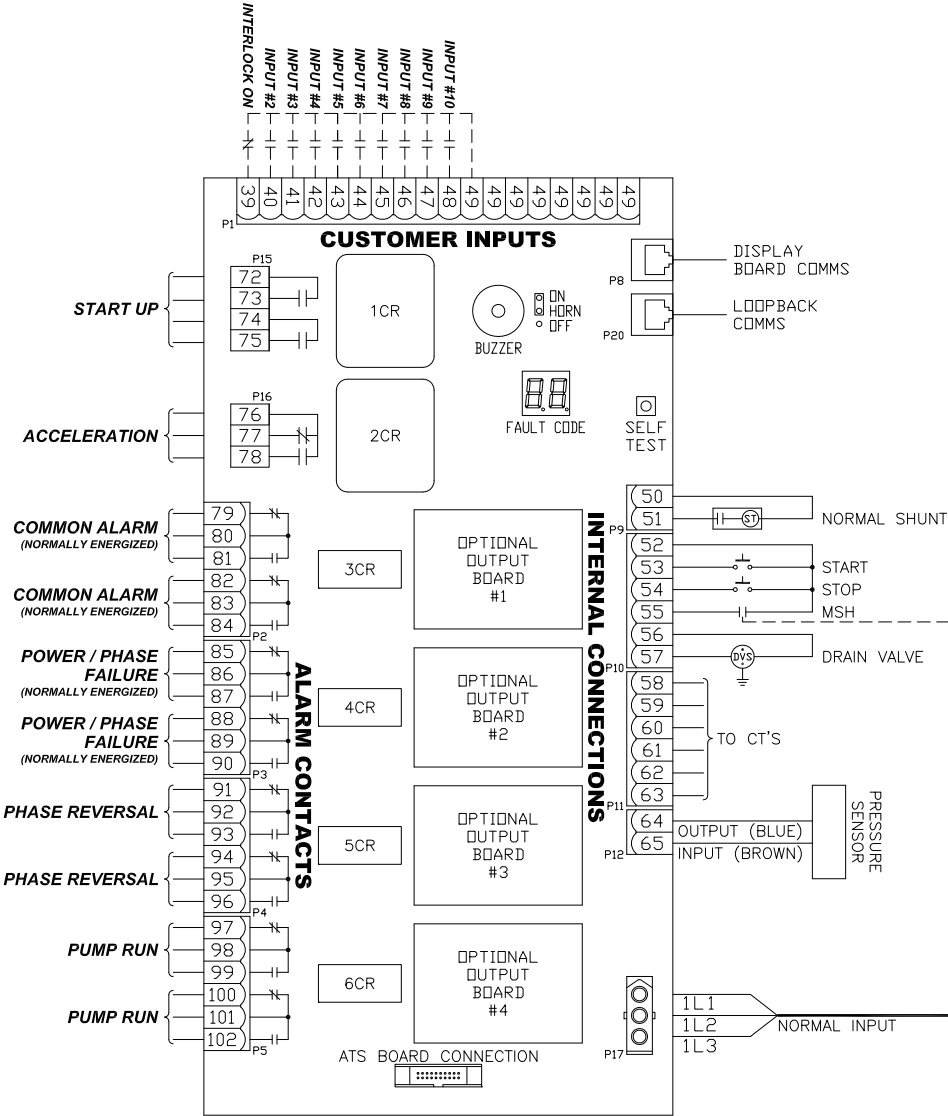
- NOTES:
1 - DIMENSIONS: in [mm]
2 - ALL ENCLOSURES FINISHED IN RED
3 - STANDARD ENCLOSURE: TYPE (NEMA) 2

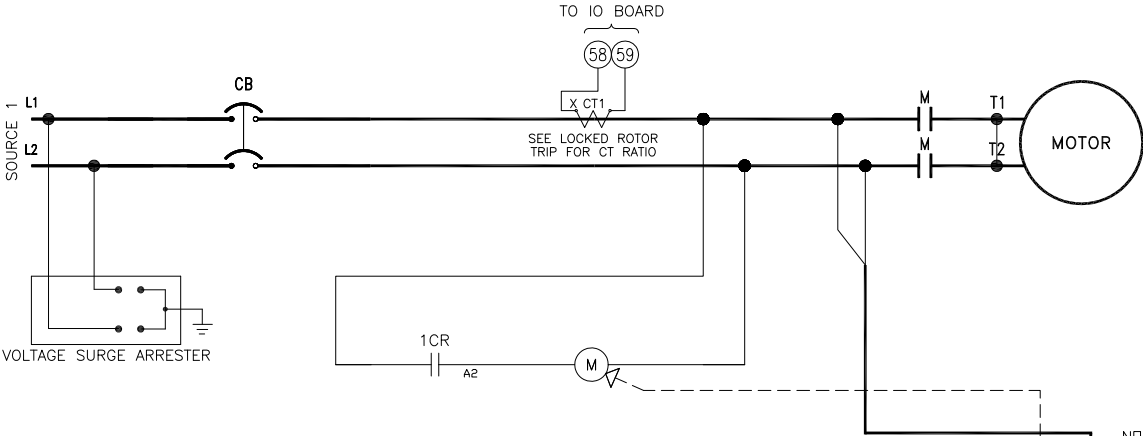


Motor HP	Line voltage	Withstand rating		Approximate weight Lbs. (Kg)
		Standard	Intermediate	
5 - 30	200 - 208V	25,000	65,000	180 (81)
5 - 30	220 - 240V			
5 - 30	380 - 415V *			
5 - 30	440 - 480V			
5 - 30	550 - 600V	18,000	25,000	
5 - 15	240V - S/P	10,000	65,000	



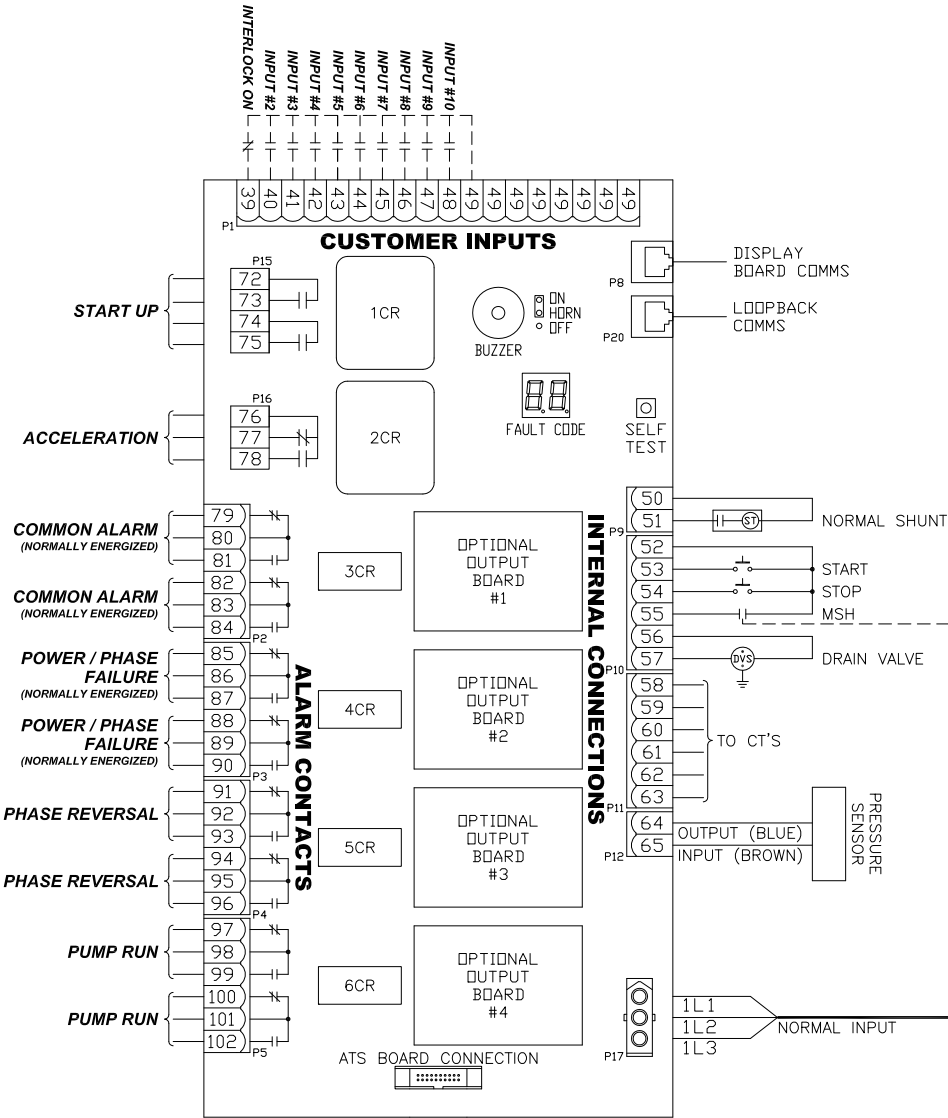
- NOTES:
- 1. POWER/PHASE FAILURE AND COMMON ALARM RELAYS ARE ENERGIZED UNDER NORMAL CONDITIONS.
 - 2. ALL RELAY CONTACTS ARE SHOWN IN NO POWER CONDITION.
- LEGEND:
- CB - CIRCUIT BREAKER
 - CT - CURRENT TRANSFORMER
 - M - RUN CONTACTOR
 - MSH - MANUAL START HANDLE (EMERGENCY) MICRO SWITCH





NOTES:
1. POWER/PHASE FAILURE AND COMMON
ALARM RELAYS ARE ENERGIZED UNDER
NORMAL CONDITIONS.
2. ALL RELAY CONTACTS ARE SHOWN
IN NO POWER CONDITION.

LEGEND:
CB - CIRCUIT BREAKER
CT - CURRENT TRANSFORMER
M - RUN CONTACTOR
MSH - MANUAL START HANDLE
(EMERGENCY) MICRO SWITCH



Line Terminals Connections

Line Voltage

	200-208	220-240	380-415	440-480	575-600	Line Lugs (QTY.) & Cable Size per Ø	Service Ground Lugs (QTY.) & Cable Size per Ø
Max HP	25	30	30	30	30	(1) #14 - 1/0 (CU/AL)	(1) #14 - 2/0 (CU/AL)
	30	-	-	-	-	(1) #4 - 4/0 (CU)	(1) #14 - 2/0 (CU/AL)

Load Terminals Connections

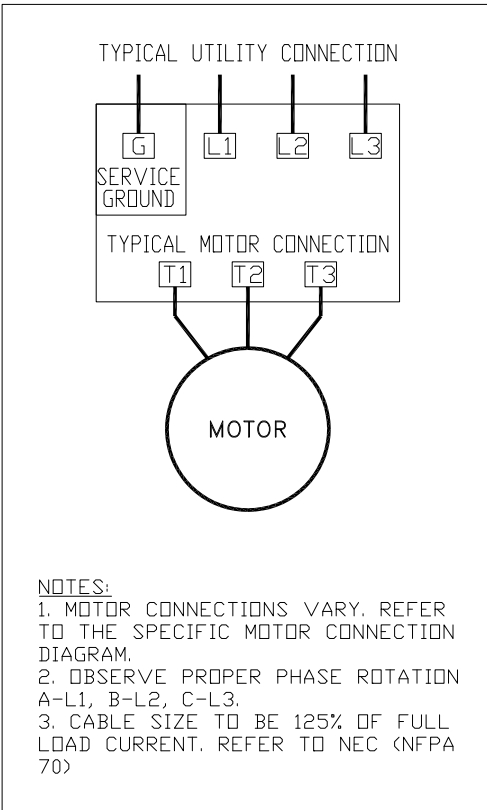
Line Voltage

	200-208	220-240	380-415	440-480	575-600	Single Run Cable Sizes	Double Run Cable Sizes
Max HP	10	10	15	20	25	#14 - #8 (CU/AL)	#14 - #8 (CU/AL)
	20	25	30	30	30	#14 - #1 (CU/AL)	#14 - #2 (CU/AL)
	30	30	-	-	-	#8 - 3/0 (CU/AL)	#8 - 2/0 (CU/AL)

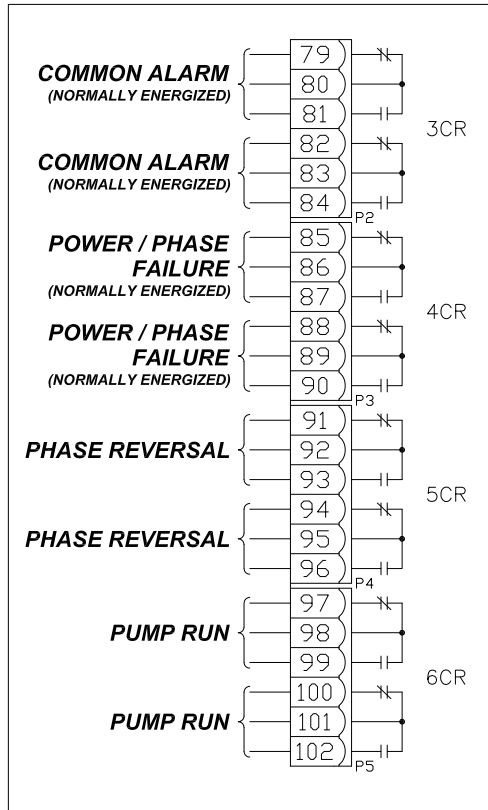
For ambient temperatures exceeding 30C (86F), the temperature rating of motor conductors is recommended to be a minimum of 90C (194F)

For proper cable size, refer to the National Electric Code (NEC - NFPA70)

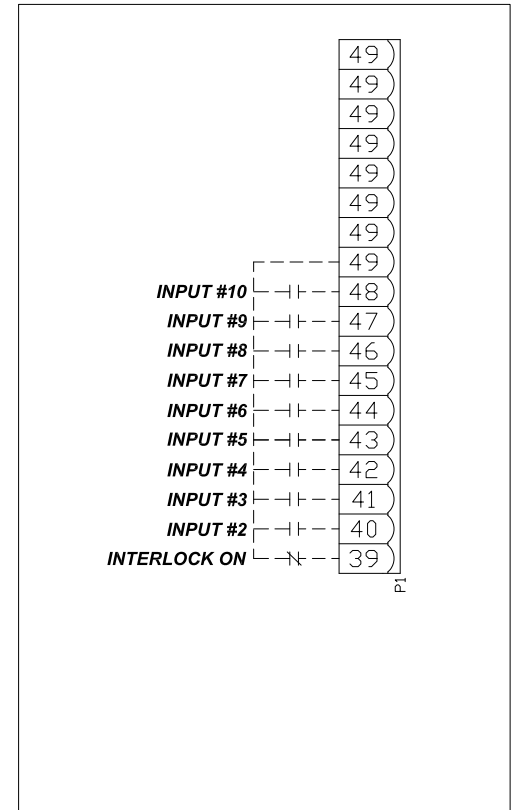
CONTROLLER CONNECTIONS



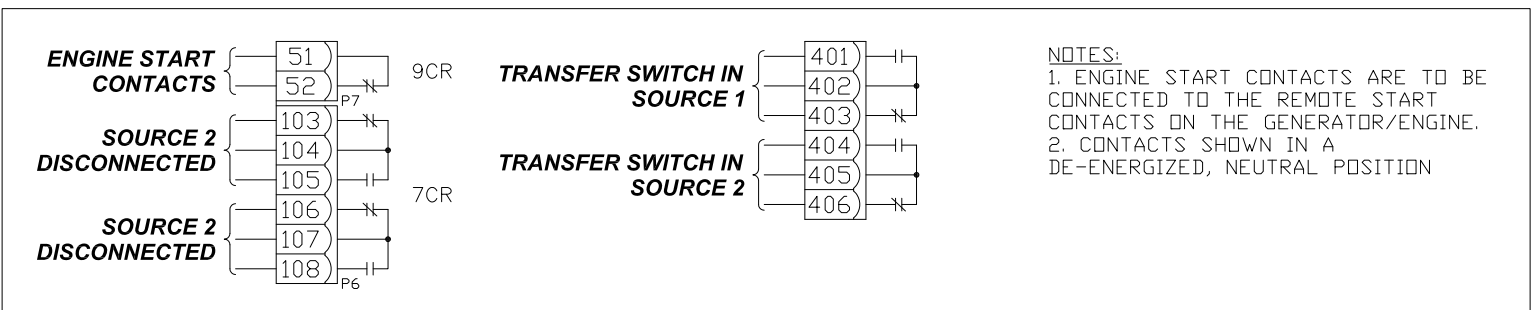
ALARM CONTACTS



CUSTOMER INPUTS



TRANSFER SWITCH CONNECTIONS (IF EQUIPPED)



Line Terminals Connections

Line Voltage

	200-208	220-240	380-415	440-480	575-600	Line Lugs (QTY.) & Cable Size per Ø	Service Ground Lugs (QTY.) & Cable Size per Ø
Max HP	-	10	-	-	-	(1) #14 - 1/0 (CU/AL)	(1) #14 - 2/0 (CU/AL)
	-	15	-	-	-	(1) #4 - 4/0 (CU)	(1) #14 - 2/0 (CU/AL)

Load Terminals Connections

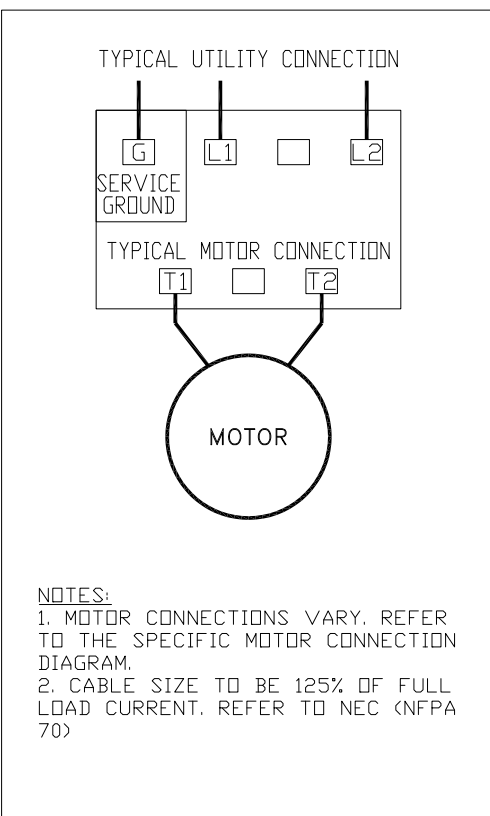
Line Voltage

	200-208	220-240	380-415	440-480	575-600	Single Run Cable Sizes	Double Run Cable Sizes
Max HP	-	5	-	-	-	#14 - #8 (CU/AL)	#14 - #8 (CU/AL)
	-	15	-	-	-	#14 - #1 (CU/AL)	#14 - #2 (CU/AL)

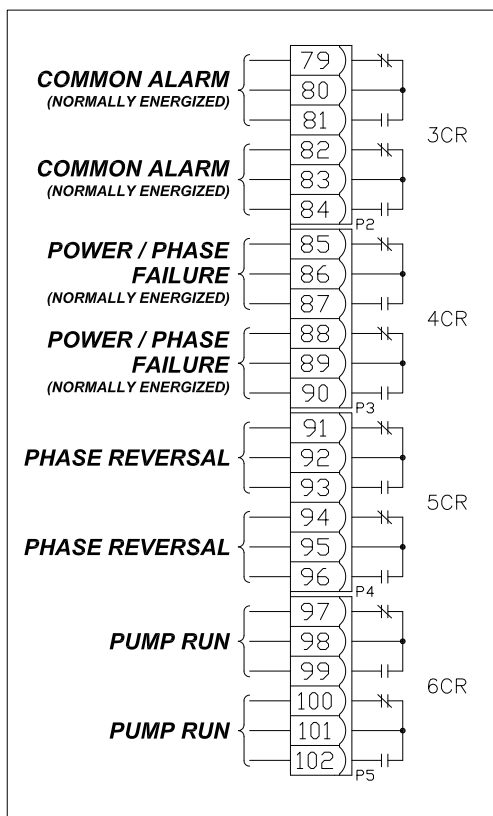
For ambient temperatures exceeding 30C (86F), the temperature rating of motor conductors is recommended to be a minimum of 90C (194F)

For proper cable size, refer to the National Electric Code (NEC - NFPA70)

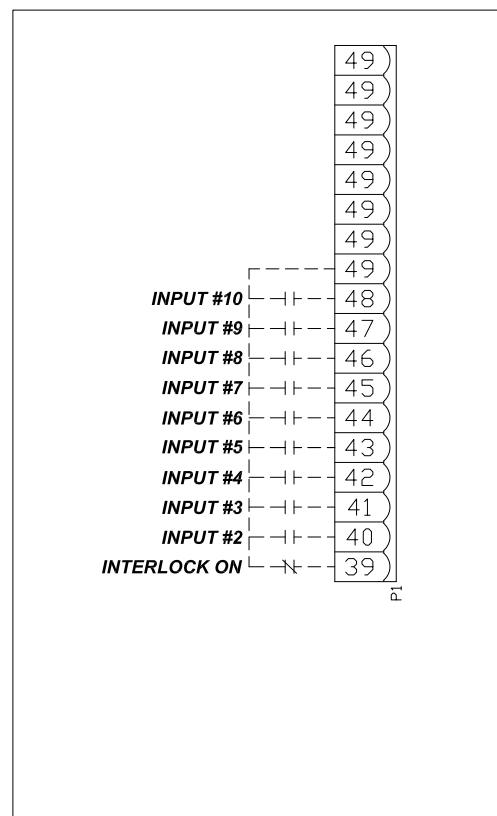
CONTROLLER CONNECTIONS



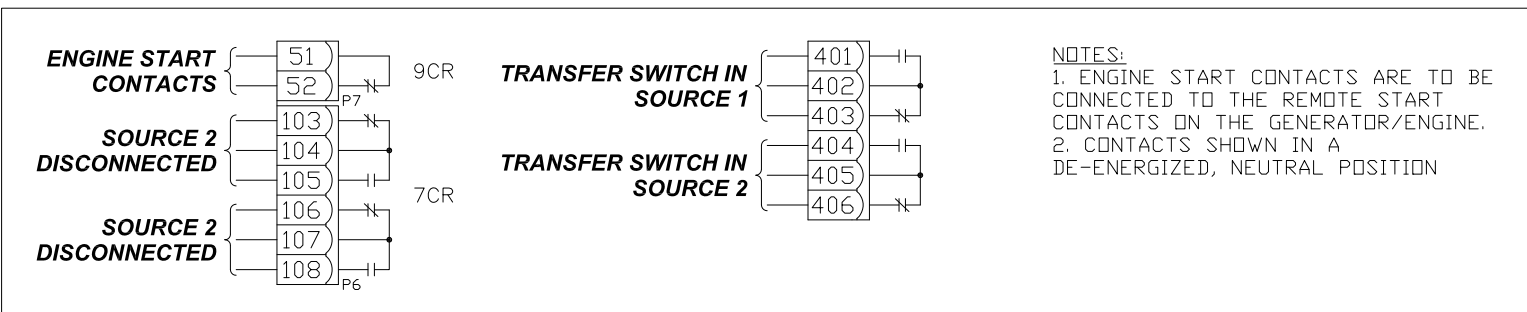
ALARM CONTACTS



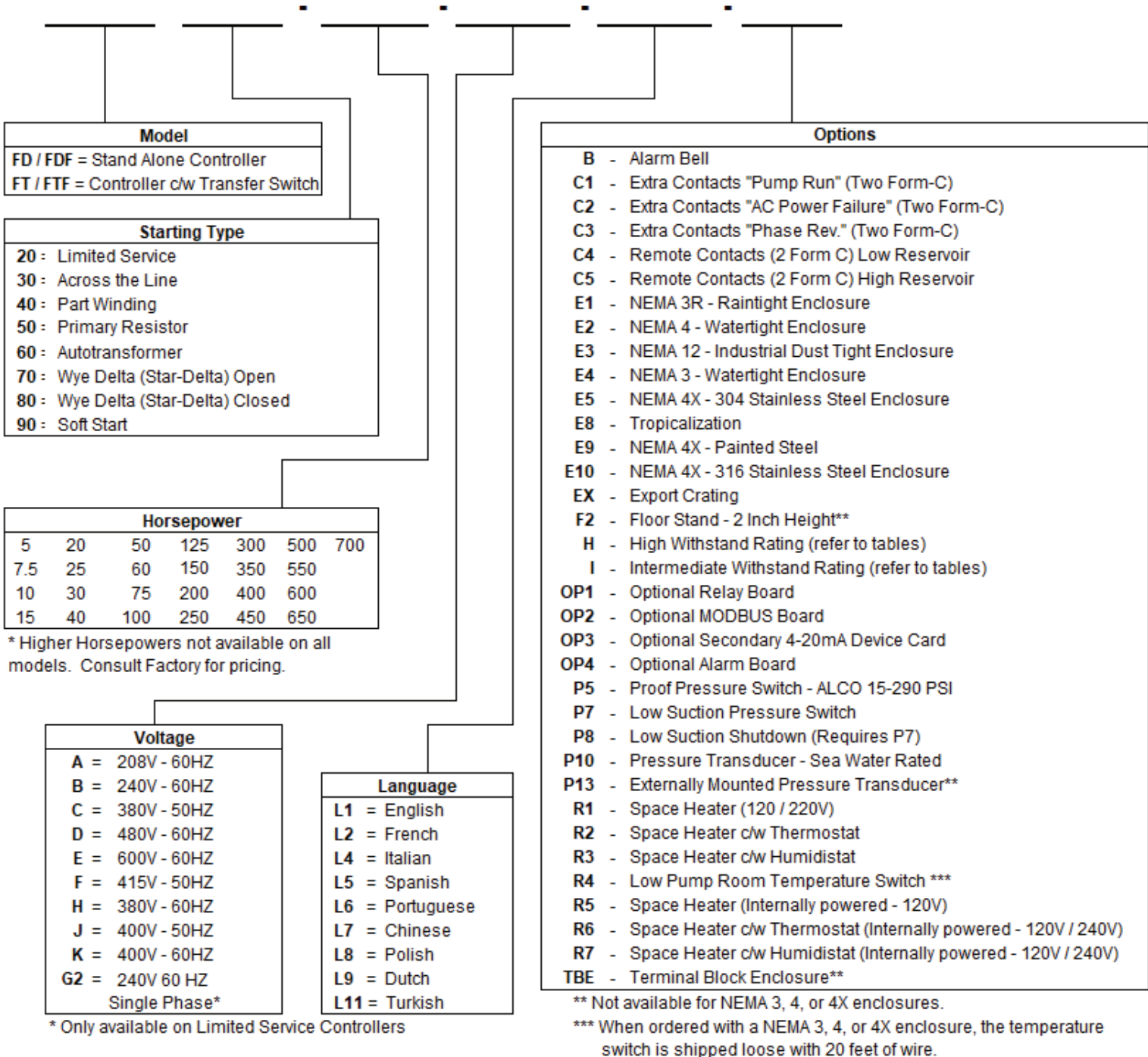
CUSTOMER INPUTS



TRANSFER SWITCH CONNECTIONS (IF EQUIPPED)



EPCT Fire option selection matrix



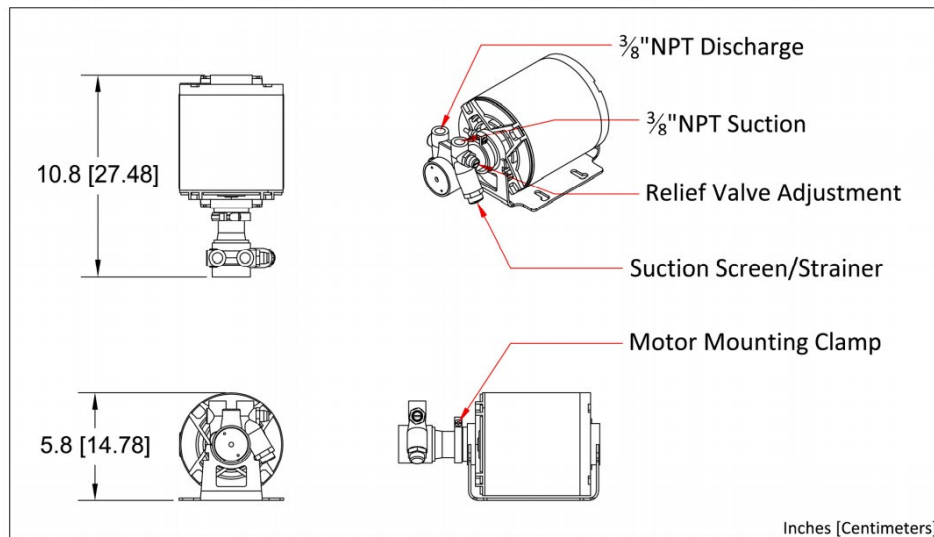


Jockey Pump

(Optional Equipment)

Talco ULV Jockey Pump

- High Quality Rotary Vane Pump
 - 1.8GPM @ 240PSI
- 1/3HP* 200V-240V Electric Motor
 - Resilient Mounted
 - Permanently Lubricated
- Integrated Recirculation Relief Valve
 - Factory Set to 170PSI
 - No External Discharge
- Removable Mesh Suction Strainer
 - Cleanable & Reusable



Dimensions are approximate.

*Motor HP subject to change without notice based on availability.

503-688-1231 www.talcofire.com 6040 NE 112th Ave, Portland OR

TALCO
— FIRE SYSTEMS —

Commercial Pressure Switches

Electromechanical Square D Brand 9013

For power circuits, FRG, FHG, and G

Environmental characteristics

Pressure switch type		FRG	FHG	G
Conformity to standards		UL 508, NEC Article 430-84, ANSI /NSF Standard 61, FDA 21CFR.2600		
Product Certifications		UL File E12158 CCN NKPZ , CSA File LR 25490 Class 321106		
Protective treatment		N/A		
Ambient air temperature	°C	For operation, 0 °C (32 °F) min to 125 °C (257 °F) max For storage, -30 °C (-22 °F) min to 70 °C (158 °F) max		
Fluids controlled		Fresh water, or sea water (with Form Q)		
Materials		Cover: polypropylene, Noryl [®] thermoplastic resin or equivalent for Type 3R, Component material in contact with fluid: flange, zinc plated or equivalent (fluid entry), nitrile or equivalent rubber (diaphragm)		
Operating position		NEMA Type 1, and Type IP20 in any position, NEMA Type 3R in the vertical position only		
Vibration resistance		—		
Shock resistance		—		
Electric shock protection		—		
Degree of protection		NEMA Type 1, IP20 and NEMA Type 3R (some references) must be mounted in vertical position to maintain enclosure rating		
Operating rate	cycles/m	10		
Repeat accuracy		+/- 3 % of the range		
Fluid connection		1/8" NPSF internal, 1/4" NPSF internal, 1/2"NPT External, 1/4" Bayonet (barbed), 90 deg. Elbow 1/4" Bayonet, Four Way Flange, 3/8" NPSF (Internal), 1/4" Flare, other specials		
Electrical connection		2 open side entries, 3/4" diameter, with two flats		3 Conduit 1/2" Knockouts

Contact block characteristics

Type of contacts		One 2 pole, 2 N/C (4 terminal) contacts, snap action
Resistance across terminals	m Ω	< 25
Terminal referencing		N/A
Short-circuit protection	A	5,000
Connection		Screw clamp terminals. Clamping capacity up to #10 AWG (5.261 mm ²)
Electrical durability	cycles	100,000
Mechanical durability	cycles	300,000

Electrical Ratings

1 Pole		FRG			FHG ▲ ■			G		
Power ratings of controlled motors	Voltage	~ 1-phase	~ 3-phase	—	~ 1-phase	~ 3-phase	—	~ 1-phase	~ 3-phase	—
	32 V	—	—	—	—	—	—	—	—	—
	115 V	0.75 kW (1 HP)	—	0.18kW (.25 HP)	1.1 kW (1.5 HP)	1.5 kW (2 HP)	0.18 kW (.25 HP)	0.75 kW (1 HP)	—	0.37kW (.50 HP)
	230 V	0.75 kW (1 HP)	—	0.18kW (.25 HP)	1.5 kW (2 HP)	2.2 kW (3 HP)	0.18 kW (.25 HP)	1.5 kW (2 HP)	—	0.37kW (.50 HP)
	460 / 575 V	—	—	—	—	0.75 kW (1 HP)	—	1.5 kW (2 HP)	—	—
2 Pole		~ 1-phase	~ 3-phase	—	~ 1-phase	~ 3-phase	—	~ 1-phase	~ 3-phase	—
Power ratings of controlled motors	Voltage	~ 1-phase	~ 3-phase	—	~ 1-phase	~ 3-phase	—	~ 1-phase	~ 3-phase	—
	32 V	—	—	0.18 kW (.25 HP)	—	—	—	—	—	—
	115 V	0.75 kW (1 HP)	0.75 kW (1 HP)	0.18 kW (.25 HP)	1.5 kW (2 HP)	2.2 kW (3 HP)	0.37 kW (.50 HP)	1.5 kW (2 HP)	2.2 kW (3 HP)	0.75 kW (1 HP)
	230 V	0.75 kW (1 HP)	0.75 kW (1 HP)	0.18 kW (.25 HP)	2.2 kW (3 HP)	3.7 kW (5 HP)	0.37 kW (.50 HP)	2.2 kW (3 HP)	3.7 kW (5 HP)	0.75 kW (1 HP)
	460 / 575 V	—	—	—	—	0.75 kW (1 HP)	—	3.7 kW (5 HP)	3.7 kW (5 HP)	—

Note:
Type FRG and G are all Form H

▲ Includes
FHG 2, 3, 4, 9, 12, 13, 14, 19, 42, 44, 49

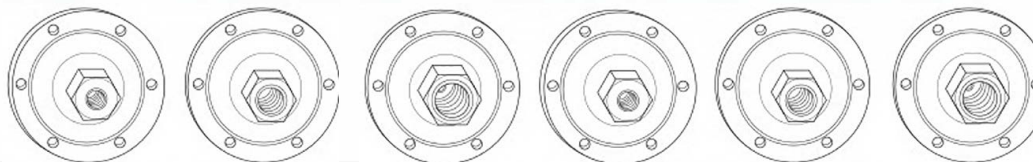
■ Includes
FHG 22, 24, 29, 32, 33, 34, 39, 52, 54, 59

References, characteristics

Commercial Pressure Switches

Electromechanical Square D Brand 9013
For power circuits G
2-pole 2 N/C contacts
Degree of protection IP20, NEMA Type 1, 7 & 9

Flange Style



Adjustable range of switching point
Contacts open on rising pressure
2 Pole

Fluid connections	1/8" NPSF internal	1/4" NPSF internal	3/8" NPSF internal	1/8" NPSF internal	1/4" NPSF internal	3/8" NPSF internal
-------------------	--------------------	--------------------	--------------------	--------------------	--------------------	--------------------

References

NEMA Type 1, IP20	9013GHG1	9013GHG2	9013GHG3			
NEMA Type 7, NEMA Type 9				9013GHR1	9013GHR2	9013GHR3
Fluids / Pressure controlled	Water or Air	Water or Air	Water or Air	Water or Air	Water or Air	Water or Air
Pressure range						
Cut-Out PSIG (bar)	60-200	60-200	60-200	65-200	65-200	65-200
Cut-In PSIG (bar)	40-170	40-170	40-170	35-150	35-150	35-150
Weight lbs (kg)	2 lbs (0.91)	2 lbs (0.91)	2 lbs (0.91)	8 lbs (3.62)	8 lbs (3.62)	8 lbs (3.62)

Complementary characteristics not shown under general characteristics

Differential PSIG (bar)	20-40 (1.4-2.8)	20-40 (1.4-2.8)	20-40 (1.4-2.8)	30-50 (2.1-3.5)	30-50 (2.1-3.5)	30-50 (2.1-3.5)
Maximum permissible pressure PSIG (bar)	80 (5.5)	80 (5.5)	80 (5.5)	80 (5.5)	80 (5.5)	200 (13.8)
Mechanical life	300, 000 operating cycles					
Cable entry	3 Conduit 1/2" Knockouts	3 Conduit 1/2" Knockouts	3 Conduit 1/2" Knockouts	2 3/4" 14 NPT	2 3/4" 14 NPT	2 3/4" 14 NPT
Pressure switch type	Diaphragm					

Ordering Information

Pressure Codes

Below is the pressure code table.
Existence of a code does not imply that the code is available for any or all devices.

Settings	Code
20-40 PSI	J20
30-50 PSI	J21
40-60 PSI	J23
40-80 PSI	J24
60-80 PSI	J25
70-90 PSI	J26
70-100 PSI	J28
75-100 PSI	J29
80-100 PSI	J30
90-120 PSI	J31
100-80 PSI	J51
100-125 PSI	J53
110-125 PSI	J54
110-150 PSI	J56
120-150 PSI	J57
125-150 PSI	J58
125-175 PSI	J60
130-175 PSI	J61
140-170 PSI	J66
140-175 PSI	J62
145-175 PSI	J63
150-120 PSI	J64
150-175 PSI	J67
215-250 PSI	J65
Specify pressure settings	J99

- 1 Specify Class 9013 Type G.
- 2 Select pressure code and add code designation to end of type number. Be sure that pressure code falls within the limits of the device as shown in the device listings.
- 3 If special features are desired, add the appropriate Form letter to the Class and Type. Arrange Form letters in alphabetical sequence when ordering more than one special feature.
- 4 Place packaging code at end of sequence with other forms when ordering. If no packaging code is indicated, devices will be shipped individually packaged.
For standard pack of 10 devices per box C10
Available on GHG, GHG, GSB, and GSG

See page 25 for Form C10.

TALCO FIRE
SYSTEMS



RESIDENTIAL & COMMERCIAL FIRE PUMP SPECIALISTS

6040 NE 112TH AVE. PORTLAND, OREGON 97220

PHONE: 800-878-8055 WWW.TALCOFIRE.COM

Valves & Fittings

Fire Main Gate Valve

INSIST ON
FPPI

OS&Y Valves (Outside Stem & Yoke), RS

Description

FPPI OS&Y Valves feature a bronze* body (ASTM C83600) cast iron hand wheel, with steel, stainless steel, and brass components for extended service life. OS&Y valves (outside stem and yoke) are perfect for sprinkler system monitoring. When the valve is opened, the stem is visible above the hand wheel. In the closed position, the stem is concealed inside the valve body. This allows for immediately identifying if the valve is "OPEN" or "CLOSED". OS&Y valves can also be fitted with external tamper switches for central station or panel monitoring.



Installation

Install in accordance with customary installation practices.

Specifications

Material:

Body: Bronze* ASTM C83600

Bonnet: Bronze* ASTM C83600

Stem: Brass*

Hand Wheel: Cast Iron

Packing Gland: Bronze* ASTM C83600

Disc: Bronze* ASTM C83600

Disc Pin: SS-304

Gland Packing: Graphite

Stud: Steel

Yoke Bushing: Brass*

Set Screw: Steel

Item Numbers / Sizes:

06-702-00 1" IPS

06-704-00 1 1/4" IPS

06-706-00 1 1/2" IPS

06-708-00 2" IPS

Finish:

Body: Rough Brass*

Handwheel: Red

*Contains lead. Not for use in water systems intended for human consumption.

The information contained herein is produced in good faith and is believed to be reliable but is provided for guidance and information purposes only. FPPI and its agents cannot assume liability or responsibility for results obtained in the use or misuse of its product by persons whose methods and qualifications are outside and beyond our control. It is the user's responsibility to determine the suitability of, methods of use, preparation prior to use, and appropriate installation for all products purchased from FPPI. It is the user's sole responsibility to observe and adapt such precautions as may be advisable or necessary for the protection of personnel and property in the handling and use of any of our products.



3198 LIONSHEAD AVE
CARLSBAD, CA 92010
+ 1 (760) 599-1168
+ 1 (800) 344-1822
+ 1 (800) 344-3775 FAX

© 2016 Fire Protection Products, Inc.

WWW.FPPI.COM





Stock No. 1010201

UL and cUL Listed, FM Approved, CSFM Listed, NYMEA Accepted

Dimensions: 7" L x 3.75" W x 3" D (including bracket)
(17,7 cm x 9,5 cm x 7,6 cm)

Weight: 13.6 oz. (385,5 g.)

Enclosure: Non-Corrosive Composite Material

Environmental Limitations:

- NEMA 4 and NEMA 6P rated enclosure when proper electrical fittings are used. (IP67)
- Temperature range: -40° F to 140° F (-40° C to 60° C)

Housing Cover Tamper: Activated by housing cover removal.

Contact Ratings: SPDT Plug Contacts: 100 mA at 28 VDC/AC
250 mA at 12 VDC/AC
SPDT Cover Tamper: 250 mA at 28 VDC/AC

Cable: 2-wire, 18 Ga. Waterproof - Approx. 8' (2,43m) long

General

The Model PTS-C is designed to supervise sprinkler system control valves and may also be used to secure gates and other applications. This unit is particularly useful for unusual conditions, such as non-rising stem valves.

Nema 6P enclosure allows the device to be mounted outdoors, even in areas subject to flooding such as pits and wells. Sealed reed switch operation virtually eliminates contact corrosion.

Turning the valve wheel will pull the plug out of the receptacle. The plug cannot be reinserted after operation until the plug receptacle cover is removed with the special hex key provided. This key should be left with the building owner or responsible party. Replacement or additional cover tamper screws and hex keys are available. For cover tamper screws, order stock no. 5490344. For hex key, order stock no. 5250062.

Installation

Insert plug into housing, take the loose end of the cable and loop it through the valve handle and into the housing. Adjust the length of cable so the plug must be pulled from the housing when the valve is closed. Cut off excess cable and terminate on the plug terminals of the PC board. Do not leave more than 2" (50mm) of excess wiring in the housing. Dress wires to outside edge of housing so as not to interfere with cover tamper.

Wire Checkout

With the plug wired to the two P terminals and the plug inserted fully into the receptacle, place an ohmmeter across the C and N.O. terminals. The meter will show Open. Unplug the plug from the receptacle. The meter will show continuity.

Note: The two P terminals will always show continuity when the plug is connected regardless of whether the plug is inserted or not.

The cover tamper switch can be wired into the plug circuit or wired as a separate circuit. (See wiring diagrams.)

Testing

The PTS-C and its associated protective monitoring system should be tested in accordance with applicable NFPA codes and standards and/or the authority having jurisdiction (manufacturer recommends quarterly or more frequently).

CAUTION

Be sure valve is fully open before restoring PTS-C.

WARNING

As Stipulated By Factory Mutual And Underwriters Laboratories

This unit is not intended or designed for ordinary use. It is a special application device to be used for unusual conditions such as non-rising stem gate valves where no other approved or listed method of protection is available or practical. As this unit does not meet NFPA codes and standards, requiring restoration signal when the valve is positioned to normal, special attention should be given by the responsible parties to assure that the proper operation of this device is maintained. This device should only be restored to normal when the valve is in the normal condition.

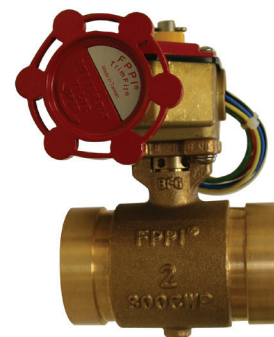
TrimFit® Bronze Butterfly Valve

INSIST ON
F P P I®

Installation Instructions

Description

TrimFit® Model BFT (Threaded Butterfly Valve) and Model BFG (Grooved Butterfly Valve) close slowly to prevent water hammer. The butterfly valves are designed to be installed in any orientation and monitored to signal if the valve is opened or closed. They are Listed and Approved for use in a fire sprinkler system.



Installation

1. The valve can be installed in any orientation in a piping system with standard ASME B1.20.1 NPT or standard roll or cut grooved pipe.
2. When threading to pipe, apply PipeFit® or equivalent thread sealant or tape.
3. Use a wrench to cramp on the hexagon end of the valve.
4. The tamper switch features two switches: Switch-1 has dual leads on the terminals. This switch is used for connection of the supervisory circuit of a listed fire alarm control panel. Switch-2 has a single lead. This switch is used for connection of auxiliary equipment.
5. All the unused wires need to be capped with lead nuts and tucked into a junction box.
6. All connections need to be reviewed and approved by the appropriate jurisdictional authorities.

7. A No. 14 green wire is fixed inside the switch housing. It is provided as a ground for the housing.
8. The valves are intended for use with ANSI B36.10 Schedule 40 and/or Schedule 80 pipes, sizes 1", 1-1/4", 1-1/2", 2" and 2-1/2".

NOTE: ALL REPLACEMENT PARTS MUST BE OBTAINED FROM THE MANUFACTURER TO ASSURE PROPER OPERATION OF THE VALVE, AND TO MAINTAIN APPROVAL OF THE DEVICE.

The information contained herein is produced in good faith and is believed to be reliable but is provided for guidance and information purposes only. FPPI and its agents cannot assume liability or responsibility for results obtained in the use or misuse of its product by persons whose methods and qualifications are outside and beyond our control. It is the user's responsibility to determine the suitability of, methods of use, preparation prior to use, and appropriate installation for all products purchased from FPPI. It is the user's sole responsibility to observe and adapt such precautions as may be advisable or necessary for the protection of personnel and property in the handling and use of any of our products.

Specifications

Rated to 300 PSI
Switch rating:
10.1Amps/125/250VAC-60Hz
Actual switch application rating:
10 Amps/115 VAC-60Hz
0.5 Amps/28 VDC
Indoor/Outdoor Use

Materials

Body: Bronze ASTM 584
C83600
Disc: SS304
Handwheel: ASTM A216 WCB
Seat: ASTM D2000 Viton
Indicator: Powder Metal
Housing/Cover: Forged Brass
JIS C3771 (Ref. ASTM C37700)

Available Sizes

TrimFit® Model BFT (Threaded)
06-500-00 1" UL/FM
06-502-00 1 1/4" UL/ULc/FM
06-504-00 1 1/2" UL/ULc/FM
06-506-00 2" UL/ULc/FM
06-508-00 2 1/2" UL/ULc/FM

TrimFit® Model BFG (Grooved)
06-522-00 1 1/4" UL/ULc/FM
06-524-00 1 1/2" UL/ULc/FM
06-526-00 2" UL/ULc/FM
06-528-00 2 1/2" UL/ULc/FM

CA Bldg. Materials Listing #
7770-2164-0100



3198 LIONSHEAD AVE
CARLSBAD, CA 92010
+ 1 (760) 599-1168
+ 1 (800) 344-1822
+ 1 (800) 344-3775 FAX

© 2016 Fire Protection Products, Inc.

WWW.FPPI.COM

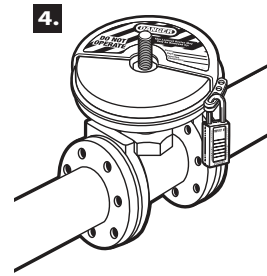
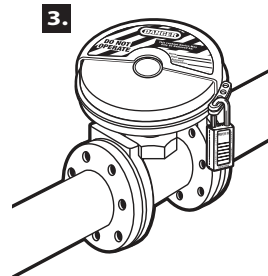
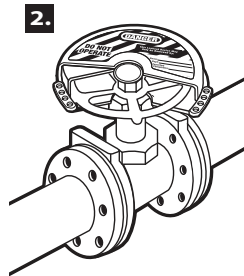


Valve Handle Lockout Covers

1.	Product Number Modèle n° Modelo Núm.	For Valve Handle Diameters Diamètre du volant de manœuvre Para diámetros de manija de válvula
	480	1 in.- 3 in. (25 mm - 76 mm)
	481	2 in.- 5 in. (51 mm - 12.7 cm)
	482	4 in.- 6.5 in. (10.2 cm - 16.5 cm)
	483	6 in.- 10 in. (15.2 cm - 25.4 cm)
	484	8 in.- 13 in. (20.3 cm - 33 cm)

Assembly Instructions

1. Select the properly-sized cover for the specific valve handle to be locked out. Note: Cover should be loose enough when applied that it does not bind to the valve handle.
2. Rotate the lockout cover to completely surround the valve handle (Illustration 2).
3. Secure with Master Lock safety lockout padlock(s) by inserting shackle(s) through the overlapping locking eyelets (Illustration 3).
4. To secure a valve handle which has a rising stem, cut out the circular center section of the lockout cover (Illustration 4).



One "Valve Handle Lockout Cover" or equivalent, shall be provided; to be used in accordance with NFPA 20, sections 4.17.1 (3) & 4.17.2.

**Master
Lock**

www.masterlocksafety.com • www.masterlock.com

© 2015 Master Lock Company LLC | All Rights Reserved

Master Lock Company LLC, Milwaukee, WI 53210 U.S.A. | 800-308-9244

Master Lock Canada Inc., Mississauga, Ontario L5L 5Z9 | (800) 227-9599 | Fax: (800) 229-0081

Master Lock Europe, 92200 Neuilly-sur-Seine, France, 00 33 1 41 43 72 00, E-mail: safety@master-lock.fr

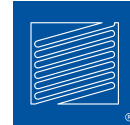
Master Lock Europe-UK Office, Wakes Colne, Colchester CO6 2DB, UK, 0044,1,787,222,027, E-mail: safetyeu@mlck.com

玛斯特锁贸易(上海)有限公司 上海市浦东新区银城中路168号上海银行大厦1006室 400-820-6535 E-mail:safetychina@mlck.com

Check Valves

UL LISTED AND FM APPROVED

WWW.FPPI.COM



3198 LIONSHEAD AVE
CARLSBAD, CA 92010
+ 1 (760) 599-1168
+ 1 (800) 344-1822
+ 1 (800) 344-3775 FAX

LISTED VALVE NOW
AVAILABLE IN
1½" SIZE



- Brass Body* (C38000) for superior corrosion resistance
- Listed valves available in the following sizes: 1 ½"**, 2", 2 ½", 3" and 4"
- Available Grooved, Threaded, or Thread by Groove reducing the need for additional fittings and minimizing installation time.
- Pressure rated to up to 300 PSI
- Tapped and plugged for easy use of accessories such as ball drips or gauges

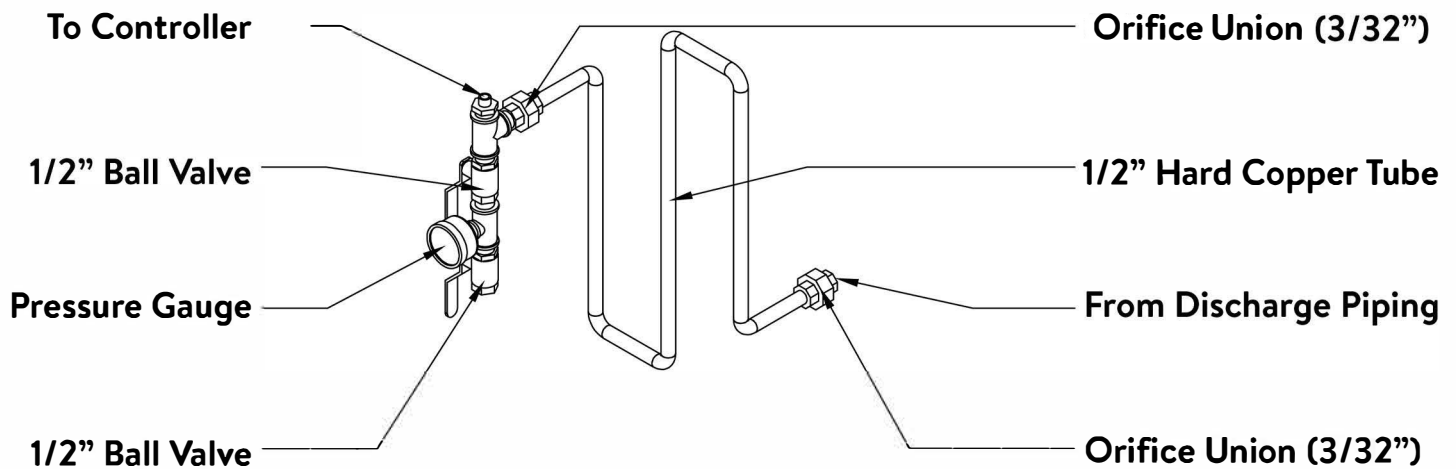


*Contains lead. Not for use in water systems intended for human consumption.

**1 ½" size is UL/ULC listed only

INSIST ON
FPPI®

NFPA20 Sensing Line Detail



Pressure Sensing Lines constructed in accordance with NFPA 20:
All brass or copper components, orifice unions at connections to
both discharge piping & controller valve assembly, minimum 60"
hard copper tubing between unions.