



13-ULV100-R

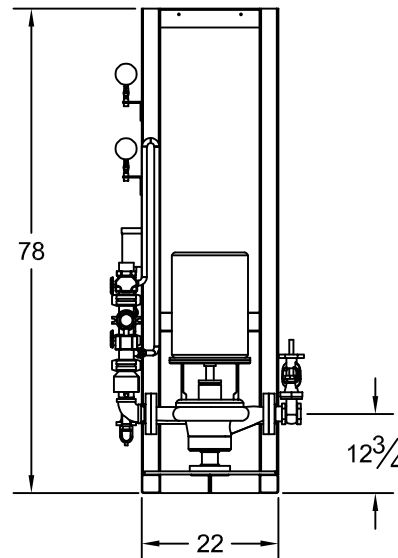
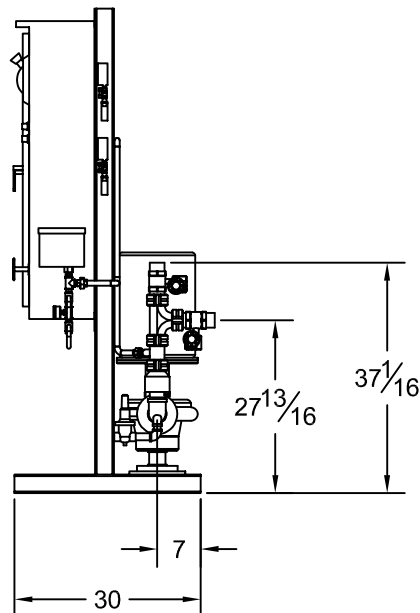
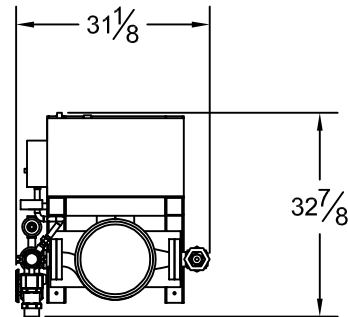
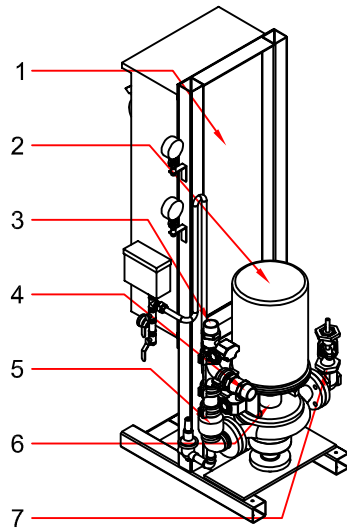
100GPM Fire Pump Package

Submittal Packet

NFPA13R Packaged Fire Pump System UL/FM Fire Pump

13-ULV100-R

Compact Residential Package
Design Condition: 100GPM @ 75PSI



System Specifications:

Motor

- 10 Horsepower Electric
- 230 Volt, 46 Amp
- Single Phase
- 3450 RPM

Pump

- UL/FM Vertical Inline Fire Pump
- 2" Suction (FNPT)
- 2" Discharge (Grooved)
- 175 PSI max working pressure

System Components (UL Listed by Manufacturer)

- 1- Limited Service Fire Pump Controller
- 2- Electric Motor (UL Recognized)
- 3- Discharge Butterfly Valve (Monitored)
- 4- Test Connection Butterfly Valve (Monitored)
- 5- Check Valve
- 6- Vertical Inline Fire Pump
- 7- Suction OS&Y (Monitored)

Dimensions

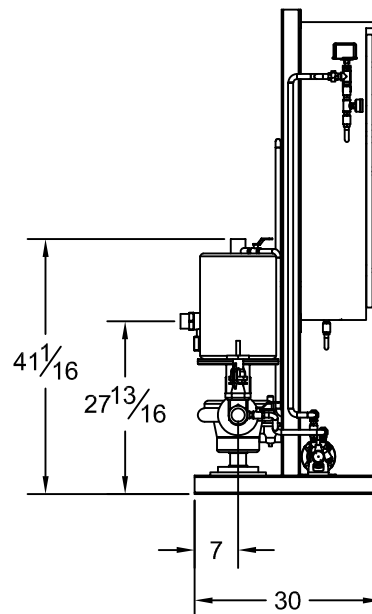
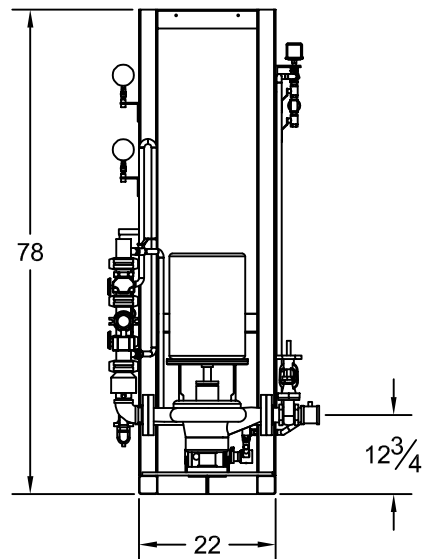
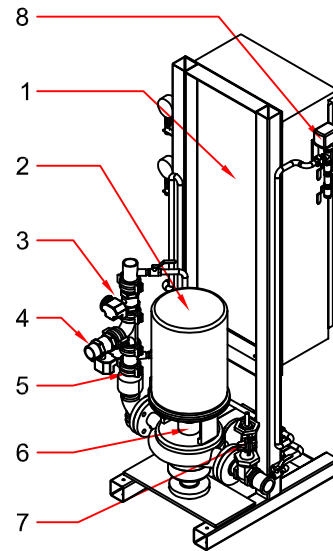
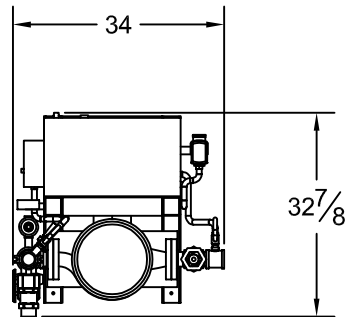
- 33" Depth
- 78" Height
- 32" Width

*All dimensions are approximate and subject to change without notice.

NFPA13R Packaged Fire Pump System UL/FM Fire Pump with Jockey Pump

13-ULV100

Compact Residential Package
Design Condition: 100GPM @ 75PSI



System Specifications:

Motor

- 10 Horsepower Electric
- 230 Volt, 46 Amp
- Single Phase
- 3450 RPM

Pump

- UL/FM Vertical Inline Fire Pump
- 2" Suction (FNPT)
- 2" Discharge (Grooved)
- 175 PSI max working pressure

System Components (UL Listed by Manufacturer)

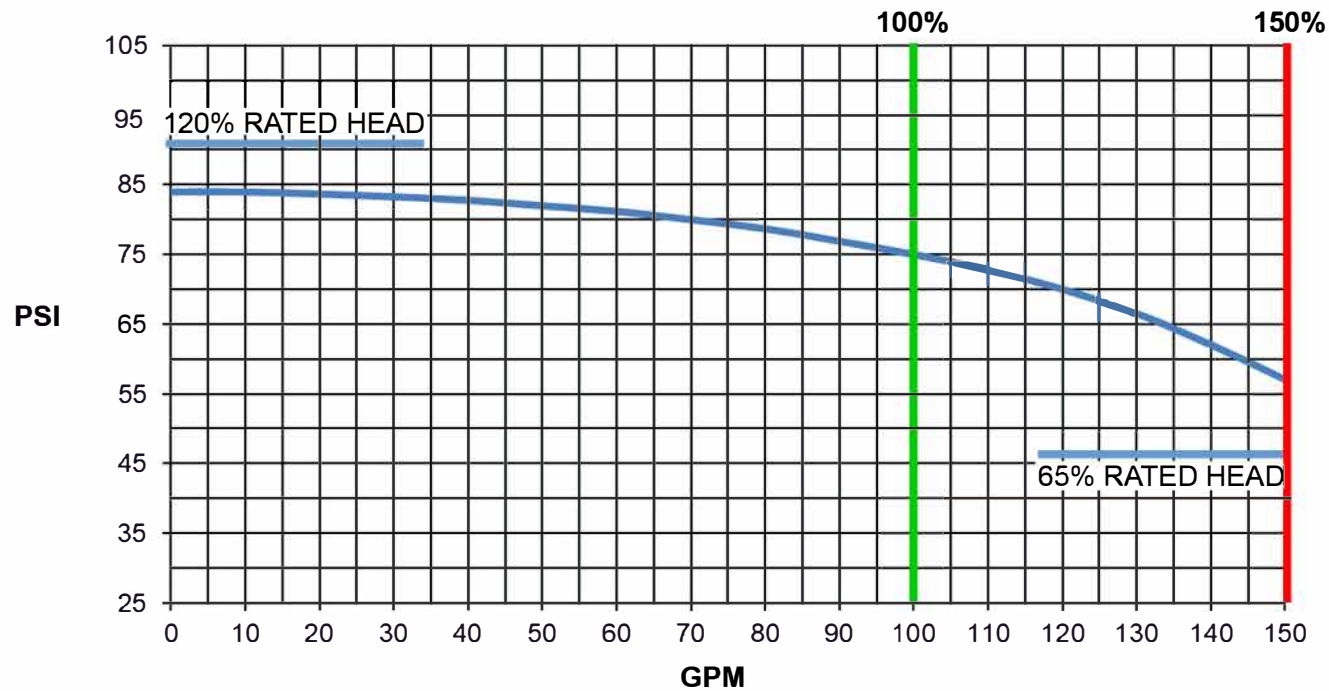
- 1- Limited Service Fire Pump Controller
- 2- Electric Motor (UL Recognized)
- 3- Discharge Butterfly Valve (Monitored)
- 4- Test Connection Butterfly Valve (Monitored)
- 5- Check Valve
- 6- Vertical Inline Fire Pump
- 7- Suction OS&Y (Monitored)
- 8- Pressure Switch (Jockey Control)

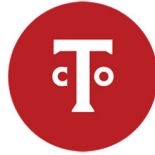
Dimensions

- 33" Depth
- 78" Height
- 34" Width

*All dimensions are approximate and subject to change without notice.

13-ULV100 100GPM @ 75PSI 10HP UL/FM VERTICAL INLINE FIRE PUMP





Fire Pump Controller

Eaton EPCT Fire

Touchscreen based electric fire pump controllers



Powering Business Worldwide

Product Description

The EPCT Fire features an advanced, 7" color touchscreen that incorporates both the fire pump controller (FPC) and automatic transfer switch (ATS) functionality into one, intuitive display.

Designed solely with the consumer in mind, the EPCT Fire enables technicians to commission the fire pump controller faster; troubleshooting is made easier and is more effective through the use on-screen history filtering and diagnostic monitoring.

All full-service fire pump controllers can be offered in either full-voltage or reduced voltages starting methods:

- FD/FT20 - Limited service
- FD/FT30 - Across-the-line
- FD/FT40 - Part winding
- FD/FT50 - Primary resistor
- FD/FT60 - Autotransformer
- FD/FT70 - WYE-Delta (Star-Delta) open transition
- FD/FT80 - WYE-Delta (Star-Delta) closed transition
- FD/FT90 - Soft start

Product Features

Touchscreen Display

General

Speed of commissioning, configuration and troubleshooting are more critical to businesses today more than ever. Through the use of a 7" touchscreen, users can easily program all site specific setpoints through an intuitive menu structure, view all critical system information, and troubleshoot quickly and accurately via on-screen diagnostics.

Automatic Transfer Switch Integration

Going away from the multiple screen approach, the EPCT Fire touchscreen integrates both the Fire Pump Controller and Automatic Transfer Switch into one display enabling the user to effectively manage programming and operation from one source.

Commissioning Simplified

The Startup tab features all controller related commissioning tasks such as: Quick Setup, Setup Phase Reversal, Flow Test, Manual/Automatic Starts, and Test Alarms.

UL Type Rating

The touchscreen display has been tested in accordance with UL and achieves a type 4X rating.

Programming Menu

Startup tab

This tab system enables the user to complete all controller related commissioning tasks. Each sub-menu within the Startup tab guides the user through step-by-step, intuitive screens to quickly and effectively complete the startup and commissioning process.

Panel Setup tab

All variables relating to the panel, such as language, date and time, nominal voltage, etc., are located in the Panel Setup tab. For all programming points within the Panel Setup tab, refer to the instruction manual: MN124016EN.

Help tab

The help tab provides end users service contact information from the company that commissioned the unit (if programmed), factory contact information, and a QR code to download the instruction manual onto a mobile device.

Pressure Settings tab

Contains a variety of pressure settings that may be programmed to suit site requirements. Some key settings include: Start Pressure, Stop Pressure, Low Pressure Alarm, High Pressure Alarm, Low Suction Shutdown, Low Foam Shutdown, Pressure Units, and the ability to calibrate the transducer.

Timer Values tab

This tab system contains the programming point for all fire pump controller related timers. These timers are: Minimum Run Time, Acceleration Time, Sequential Start Time, Fail to Start Time, Fail to Stop Time, and Weekly Motor Test Timer.

ATS Settings tab (if equipped)

The ATS Settings tab will only be enabled on units equipped with an automatic transfer switch. Programming points within this tab only pertain to the operation of the transfer switch.

Alarm Setpoints tab

There are seven (7) programmable alarm points within this tab system: Phase Reversal, Phase Failure Alarm Setpoint, Motor Overload Setpoint, Transducer Fail Pump Start, Abort Motor Test on Low Voltage, Voltage Alarm Settings, and Frequency Alarm Settings.

Inputs/Outputs tab

The I/O board is capable of accepting ten (10) custom inputs that can be programmed for seventeen (17) predefined conditions. The output relays can be programmed for sixty-one (61) separate conditions. Additional relays can be added through the use of a single or multiple optional relay boards.

History/Statistics/Diagnostics tab

This tab system allows the customer/technician to view historical data, controller statistics, controller diagnostics, and startup information. To assist, the controller can filter for specific events or between certain dates to speed up troubleshooting.

I/O Board

Power Supply

The redesigned I/O board is equipped with a full voltage power supply capable of accepting voltage inputs between 200-600VAC three phase, or 240VAC single phase.

Customer Input Connections

Connection terminals are provided at the top of the I/O board for external customer connections that can be programmed through the touchscreen display.

Output Relays

The I/O board features four (4), 250VAC, 8A, 2 Form-C relays designated for the following: Common Alarm, Power/Phase Failure, Phase Reversal, and Pump Run. Each relay socket has a surface mount LED to indicate the relay's coil status.

Optional Boards

The controller can accept up to four (4) additional option boards: optional relay board, MODBUS communication board, secondary 4-20mA device board, and an alarm board. The controller has provisions to allow future optional boards to be added with plug-and-play functionality.

Other Components

Drain Valve Solenoid

All full-service EPCT Fire controllers are equipped with a drain valve solenoid used for manual or automatic motor tests.

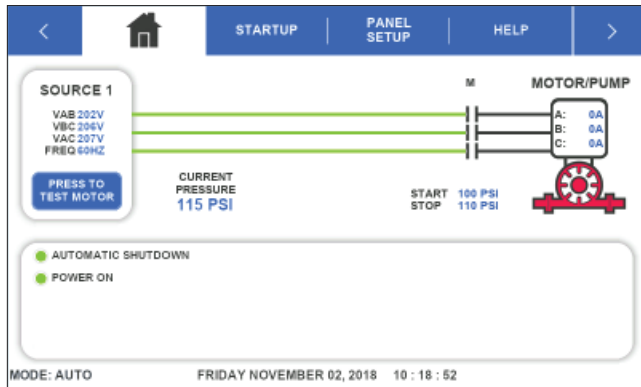
External USB Port

The USB port allows the user to download historical messages, statistics, diagnostic information, startup file, and current controller configuration to any USB device with FAT16 or FAT 32 formatting.

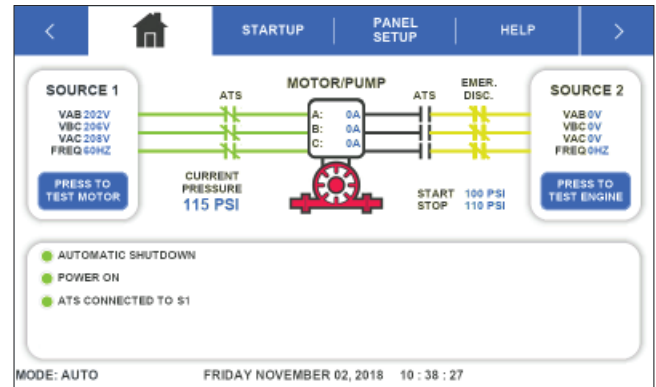
Enclosures

The EPCT Fire controllers come standard with UL type 2 (drip-proof) enclosures. Optional enclosures are available and include: type 3, 3R, 4, 4X, and 12.

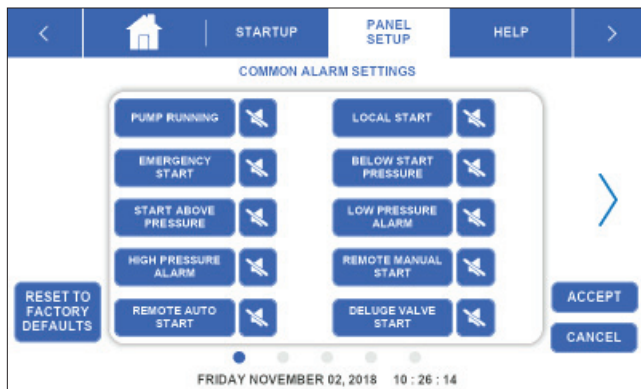
Display Screens



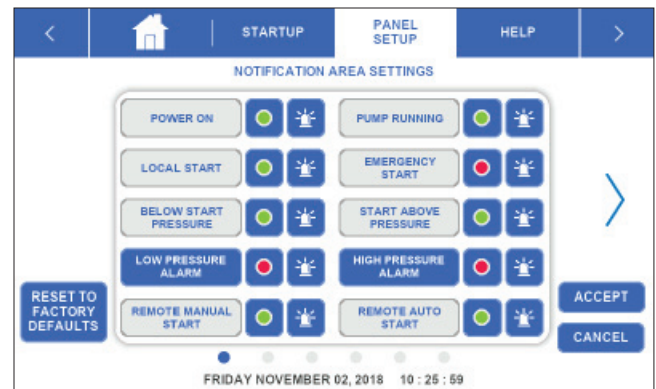
Home tab - without ATS



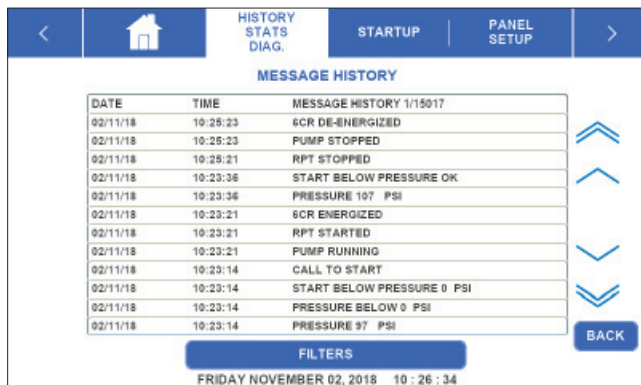
Home tab - with ATS



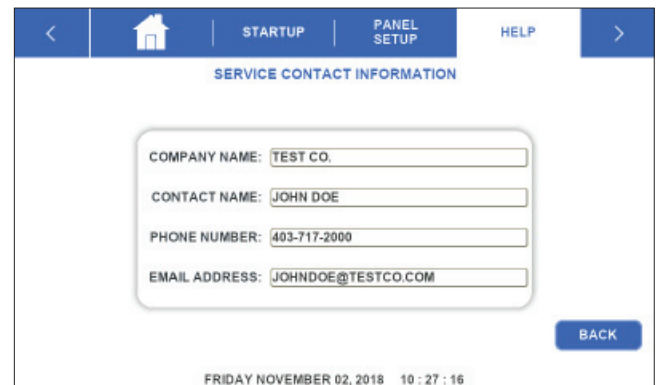
Common Alarm Settings



Notification Area Settings



Message History



Customer Service Contact

Emergency Start Operator

A mechanically operated emergency start handle (ESH) will mechanically activate the motor contactor(s) independently from any electrical control circuits.

Standards & Certifications

All EPCT Fire full-service, electric fire pump controllers meet or exceed the requirements of Underwriters Laboratories and Underwriters Laboratories Canada [UL218 and UL1008], Factory Mutual, the Canadian Standards Association, New York City building code, CE mark, U.B.C./C.B.C. seismic requirements, and are built to the latest edition of NFPA 20 standards. The EPCT Fire electric fire pump controllers are suitable for use as service entrance equipment - does not meet CEC requirements for Canada.

Quick Specification Overview

| Starting Conditions | | | | | Withstand Ratings | | |
|--|------------------|------------------|-----------------|-------------------|-------------------|-------|--------------------------------|
| Starting Method | Starting Voltage | Starting Current | Starting Torque | Motor Connections | Voltage | HP | Short Circuit Withstand Rating |
| FD/FT20 Limited Service | Full | 600% | 100% | 2 (SP) or 3 | 200-208V | 5-30 | 25,000 |
| | | | | | 220-240V | 5-30 | 25,000 |
| | | | | | 380-415V | 5-30 | 25,000 |
| | | | | | 440-480V | 5-30 | 25,000 |
| | | | | | 575-600V | 5-30 | 18,000 |
| | | | | | 240V (SP) | 5-15 | 10,000 |
| FD/FT30 Across-the-Line | Full | 600% | 100% | 3 | 200-208V | 5-150 | 100,000 |
| | | | | | 220-240V | 5-200 | 100,000 |
| | | | | | 380-415V | 5-300 | 100,000 |
| | | | | | 440-480V | 5-400 | 100,000 |
| | | | | | 575-600V | 5-500 | 25,000 |
| FD/FT40 Part Winding | Reduced | 65% | 50% | 6 | 200-208V | 5-250 | 100,000 |
| | | | | | 220-240V | 5-300 | 100,000 |
| | | | | | 380-415V | 5-500 | 100,000 |
| | | | | | 440-480V | 5-600 | 100,000 |
| | | | | | 575-600V | 5-700 | 25,000 |
| FD/FT50 Primary Resistor | Reduced | 50% | 42% | 3 | 200-208V | 5-150 | 100,000 |
| | | | | | 220-240V | 5-200 | 100,000 |
| | | | | | 380-415V | 5-300 | 100,000 |
| | | | | | 440-480V | 5-400 | 100,000 |
| | | | | | 575-600V | 5-500 | 25,000 |
| FD/FT60 Autotransformer | Reduced | 45% | 42% | 3 | 200-208V | 5-150 | 100,000 |
| | | | | | 220-240V | 5-200 | 100,000 |
| | | | | | 380-415V | 5-300 | 100,000 |
| | | | | | 440-480V | 5-400 | 100,000 |
| | | | | | 575-600V | 5-500 | 25,000 |
| FD/FT70 WYE-Delta (Star-Delta) Open Transition | Reduced | 33% | 33% | 6 | 200-208V | 5-250 | 100,000 |
| | | | | | 220-240V | 5-300 | 100,000 |
| | | | | | 380-415V | 5-500 | 100,000 |
| | | | | | 440-480V | 5-600 | 100,000 |
| | | | | | 575-600V | 5-700 | 25,000 |
| FD/FT80 WYE-Delta (Star- Delta) Closed Transition | Reduced | 33% | 33% | 6 | 200-208V | 5-250 | 100,000 |
| | | | | | 220-240V | 5-300 | 100,000 |
| | | | | | 380-415V | 5-500 | 100,000 |
| | | | | | 440-480V | 5-600 | 100,000 |
| | | | | | 575-600V | 5-700 | 25,000 |
| FD/FT90 Soft Start | Reduced | Adjustable | Adjustable | 3 | 200-208V | 5-150 | 100,000 |
| | | | | | 220-240V | 5-200 | 100,000 |
| | | | | | 380-415V | 5-300 | 100,000 |
| | | | | | 440-480V | 5-400 | 100,000 |
| | | | | | 575-600V | 5-500 | 25,000 |

Eaton
1000 Eaton Boulevard
Cleveland, OH 44122
United States
Eaton.com

Electrical Sector
Canadian Operations
5050 Mainway
Burlington, ON L7L 5Z1
Canada
EatonCanada.ca
CHFire.com

© 2018 Eaton
All Rights Reserved
Printed in Canada
Publication No. BR124053EN / 001
January 2018

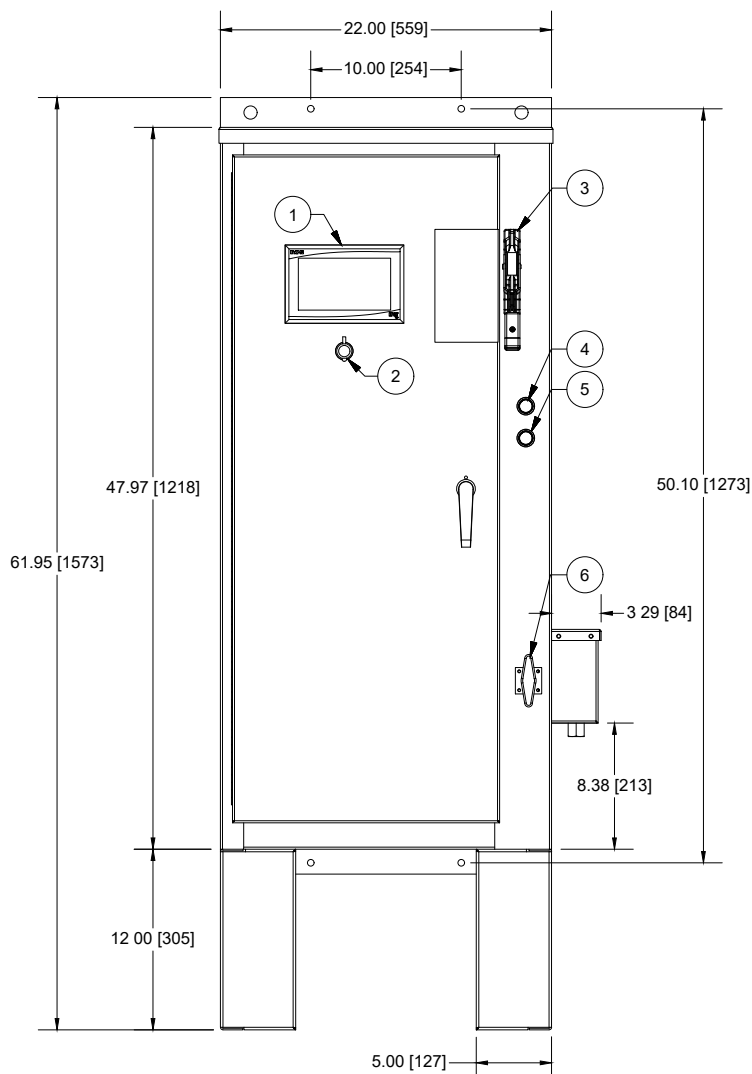
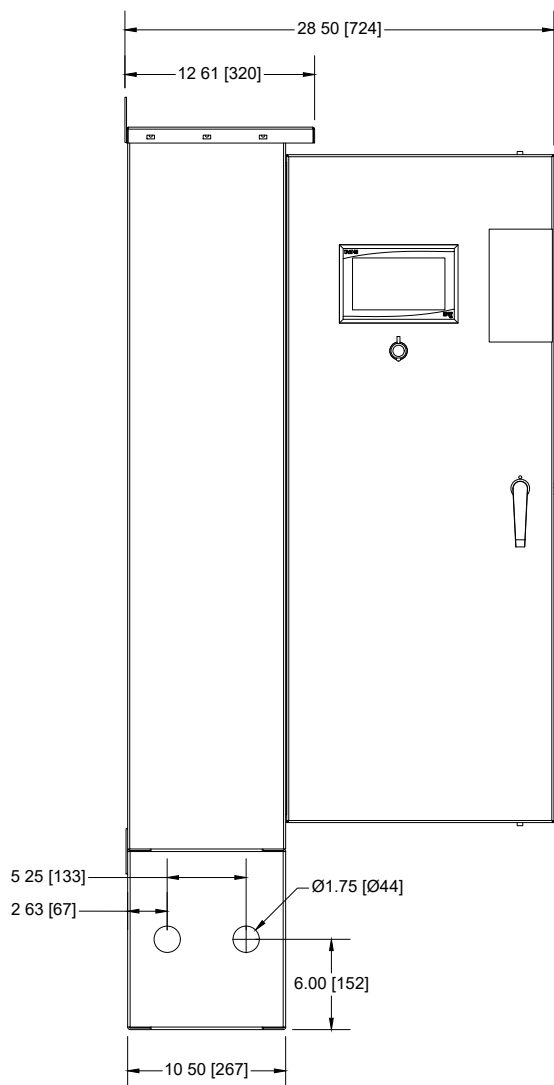
Eaton is a registered trademark.

All other trademarks are property
of their respective owners.

Follow us on social media to get the
latest product and support information.

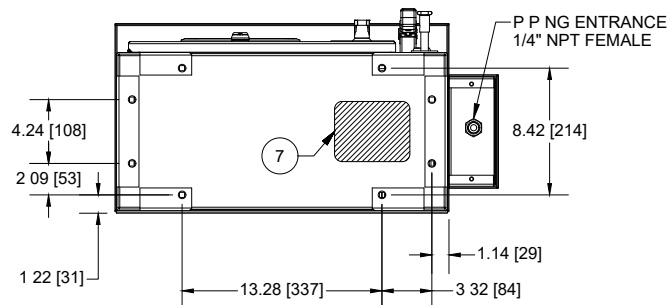


Powering Business Worldwide

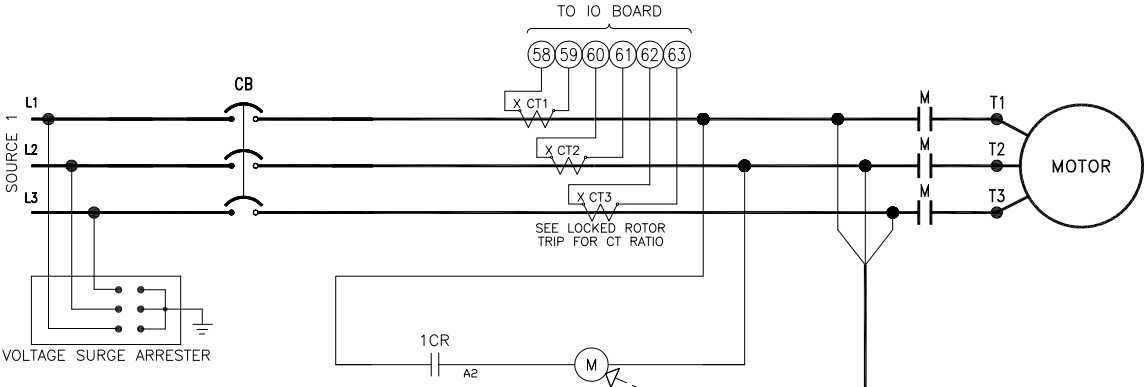


- 1 - EPCT TOUCHSCREEN
- 2 - EXTERNAL USB PORT
- 3 - MAIN POWER SWITCH
- 4 - START PUSHBUTTON
- 5 - STOP PUSHBUTTON
- 6 - MSH (EMERGENCY START HANDLE)
- 7 - RECOMMENDED CABLE ACCESS (BOTTOM ONLY)

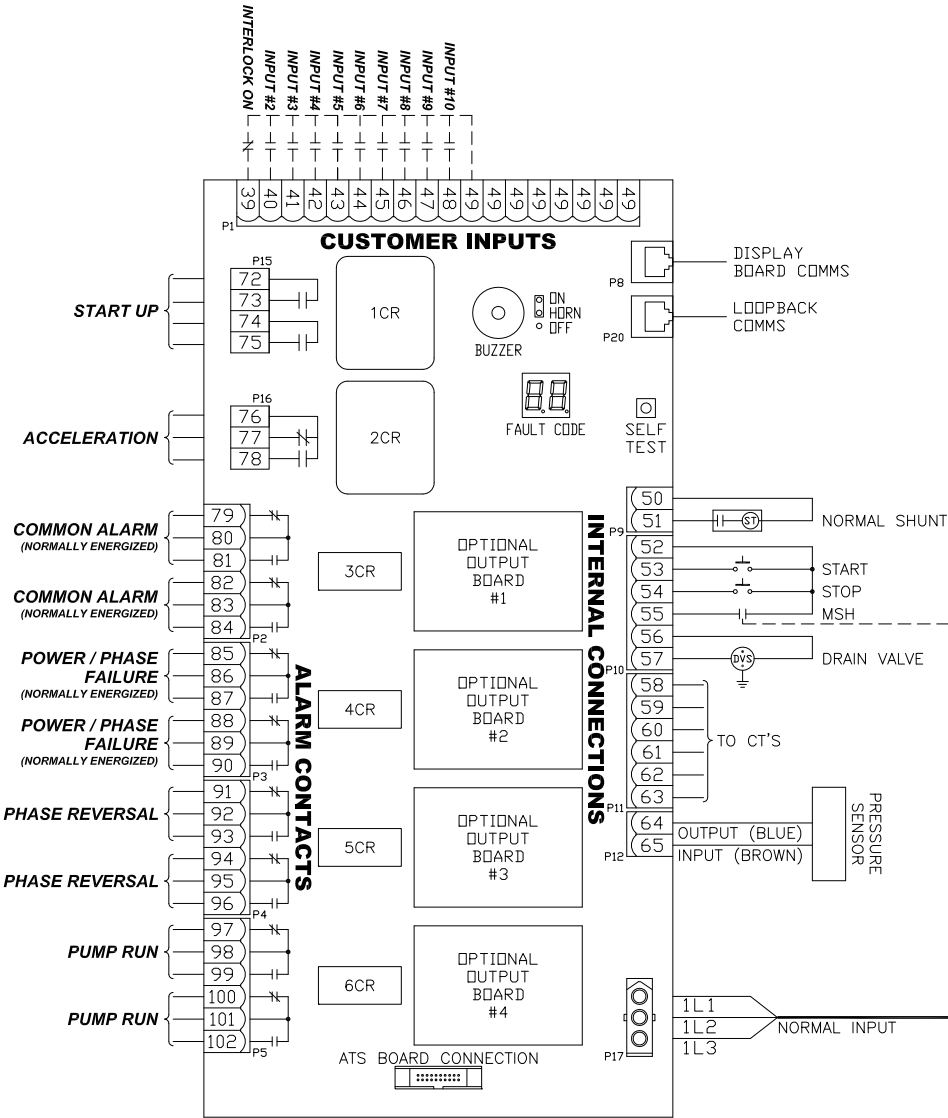
NOTES:
 1 - DIMENSIONS: in [mm]
 2 - ALL ENCLOSURES FINISHED IN RED
 3 - STANDARD ENCLOSURE: TYPE (NEMA) 2

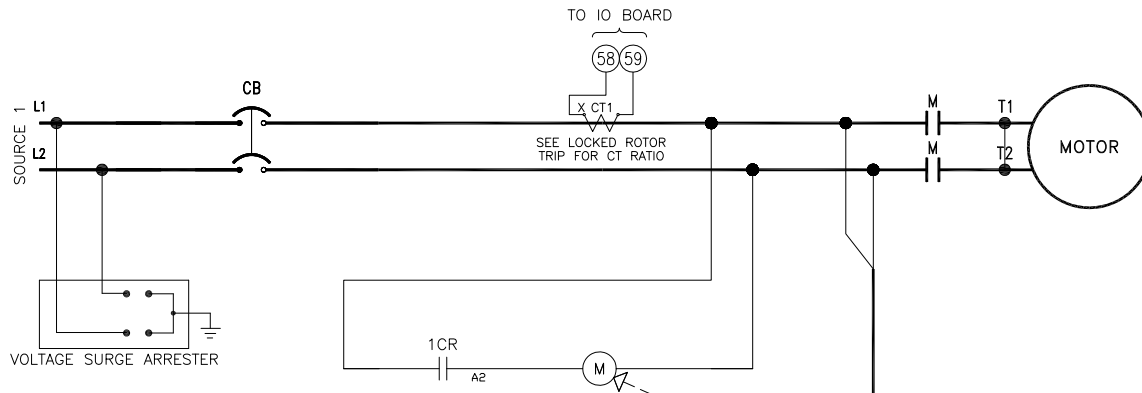


| Motor HP | Line voltage | Withstand rating | | Approximate weight Lbs. (Kg) |
|----------|--------------|------------------|--------------|---------------------------------|
| | | Standard | Intermediate | |
| 5 - 30 | 200 - 208V | 25,000 | 65,000 | 180 (81) |
| 5 - 30 | 220 - 240V | | | |
| 5 - 30 | 380 - 415V * | | | |
| 5 - 30 | 440 - 480V | | | |
| 5 - 30 | 550 - 600V | 18,000 | 25,000 | |
| 5 - 15 | 240V - S/P | 10,000 | 65,000 | |



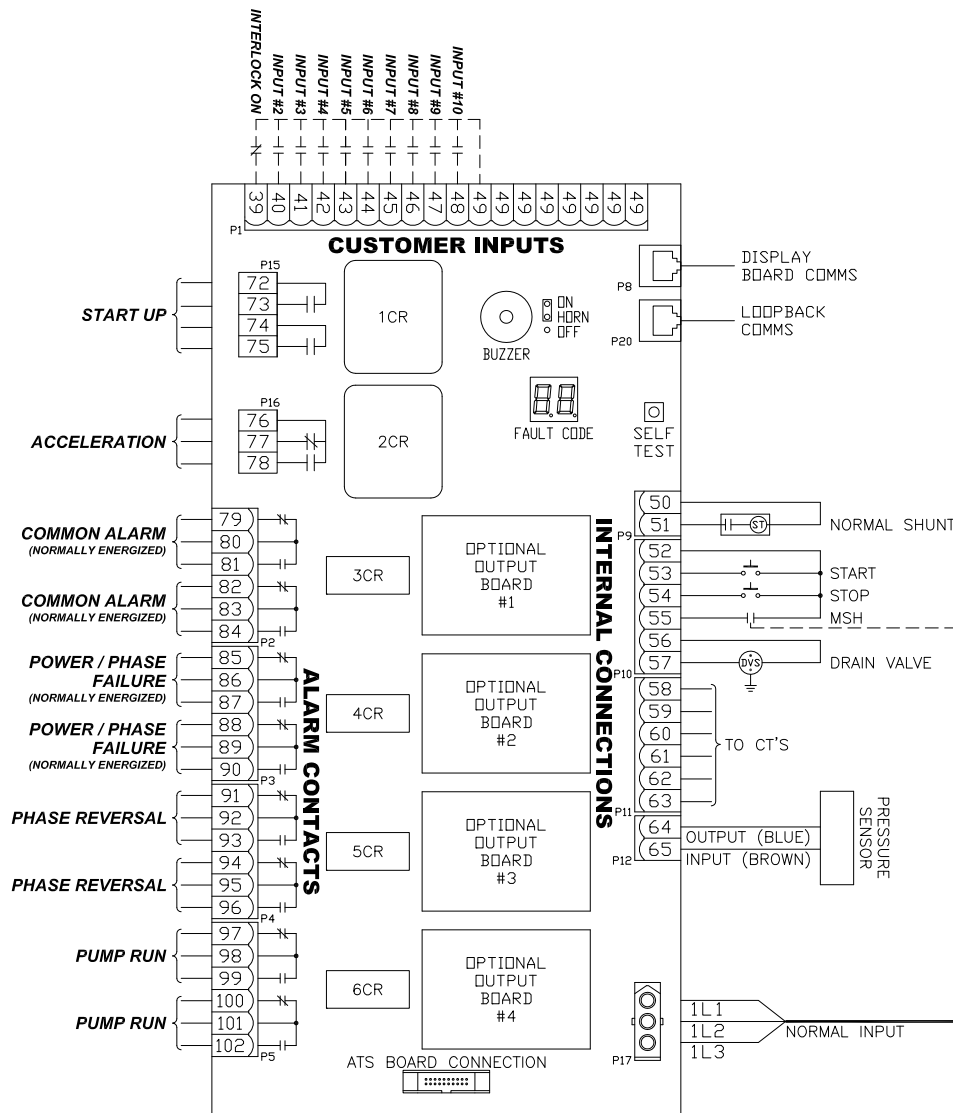
- NOTES:
- 1. POWER/PHASE FAILURE AND COMMON ALARM RELAYS ARE ENERGIZED UNDER NORMAL CONDITIONS.
 - 2. ALL RELAY CONTACTS ARE SHOWN IN NO POWER CONDITION.
- LEGEND:
- CB - CIRCUIT BREAKER
 - CT - CURRENT TRANSFORMER
 - M - RUN CONTACTOR
 - MSH - MANUAL START HANDLE (EMERGENCY) MICRO SWITCH





NOTES:
1. POWER/PHASE FAILURE AND COMMON ALARM RELAYS ARE ENERGIZED UNDER NORMAL CONDITIONS.
2. ALL RELAY CONTACTS ARE SHOWN IN NO POWER CONDITION.

LEGEND:
CB - CIRCUIT BREAKER
CT - CURRENT TRANSFORMER
M - RUN CONTACTOR
MSH - MANUAL START HANDLE (EMERGENCY) MICRO SWITCH



Line Voltage

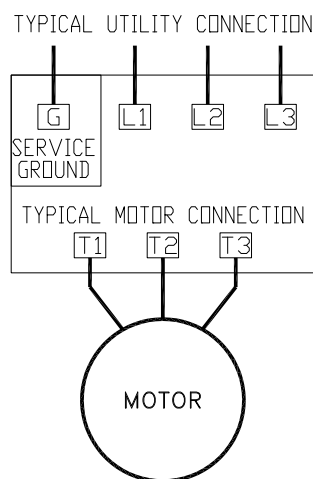
| | 200-208 | 220-240 | 380-415 | 440-480 | 575-600 | Line Lugs (QTY.) & Cable Size per Ø | Service Ground Lugs (QTY.) & Cable Size per Ø |
|---------------|---------|---------|---------|---------|---------|--|--|
| Max HP | 25 | 30 | 30 | 30 | 30 | (1) #14 - 1/0 (CU/AL) | (1) #14 - 2/0 (CU/AL) |
| | 30 | - | - | - | - | (1) #4 - 4/0 (CU) | (1) #14 - 2/0 (CU/AL) |

Line Voltage

| | 200-208 | 220-240 | 380-415 | 440-480 | 575-600 | Single Run Cable Sizes | Double Run Cable Sizes |
|--------|---------|---------|---------|---------|---------|------------------------|------------------------|
| Max HP | 10 | 10 | 15 | 20 | 25 | #14 - #8 (CU/AL) | #14 - #8 (CU/AL) |
| | 20 | 25 | 30 | 30 | 30 | #14 - #1 (CU/AL) | #14 - #2 (CU/AL) |
| | 30 | 30 | - | - | - | #8 - 3/0 (CU/AL) | #8 - 2/0 (CU/AL) |

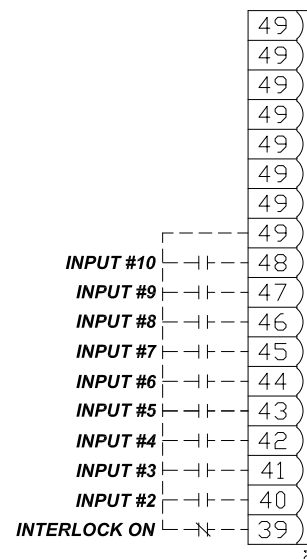
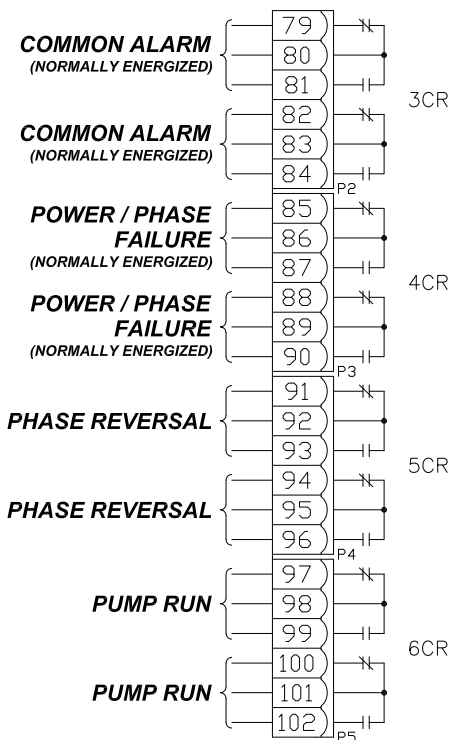
For proper cable size, refer to the National Electric Code (NEC - NFPA70)

CUSTOMER INPUTS

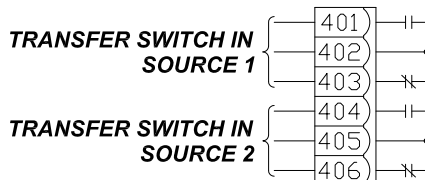
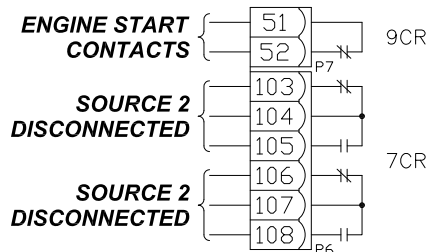


NOTES:

1. MOTOR CONNECTIONS VARY. REFER TO THE SPECIFIC MOTOR CONNECTION DIAGRAM.
2. OBSERVE PROPER PHASE ROTATION A-L1, B-L2, C-L3.
3. CABLE SIZE TO BE 125% OF FULL LOAD CURRENT. REFER TO NEC (NFPA 70)



TRANSFER SWITCH CONNECTIONS (IF EQUIPPED)



NOTES:

1. ENGINE START CONTACTS ARE TO BE CONNECTED TO THE REMOTE START CONTACTS ON THE GENERATOR/ENGINE.
2. CONTACTS SHOWN IN A DE-ENERGIZED, NEUTRAL POSITION

Line Terminals Connections

Line Voltage

| | 200-208 | 220-240 | 380-415 | 440-480 | 575-600 | Line Lugs (QTY.) & Cable Size per Ø | Service Ground Lugs (QTY.) & Cable Size per Ø |
|--------|---------|---------|---------|---------|---------|--|--|
| Max HP | - | 10 | - | - | - | (1) #14 - 1/0 (CU/AL) | (1) #14 - 2/0 (CU/AL) |
| | - | 15 | - | - | - | (1) #4 - 4/0 (CU) | (1) #14 - 2/0 (CU/AL) |

Load Terminals Connections

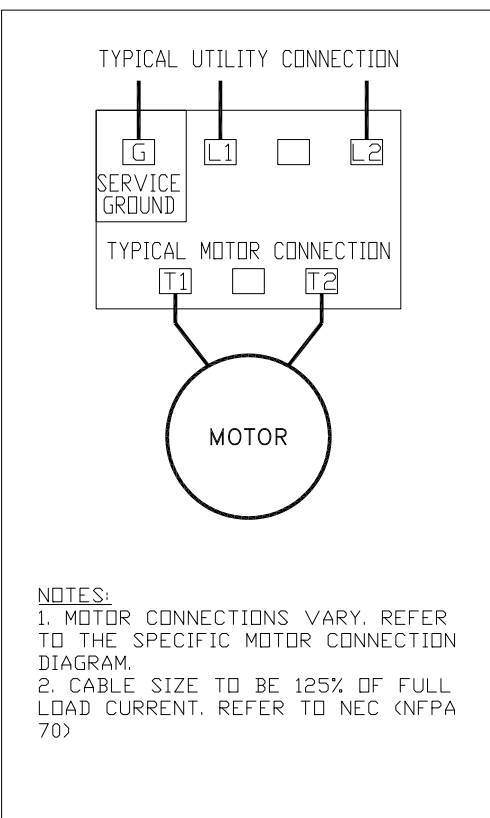
Line Voltage

| | 200-208 | 220-240 | 380-415 | 440-480 | 575-600 | Single Run Cable Sizes | Double Run Cable Sizes |
|--------|---------|---------|---------|---------|---------|------------------------|------------------------|
| Max HP | - | 5 | - | - | - | #14 - #8 (CU/AL) | #14 - #8 (CU/AL) |
| | - | 15 | - | - | - | #14 - #1 (CU/AL) | #14 - #2 (CU/AL) |

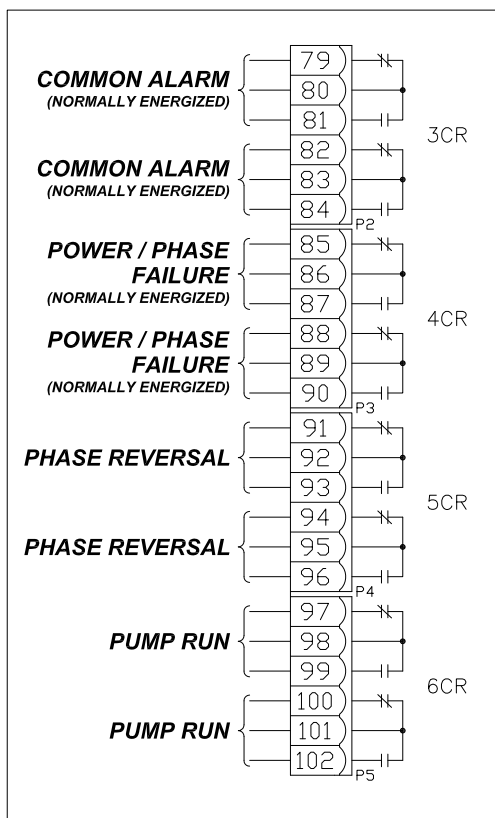
For ambient temperatures exceeding 30C (86F), the temperature rating of motor conductors is recommended to be a minimum of 90C (194F)

For proper cable size, refer to the National Electric Code (NEC - NFPA70)

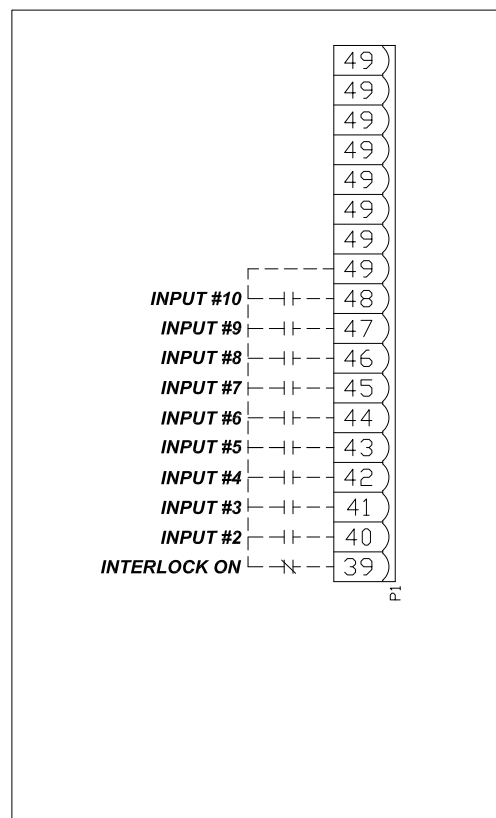
CONTROLLER CONNECTIONS



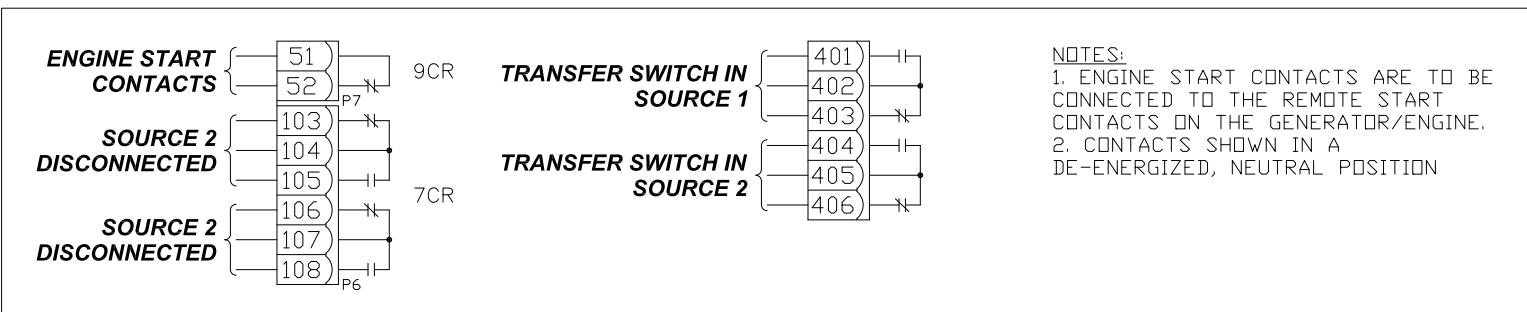
ALARM CONTACTS



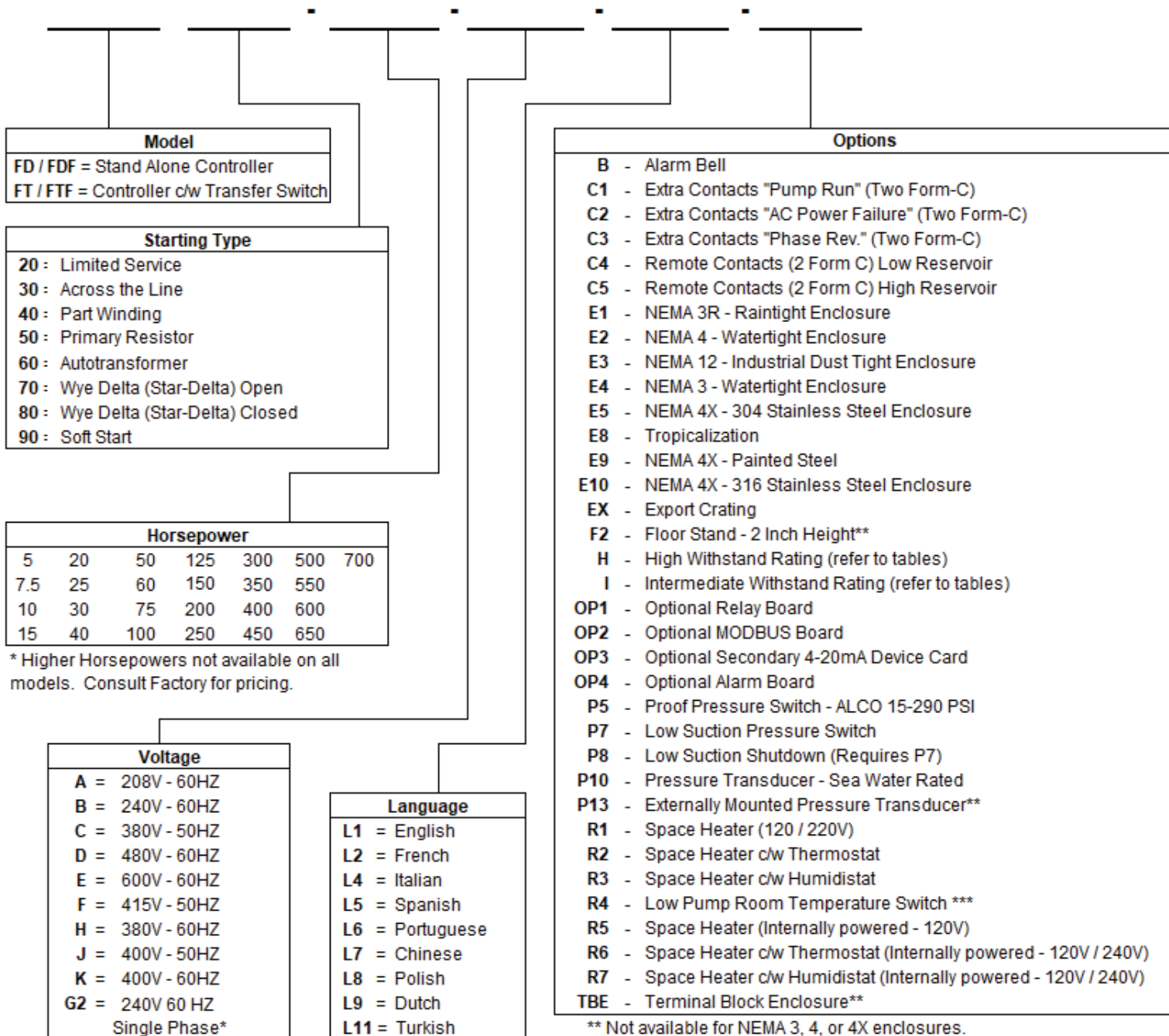
CUSTOMER INPUTS



TRANSFER SWITCH CONNECTIONS (IF EQUIPPED)



EPCT Fire option selection matrix



* Higher Horsepowers not available on all models. Consult Factory for pricing.

* Only available on Limited Service Controllers

** Not available for NEMA 3, 4, or 4X enclosures.

*** When ordered with a NEMA 3, 4, or 4X enclosure, the temperature switch is shipped loose with 20 feet of wire.

EPCT Fire electric fire pump controllers

Typical specifications

1. Approvals

- A. The Fire Pump Controller shall meet the requirements of the latest edition of NFPA 20 and shall be listed by [Underwriters Laboratories (UL)] and approved by [Factory Mutual Research (FM)] [Canadian Standards Association (CSA)] [New York Department of Buildings (NYSB)] and carry the CE marking for fire pump service.

2. Starting type

- A. The controller shall be of the combined manual and automatic type designed for [Full Voltage Starting] [Part Winding Starting] [Primary Resistor Starting] [Autotransformer Starting] [Wye-Delta (Star-Delta) Open Transition Starting] [Wye-Delta (Star-Delta) Closed Transition Starting] [Solid State Soft Start Starting]

3. Ratings

- A. The Controller shall have a withstand rating of 100,000 RMS symmetrical amperes @ [208V] [240V] [380V] [400V] [415V] [480V] [25,000 @ 600VAC].
- B. Temperature:
4 to +50 deg. C (39 to +122 deg. F)

4. Construction

- A. The controller shall include a motor rated combination isolating switch and circuit breaker, mechanically interlocked and operated with a single externally mounted handle.
- B. The isolating switch shall be rated to disconnect the motor load.
- C. The isolating switch/circuit breaker combination shall be mechanically interlocked such that the enclosure door cannot be opened when the handle is in the on position except by a tool operated defeater mechanism.
- D. The controller manufacturer shall manufacture the contactor, isolating switch, circuit breaker, pushbuttons, and enclosures. Brand-labeled components will not be accepted.

5. Enclosure

- A. The controller shall be housed in a Type 2 (IEC IP11) drip-proof, powder baked finish, freestanding enclosure.

B. Optional enclosures:

- 1. Type 3R (IEC IP14) rain-tight enclosure
- 2. Type 3 (IEC IP55) water-resistant enclosure
- 3. Type 4 (IEC IP66) watertight enclosure
- 4. Type 4X (IEC IP66) watertight 304 stainless steel enclosure
- 5. Type 4X (IEC IP66) watertight 316 stainless steel enclosure
- 6. Type 4X (IEC IP66) watertight corrosion resistant enclosure
- 7. Type 12 (IEC IP52) dust-tight enclosure

6. Microprocessor control

- A. The controller shall come complete with a 7", 800x480, color touchscreen. The touchscreen shall be type 4X rated.
 - 1. Home tab capable of displaying system pressure, three phase voltage and amperage readings for both sources, system frequency, date, and time, configurable notifications in the notification area, displaying current start and stop set points, and visual representation of the transfer switch position, source 2 disconnect handle, and contactor.
 - 2. Virtual buttons to manually test the pump motor and/or the backup power supply engine.
 - 3. Controller statistics screen, including:
 - A. Total Powered Time
 - B. Total Motor Run Time
 - C. Last Motor Run Time
 - D. Calls to Start
 - E. Motor Starts
 - F. Maximum Starting Current A
 - G. Maximum Starting Current B
 - H. Maximum Starting Current C
 - I. Maximum Run Current A
 - J. Maximum Run Current B
 - K. Maximum Run Current C
 - L. Last LR Current A
 - M. Last LR Current B
 - N. Last LR Current C
 - O. Minimum System Pressure
 - P. Maximum System Pressure
 - Q. Minimum S1 Voltage AB



Powering Business Worldwide

Fire pump controllers Features

- R. Minimum S1 Voltage BC
 - S. Minimum S1 Voltage CA
 - T. Maximum S1 Voltage AB
 - U. Maximum S1 Voltage BC
 - V. Maximum S1 Voltage CA
 - W. Minimum S2 Voltage AB
 - X. Minimum S2 Voltage BC
 - Y. Minimum S2 Voltage CA
 - Z. Maximum S2 Voltage AB
 - AA. Maximum S2 Voltage BC
 - AB. Maximum S2 Voltage CA
 - AC. Minimum S1 Frequency
 - AD. Maximum S1 Frequency
 - AE. Minimum S2 Frequency
 - AF. Maximum S2 Frequency
 - AG. Last System Startup
 - AH. Last Motor Start
 - AI. Last Low Pressure Start
 - AJ. Last Locked Rotor Trip
 - AK. Last S1 Phase Failure
 - AL. Last S2 Phase Failure
 - AM. Last S1 Phase Reversal
 - AN. Last S2 Phase Reversal
 - AO. Last S1 Undervoltage
 - AP. Last S1 Overvoltage
 - AQ. Last S2 Undervoltage
 - AR. Last S2 Overvoltage
 - AS. Last S1 Under Frequency
 - AT. Last S1 Over Frequency
 - AU. Last S2 Under Frequency
 - AV. Last S2 Over Frequency
 - AW. Last Generator Start
 - AX. Last Generator Stop
 - AY. Last transfer to S1
 - AZ. Last transfer to S2
 - BA. Last S2 Disconnect
4. Controller diagnostics screen, including:
- A. Controller Serial Number
 - B. Logic Board Firmware Version
 - C. I/O Board Firmware Version
 - D. I/O Board Supply Voltage
 - E. I/O Board Communication
 - F. CT1 Secondary Amperage
 - G. CT2 Secondary Amperage
 - H. CT3 Secondary Amperage
 - I. Transducer Input Voltage
 - J. Transducer Output Current
 - K. Transducer Setpoint Current 2
 - L. Transducer Setpoint Current 1
- M. All Input Status (Open or Closed) (Can be selected to override for one minute and manually change the state of the input)
 - N. All Output Relay Status (Energized or De-energized) (Can be selected to override for one minute and manually energize or de-energize the relay)
 - O. Test the display board's communication.
5. Archive message screen that will display up to 65,000 alarms/messages stored in the controllers' memory
- B. The microprocessor logic board shall be available with a USB port for transference of message history, controller status, diagnostics, startup and statistic files and the ability to update firmware.
 - C. A Fail-to-Start alarm shall occur if the motor controller sees less than 20% of the motor full load amps after an adjustable time delay of 1-99 seconds.
 - D. Locked rotor protection shall be provided. After a trip condition and restoration of power, the display shall indicate the voltage, current, and date and time at the moment that the controller tripped.
 - E. A sequential start timer and weekly test timer shall be provided as standard.
 - F. A restart time delay of one (1) second shall be provided to allow the residual voltage of the motor to decay prior to re-starting the motor. In the event that the pump motor continues to run after a request to stop, then the controller must display a fail to stop message to indicate this condition.
 - G. Overvoltage (0-100%) and undervoltage (0-100%) sensing and alarming shall be provided as standard.
 - H. The controller shall be supplied with interlock and shutdown circuits as standard. A green LED in the notification area shall indicate an interlock on condition.
 - I. Where shutdown of the pump(s) due to low suction pressure is required, it shall be accomplished without the addition of a separate panel or enclosure. The display shall indicate low suction shutdown. Resetting of the condition shall be automatic or manual as selected by the user.
7. Programming Menu
- A. The programming menu shall have the ability to enable an entry password.
 - B. The controller shall have nine (9) languages as a standard: English, French, Spanish, Portuguese, Turkish, Italian, Dutch, Chinese, and Polish.
 - C. The programming menu shall be grouped into ten (10) tabs as follows:
 - 1. Home
 - 2. Startup
 - 3. Panel Setup
 - 4. Help
 - 5. Pressure Settings
 - 6. Timer Values

- 7. ATS Settings
- 8. Alarm Setpoints
- 9. Inputs/Outputs
- 10. History/Statistics/Diagnostics

8. Pressure sensor

- A. A solid-state 4-20mA pressure sensor shall be provided. The pressure Start and Stop points shall be adjustable in increments of one (1) PSI.

9. Custom inputs/outputs

- A. The controller shall come standard with ten (10) programmable inputs, four (4) programmed outputs with the ability to add up to another sixteen (16) outputs via optional relay boards.
- B. The user shall be able to program the inputs/outputs through the main programming menu.
- C. The inputs shall be selectable based on the following criteria:
 - 1. User selected message or seventeen (17) predetermined messages
 - 2. Link to a future relay and/or LED indicator
 - 3. Alarm latched until reset
 - 4. Normally open or closed input
 - 5. On and/or off-delay timer
- D. The future relays shall be selectable based on the following criteria:
 - 1. Output based on a minimum of sixty-one (61) predetermined alarms, controller status or a custom input
 - 2. Latched until reset
 - 3. Energized under normal conditions
 - 4. On and/or off delay timer on the output

10. Alarm relays

- A. All relays shall be soldered on the PCB. An LED on the relay panel shall indicate the energized state of the relay. All relay contacts shall be rated @ 8A, 277VAC/30VDC. Two (2) sets of Form-C contacts shall be provided for each of the following:
 - 1. Common Alarm
 - 2. Power/Phase Failure
 - 3. Phase Reversal
 - 4. Pump Run
- B. The Common Alarm and Power/Phase Failure relays shall be energized under normal conditions.

11. Audible alarm buzzer

An audible alarm buzzer, capable of being heard

while the motor is operating, shall operate if Fail to Start, Hardware Malfunction or any Common Alarm condition exists.

12. Manufacturer

- A. The controller shall be of the EPCT Fire type as manufactured by Eaton Corporation.

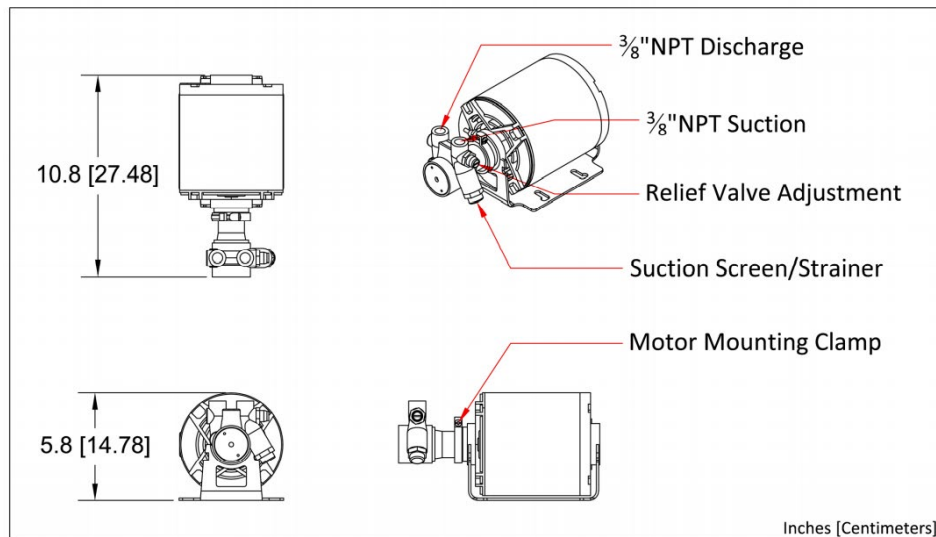


Jockey Pump

(Optional Equipment)

Talco ULV Jockey Pump

- High Quality Rotary Vane Pump
 - 1.8GPM @ 240PSI
- 1/3HP 200V-240V Electric Motor
 - Resilient Mounted
 - Permanently Lubricated
- Integrated Recirculation Relief Valve
 - Factory Set to 170PSI
 - No External Discharge
- Removable Mesh Suction Strainer
 - Cleanable & Reusable



503-688-1231 www.talcofire.com 6040 NE 112th Ave, Portland OR

TALCO
— FIRE SYSTEMS —

Commercial Pressure Switches

Electromechanical Square D Brand 9013

For power circuits, FRG, FHG, and G

Environmental characteristics

| Pressure switch type | | FRG | FHG | G |
|---------------------------|----------|---|-----|-----------------------------|
| Conformity to standards | | UL 508, NEC Article 430-84, ANSI /NSF Standard 61, FDA 21 CFR.2600 | | |
| Product Certifications | | UL File E12158 CCN NKPZ , CSA File LR 25490 Class 321106 | | |
| Protective treatment | | N/A | | |
| Ambient air temperature | °C | For operation, 0 °C (32 °F) min to 125 °C (257 °F) max For storage, -30 °C (-22 °F) min to 70 °C (158 °F) max | | |
| Fluids controlled | | Fresh water, or sea water (with Form Q) | | |
| Materials | | Cover: polypropylene, Noryl® thermoplastic resin or equivalent for Type 3R, Component material in contact with fluid: flange, zinc plated or equivalent (fluid entry), nitrile or equivalent rubber (diaphragm) | | |
| Operating position | | NEMA Type 1, and Type IP20 in any position, NEMA Type 3R in the vertical position only | | |
| Vibration resistance | | — | | |
| Shock resistance | | — | | |
| Electric shock protection | | — | | |
| Degree of protection | | NEMA Type 1, IP20 and NEMA Type 3R (some references) must be mounted in vertical position to maintain enclosure rating | | |
| Operating rate | cycles/m | 10 | | |
| Repeat accuracy | | +/- 3 % of the range | | |
| Fluid connection | | 1/8" NPSF internal, 1/4" NPSF internal, 1/2"NPT External, 1/4" Bayonet (barbed), 90 deg. Elbow 1/4" Bayonet, Four Way Flange, 3/8" NPSF (Internal), 1/4" Flare, other specials | | |
| Electrical connection | | 2 open side entries, 3/4" diameter, with two flats | | 3 Conduit 1/2" Knockouts |

Contact block characteristics

| | | |
|-----------------------------|--------|---|
| Type of contacts | | One 2 pole, 2 N/C (4 terminal) contacts, snap action |
| Resistance across terminals | m Ω | < 25 |
| Terminal referencing | | N/A |
| Short-circuit protection | A | 5,000 |
| Connection | | Screw clamp terminals. Clamping capacity up to #10 AWG (5.261 mm ²) |
| Electrical durability | cycles | 100,000 |
| Mechanical durability | cycles | 300,000 |

Electrical Ratings

| 1 Pole | | FRG | | | FHG ▲ ■ | | | G | | |
|------------------------------------|-------------|-------------------|-------------------|---------------------|--------------------|-------------------|---------------------|-------------------|------------------|---------------------|
| Power ratings of controlled motors | Voltage | ~ 1-phase | ~ 3-phase | — | ~ 1-phase | ~ 3-phase | — | ~ 1-phase | ~ 3-phase | — |
| | 32 V | — | — | — | — | — | — | — | — | — |
| | 115 V | 0.75 kW (1 HP) | — | 0.18 kW (.25 HP) | 1.1 kW (1.5 HP) | 1.5 kW (2 HP) | 0.18 kW (.25 HP) | 0.75 kW (1 HP) | — | 0.37 kW (.50 HP) |
| | 230 V | 0.75 kW (1 HP) | — | 0.18 kW (.25 HP) | 1.5 kW (2 HP) | 2.2 kW (3 HP) | 0.18 kW (.25 HP) | 1.5 kW (2 HP) | — | 0.37 kW (.50 HP) |
| | 460 / 575 V | — | — | — | — | 0.75 kW (1 HP) | — | 1.5 kW (2 HP) | — | — |
| 2 Pole | | ~ 1-phase | ~ 3-phase | — | ~ 1-phase | ~ 3-phase | — | ~ 1-phase | ~ 3-phase | — |
| Power ratings of controlled motors | Voltage | ~ 1-phase | ~ 3-phase | — | ~ 1-phase | ~ 3-phase | — | ~ 1-phase | ~ 3-phase | — |
| | 32 V | — | — | 0.18 kW (.25 HP) | — | — | — | — | — | — |
| | 115 V | 0.75 kW (1 HP) | 0.75 kW (1 HP) | 0.18 kW (.25 HP) | 1.5 kW (2 HP) | 2.2 kW (3 HP) | 0.37 kW (.50 HP) | 1.5 kW (2 HP) | 2.2 kW (3 HP) | 0.75 kW (1 HP) |
| | 230 V | 0.75 kW (1 HP) | 0.75 kW (1 HP) | 0.18 kW (.25 HP) | 2.2 kW (3 HP) | 3.7 kW (5 HP) | 0.37 kW (.50 HP) | 2.2 kW (3 HP) | 3.7 kW (5 HP) | 0.75 kW (1 HP) |
| | 460 / 575 V | — | — | — | — | 0.75 kW (1 HP) | — | 3.7 kW (5 HP) | 3.7 kW (5 HP) | — |

Note:
Type FRG and G are all Form H

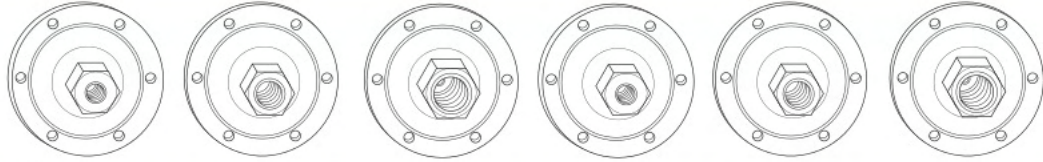
▲ Includes
FHG 2, 3, 4, 9, 12, 13, 14, 19, 42, 44, 49

■ Includes
FHG 22, 24, 29, 32, 33, 34, 39, 52, 54, 59

Commercial Pressure Switches

Electromechanical Square D Brand 9013
For power circuits G
2-pole 2 N/C contacts
Degree of protection IP20, NEMA Type 1, 7 & 9

Flange Style



Adjustable range of switching point
Contacts open on rising pressure
2 Pole

| Fluid connections | 1/8" NPSF internal | 1/4" NPSF internal | 3/8" NPSF internal | 1/8" NPSF internal | 1/4" NPSF internal | 3/8" NPSF internal |
|--|-----------------------------|-----------------------------|-----------------------------|--------------------|--------------------|--------------------|
| References | | | | | | |
| NEMA Type 1, IP20 | 9013GHG1 | 9013GHG2 | 9013GHG3 | | | |
| NEMA Type 7, NEMA Type 9 | | | | 9013GHR1 | 9013GHR2 | 9013GHR3 |
| Fluids / Pressure controlled | Water or Air | Water or Air | Water or Air | Water or Air | Water or Air | Water or Air |
| Pressure range | | | | | | |
| Cut-Out PSIG (bar) | 60-200 | 60-200 | 60-200 | 65-200 | 65-200 | 65-200 |
| Cut-In PSIG (bar) | 40-170 | 40-170 | 40-170 | 35-150 | 35-150 | 35-150 |
| Weight lbs (kg) | 2 lbs (0.91) | 2 lbs (0.91) | 2 lbs (0.91) | 8 lbs (3.62) | 8 lbs (3.62) | 8 lbs (3.62) |
| Complementary characteristics not shown under general characteristics | | | | | | |
| Differential PSIG (bar) | 20-40 (1.4-2.8) | 20-40 (1.4-2.8) | 20-40 (1.4-2.8) | 30-50 (2.1-3.5) | 30-50 (2.1-3.5) | 30-50 (2.1-3.5) |
| Maximum permissible pressure PSIG (bar) | 80 (5.5) | 80 (5.5) | 80 (5.5) | 80 (5.5) | 80 (5.5) | 200 (13.8) |
| Mechanical life | 300, 000 operating cycles | | | | | |
| Cable entry | 3 Conduit 1/2" Knockouts | 3 Conduit 1/2" Knockouts | 3 Conduit 1/2" Knockouts | 2 3/4"-14 NPT | 2 3/4"-14 NPT | 2 3/4"-14 NPT |
| Pressure switch type | Diaphragm | | | | | |

Ordering Information

Pressure Codes

Below is the pressure code table.
Existence of a code does not imply that the code is available for any or all devices.

| Settings | Code |
|---------------------------|------|
| 20-40 PSI | J20 |
| 30-50 PSI | J21 |
| 40-20 PSI | J23 |
| 40-60 PSI | J24 |
| 60-80 PSI | J25 |
| 70-90 PSI | J26 |
| 70-100 PSI | J28 |
| 75-100 PSI | J29 |
| 80-100 PSI | J30 |
| 90-120 PSI | J31 |
| 100-80 PSI | J51 |
| 100-125 PSI | J53 |
| 110-125 PSI | J54 |
| 110-150 PSI | J56 |
| 120-150 PSI | J57 |
| 125-150 PSI | J58 |
| 125-175 PSI | J60 |
| 130-175 PSI | J61 |
| 140-170 PSI | J66 |
| 140-175 PSI | J62 |
| 145-175 PSI | J63 |
| 150-120 PSI | J64 |
| 150-175 PSI | J67 |
| 215-250 PSI | J65 |
| Specify pressure settings | J99 |

- 1 Specify Class 9013 Type G.
- 2 Select pressure code and add code designation to end of type number. Be sure that pressure code falls within the limits of the device as shown in the device listings.
- 3 If special features are desired, add the appropriate Form letter to the Class and Type. Arrange Form letters in alphabetical sequence when ordering more than one special feature.
- 4 Place packaging code at end of sequence with other forms when ordering. If no packaging code is indicated, devices will be shipped individually packaged.
For standard pack of 10 devices per box C10
Available on GHG, GHG, GSB, and GSG

See page 25 for Form C10.

TALCO FIRE
SYSTEMS



RESIDENTIAL & COMMERCIAL FIRE PUMP SPECIALISTS

6040 NE 112TH AVE. PORTLAND, OREGON 97220

PHONE: 800-878-8055 WWW.TALCOFIRE.COM

Valves & Fittings

Fire Main Gate Valve

INSIST ON
FPPI

OS&Y Valves (Outside Stem & Yoke), RS

Description

FPPI OS&Y Valves feature a bronze* body (ASTM C83600) cast iron hand wheel, with steel, stainless steel, and brass components for extended service life. OS&Y valves (outside stem and yoke) are perfect for sprinkler system monitoring. When the valve is opened, the stem is visible above the hand wheel. In the closed position, the stem is concealed inside the valve body. This allows for immediately identifying if the valve is "OPEN" or "CLOSED". OS&Y valves can also be fitted with external tamper switches for central station or panel monitoring.



Installation

Install in accordance with customary installation practices.

Specifications

Material:

Body: Bronze* ASTM C83600
Bonnet: Bronze* ASTM C83600
Stem: Brass*
Hand Wheel: Cast Iron
Packing Gland: Bronze* ASTM C83600
Disc: Bronze* ASTM C83600
Disc Pin: SS-304
Gland Packing: Graphite
Stud: Steel
Yoke Bushing: Brass*
Set Screw: Steel

Item Numbers / Sizes:

06-702-00 1" IPS
06-704-00 1 1/4" IPS
06-706-00 1 1/2" IPS
06-708-00 2" IPS

Finish:

Body: Rough Brass*
Handwheel: Red

*Contains lead. Not for use in water systems intended for human consumption.



3198 LIONSHEAD AVE
CARLSBAD, CA 92010
+ 1 (760) 599-1168
+ 1 (800) 344-1822
+ 1 (800) 344-3775 FAX

© 2016 Fire Protection Products, Inc.



WWW.FPPI.COM

TrimFit® Bronze Butterfly Valve

INSIST ON
F P P I®

Installation Instructions

Description

TrimFit® Model BFT (Threaded Butterfly Valve) and Model BFG (Grooved Butterfly Valve) close slowly to prevent water hammer. The butterfly valves are designed to be installed in any orientation and monitored to signal if the valve is opened or closed. They are Listed and Approved for use in a fire sprinkler system.



Installation

1. The valve can be installed in any orientation in a piping system with standard ASME B1.20.1 NPT or standard roll or cut grooved pipe.
2. When threading to pipe, apply PipeFit® or equivalent thread sealant or tape.
3. Use a wrench to cramp on the hexagon end of the valve.
4. The tamper switch features two switches: Switch-1 has dual leads on the terminals. This switch is used for connection of the supervisory circuit of a listed fire alarm control panel. Switch-2 has a single lead. This switch is used for connection of auxiliary equipment.
5. All the unused wires need to be capped with lead nuts and tucked into a junction box.
6. All connections need to be reviewed and approved by the appropriate jurisdictional authorities.

7. A No. 14 green wire is fixed inside the switch housing. It is provided as a ground for the housing.
8. The valves are intended for use with ANSI B36.10 Schedule 40 and/or Schedule 80 pipes, sizes 1", 1-¼", 1-½", 2" and 2-½".

NOTE: ALL REPLACEMENT PARTS MUST BE OBTAINED FROM THE MANUFACTURER TO ASSURE PROPER OPERATION OF THE VALVE, AND TO MAINTAIN APPROVAL OF THE DEVICE.

The information contained herein is produced in good faith and is believed to be reliable but is provided for guidance and information purposes only. FPPI and its agents cannot assume liability or responsibility for results obtained in the use or misuse of its product by persons whose methods and qualifications are outside and beyond our control. It is the user's responsibility to determine the suitability of, methods of use, preparation prior to use, and appropriate installation for all products purchased from FPPI. It is the user's sole responsibility to observe and adapt such precautions as may be advisable or necessary for the protection of personnel and property in the handling and use of any of our products.

Specifications

Rated to 300 PSI

Switch rating:

10.1Amps/125/250VAC-60Hz

Actual switch application rating:

10 Amps/115 VAC-60Hz

0.5 Amps/28 VDC

Indoor/Outdoor Use

Materials

Body: Bronze ASTM 584
C83600

Disc: SS304

Handwheel: ASTM A216 WCB

Seat: ASTM D2000 Viton

Indicator: Powder Metal

Housing/Cover: Forged Brass
JIS C3771 (Ref. ASTM C37700)

Available Sizes

TrimFit® Model BFT (Threaded)

06-500-00 1" UL/FM

06-502-00 1¼" UL/ULc/FM

06-504-00 1½" UL/ULc/FM

06-506-00 2" UL/ULc/FM

06-508-00 2½" UL/ULc/FM

TrimFit® Model BFG (Grooved)

06-522-00 1¼" UL/ULc/FM

06-524-00 1½" UL/ULc/FM

06-526-00 2" UL/ULc/FM

06-528-00 2½" UL/ULc/FM

CA Bldg. Materials Listing #
7770-2164-0100



3198 LIONSHEAD AVE
CARLSBAD, CA 92010
+ 1 (760) 599-1168
+ 1 (800) 344-1822
+ 1 (800) 344-3775 FAX

© 2016 Fire Protection Products, Inc.

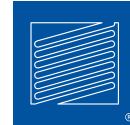
WWW.FPPI.COM



Check Valves

UL LISTED AND FM APPROVED

WWW.FPPI.COM



3198 LIONSHEAD AVE
CARLSBAD, CA 92010
+ 1 (760) 599-1168
+ 1 (800) 344-1822
+ 1 (800) 344-3775 FAX

LISTED VALVE NOW
AVAILABLE IN
1½" SIZE



- Brass Body* (C38000) for superior corrosion resistance
- Listed valves available in the following sizes: 1 ½"**, 2", 2 ½", 3" and 4"
- Available Grooved, Threaded, or Thread by Groove reducing the need for additional fittings and minimizing installation time.
- Pressure rated to up to 300 PSI
- Tapped and plugged for easy use of accessories such as ball drips or gauges



*Contains lead. Not for use in water systems intended for human consumption.

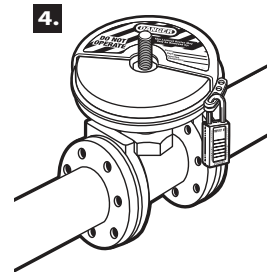
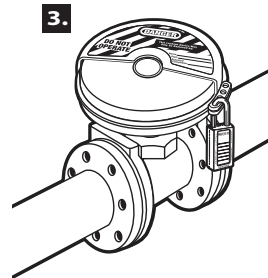
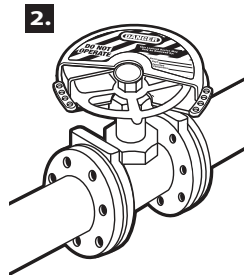
**1 ½" size is UL/ULC listed only

Valve Handle Lockout Covers

| 1. | Product Number Modèle n° Modelo Núm. | For Valve Handle Diameters Diamètre du volant de manœuvre Para diámetros de manija de válvula |
|----|--|---|
| | 480 | 1 in.- 3 in. (25 mm - 76 mm) |
| | 481 | 2 in.- 5 in. (51 mm - 12.7 cm) |
| | 482 | 4 in.- 6.5 in. (10.2 cm - 16.5 cm) |
| | 483 | 6 in.- 10 in. (15.2 cm - 25.4 cm) |
| | 484 | 8 in.- 13 in. (20.3 cm - 33 cm) |

Assembly Instructions

1. Select the properly-sized cover for the specific valve handle to be locked out. Note: Cover should be loose enough when applied that it does not bind to the valve handle.
2. Rotate the lockout cover to completely surround the valve handle (Illustration 2).
3. Secure with Master Lock safety lockout padlock(s) by inserting shackle(s) through the overlapping locking eyelets (Illustration 3).
4. To secure a valve handle which has a rising stem, cut out the circular center section of the lockout cover (Illustration 4).



One "Valve Handle Lockout Cover" or equivalent, shall be provided; to be used in accordance with NFPA 20, sections 4.17.1 (3) & 4.17.2.

**Master
Lock**

www.masterlocksafety.com • www.masterlock.com

© 2015 Master Lock Company LLC | All Rights Reserved

Master Lock Company LLC, Milwaukee, WI 53210 U.S.A. | 800-308-9244

Master Lock Canada Inc., Mississauga, Ontario L5L 5Z9 | (800) 227-9599 | Fax: (800) 229-0081

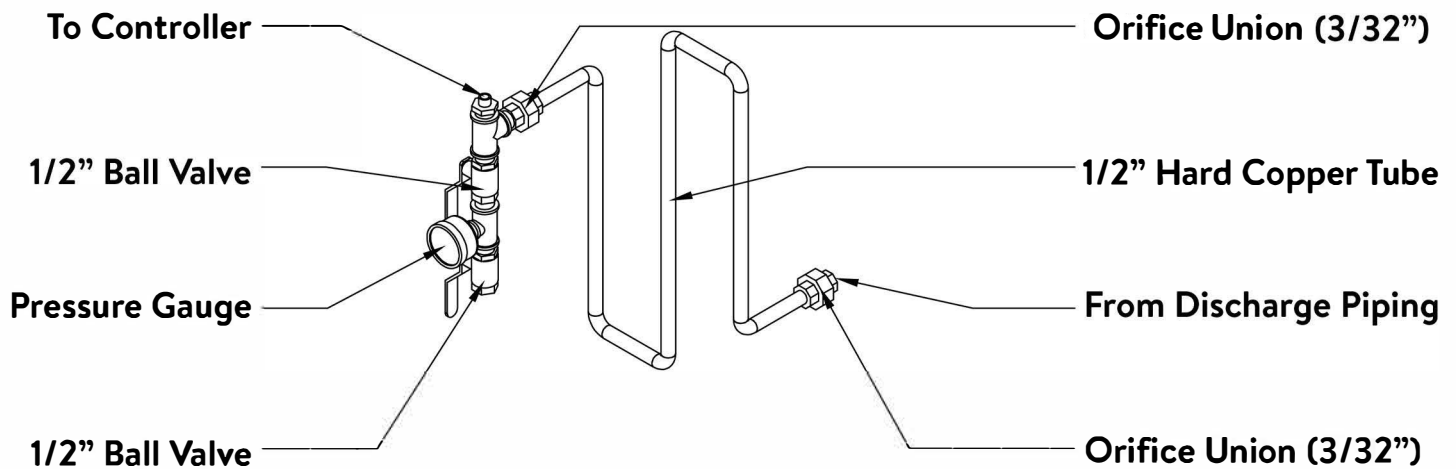
Master Lock Europe, 92200 Neuilly-sur-Seine, France, 00 33 1 41 43 72 00, E-mail: safety@master-lock.fr

Master Lock Europe-UK Office, Wakes Colne, Colchester CO6 2DB, UK, 0044,1,787,222,027, E-mail: safetyeu@mlck.com

玛斯特锁贸易(上海)有限公司 上海市浦东新区银城中路168号上海银行大厦1006室 400-820-6535 E-mail:safetychina@mlck.com



NFPA20 Sensing Line Detail



Pressure Sensing Lines constructed in accordance with NFPA 20:
All brass or copper components, orifice unions at connections to
both discharge piping & controller valve assembly, minimum 60"
hard copper tubing between unions.