

# ULR-200

w/Flow Meter, Jockey Pump  
Listed Fire Pump & Controller  
NFPA-20 Compliant Packaged System

# 200GPM

3 x 3 - 9A

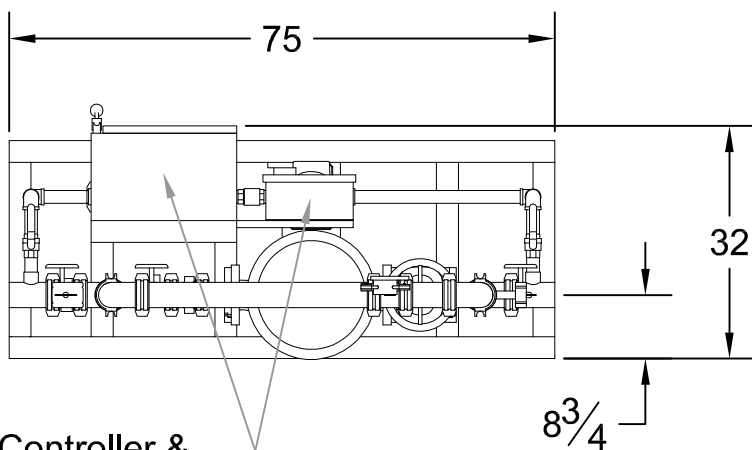
Controller: \_\_\_\_\_

Jockey Pump: \_\_\_\_\_

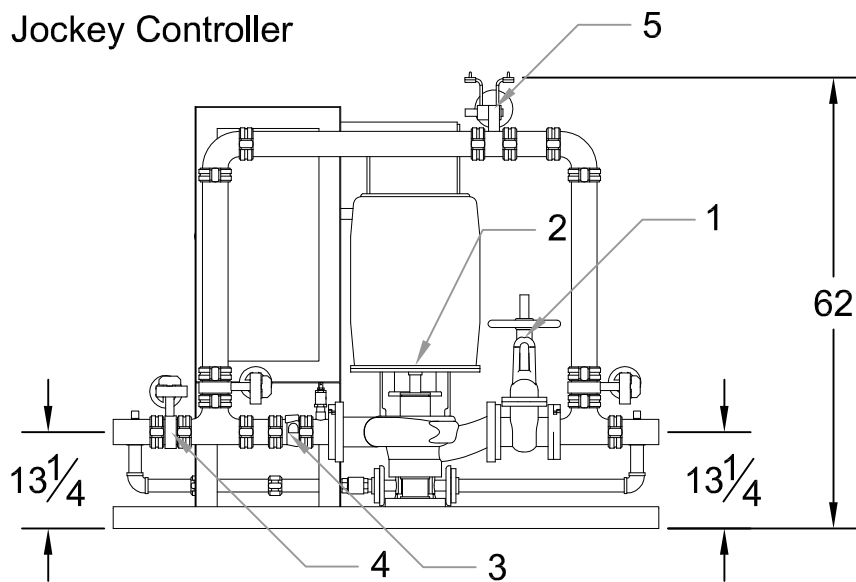
Jockey Controller: \_\_\_\_\_

Suction x Discharge: 3" x 3" Grooved Fittings

| PSI (range) | Motor HP |
|-------------|----------|
| 55-75       | 15       |
| 76-100      | 20       |
| 101-115     | 25       |
| 116-125     | 30       |
| 126-155     | 40       |
| 156-159     | 50       |



Main Controller & Jockey Controller



DESIGN CONDITIONS  
 \_\_\_\_\_ GPM @ \_\_\_\_\_ PSI  
 \_\_\_\_\_ HP \_\_\_\_\_ V \_\_\_\_\_ Phase

Project: \_\_\_\_\_  
 Contractor: \_\_\_\_\_  
 Date: \_\_\_\_\_ P.O.: \_\_\_\_\_

| System Components |                     |
|-------------------|---------------------|
| 1                 | OS&Y Gate Valve     |
| 2                 | Inline Pump & Motor |
| 3                 | Check Valve         |
| 4                 | Monitored Butterfly |
| 5                 | Flow Meter          |

Approximate ship weight: < 1200#